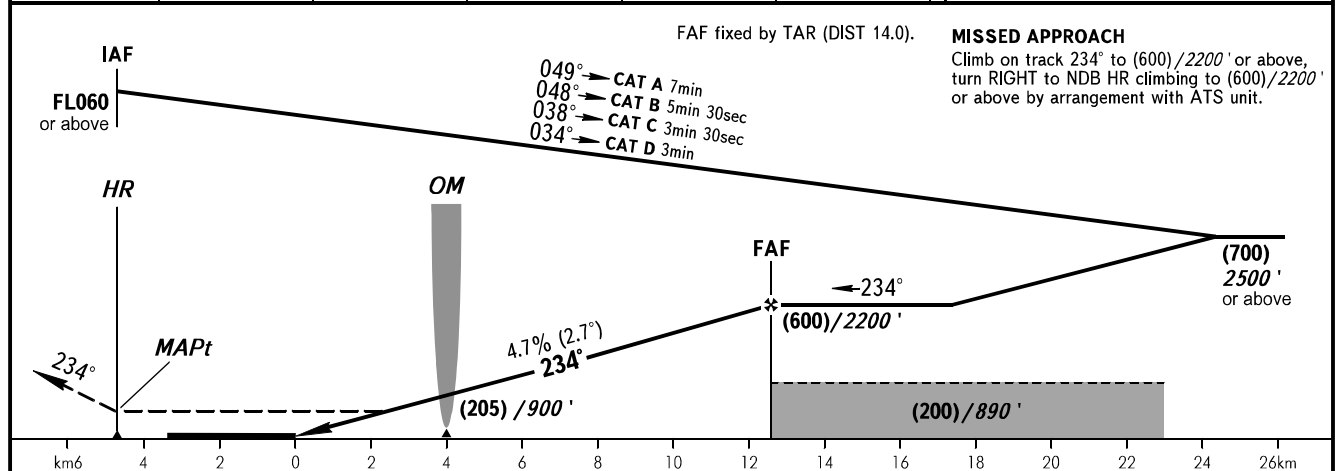
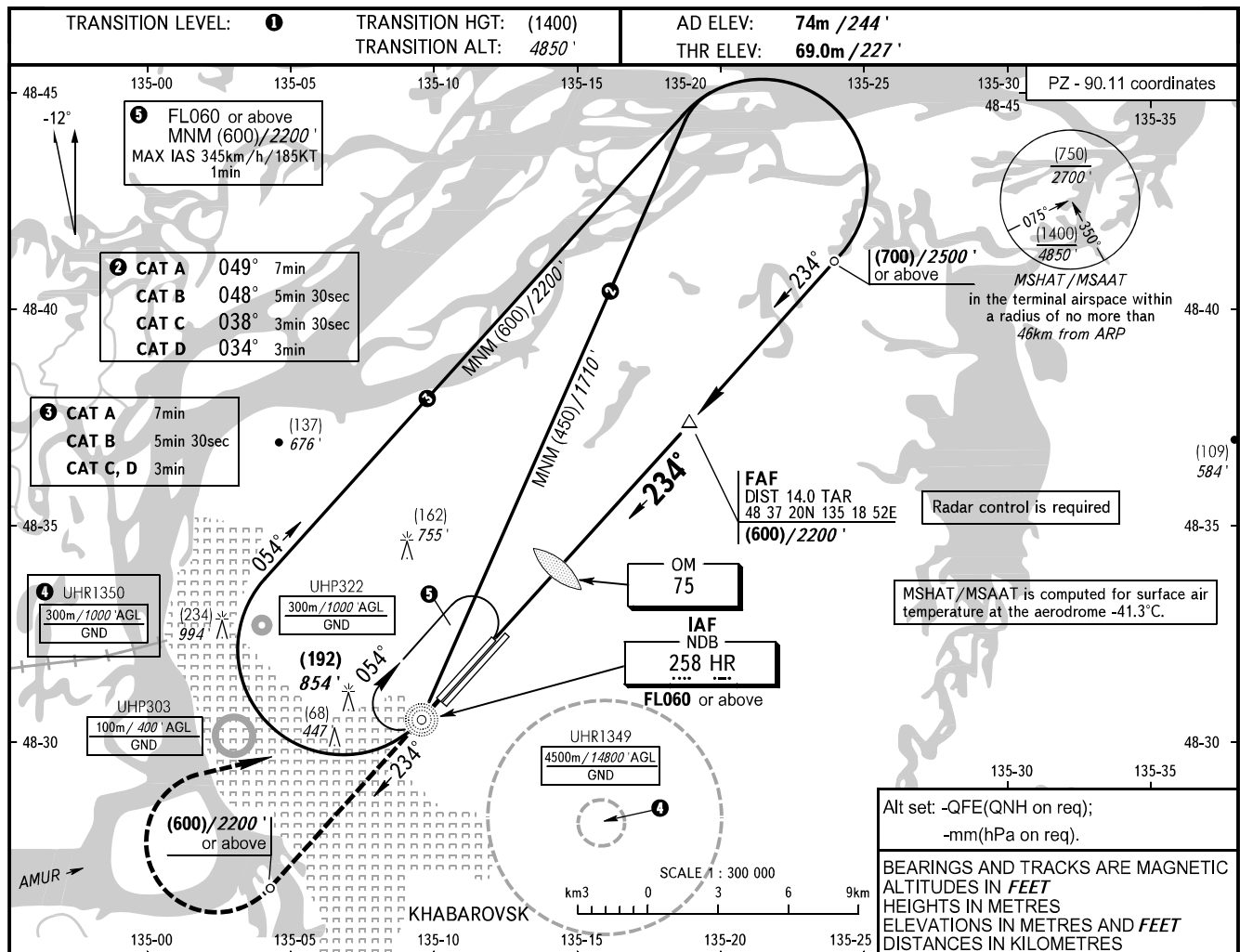


INSTRUMENT
APPROACH
CHART - ICAO

APPROACH	125.200
RADAR	120.300
PRECISION	119.300
GROUND	121.800 By ATC

KHABAROVSK, RUSSIA
NOVY
NDB X RWY 23R



OCA(H)		A	B	C	D	1 TRANSITION LEVEL: - FL060 when QFE is 753mm mercury column (1004 hPa) or above; - FL070 when QFE is less than 753mm mercury column (1004 hPa). WARNING: 1. Turn before MAPt is PROHIBITED. 2. MAPt at NDB HR. Timing not authorized for defining MAPt. 3. Visual manoeuvring is PROHIBITED.									
Straight-in		270(200) 890'	270(200) 890'	270(200) 890'	270(200) 890'										
Approach						CHANGE: COM, MSHAT/MSAAT									
GROUND SPEED	km/h	150	180	210	240						270	300	330	360	390
	kt	81	97	113	130						146	162	178	194	211
RATE OF DESCENT	m/s	2.0	2.4	2.7	3.1	3.5	3.9	4.3	4.7	5.1					
	ft/min	385	463	540	617	694	771	848	925	1002					