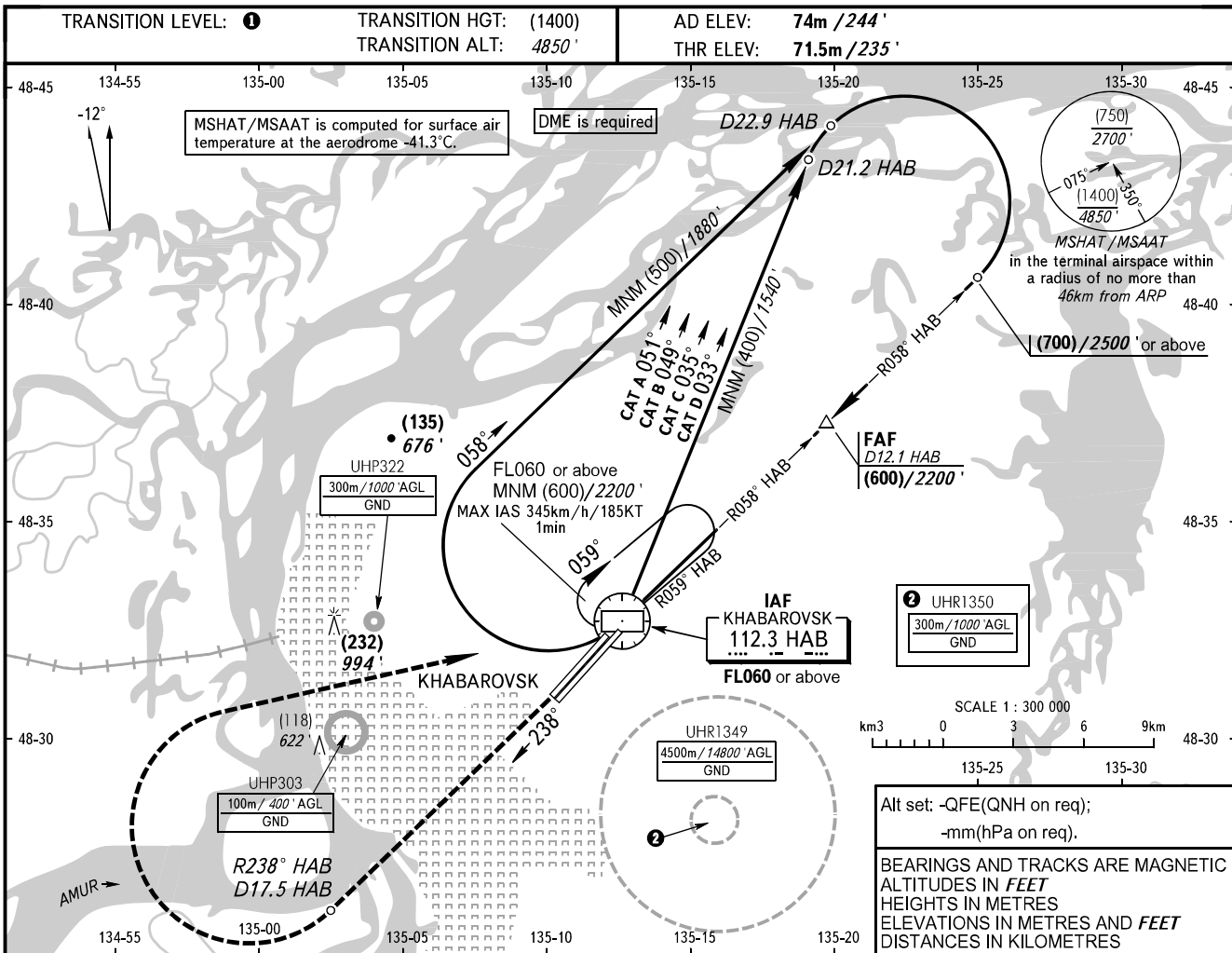


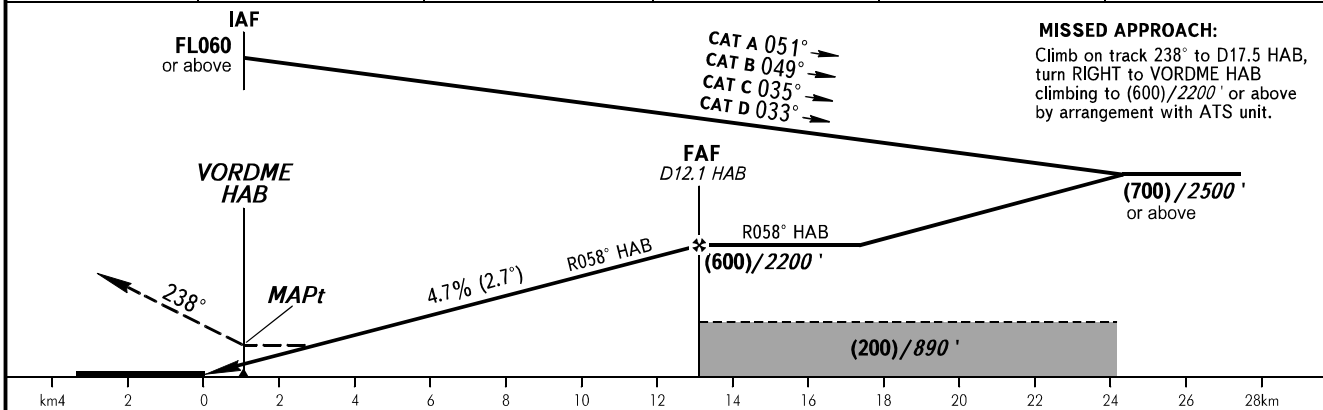
**INSTRUMENT
APPROACH
CHART - ICAO**

APPROACH	125.200
RADAR	120.300
PRECISION	119.300
GROUND	121.800 By ATC

**KHABAROVSK, RUSSIA
NOVY
VOR RWY 23L**



DME HAB	2.0	4.0	6.0	8.0	10.0
HEIGHT/ALTITUDE	(155)/740'	(245)/1040'	(340)/1350'	(435)/1660'	(530)/1970'



OCA(H)		A	B	C	D	1 TRANSITION LEVEL: - FL060 when QFE is 753mm mercury column (1004 hPa) or above; - FL070 when QFE is less than 753mm mercury column (1004 hPa). WARNING: 1. The final approach track is offset by 4° from RCL. 2. MAPt at VORDME HAB. Timing not authorized for defining MAPt. 3. Visual manoeuvring is PROHIBITED.					
Straight-in Approach		245(170) 800'	245(170) 800'	245(170) 800'	245(170) 800'						
	GROUND SPEED	km/h	150	180	210	240	270	300	330	360	390
RATE OF DESCENT		kt	81	97	113	130	146	162	178	194	211
		m/s	2.0	2.4	2.7	3.1	3.5	3.9	4.3	4.7	5.1
		ft/min	385	463	540	617	694	771	848	925	1002

CHANGE: COM, MSHAT/MSAAT