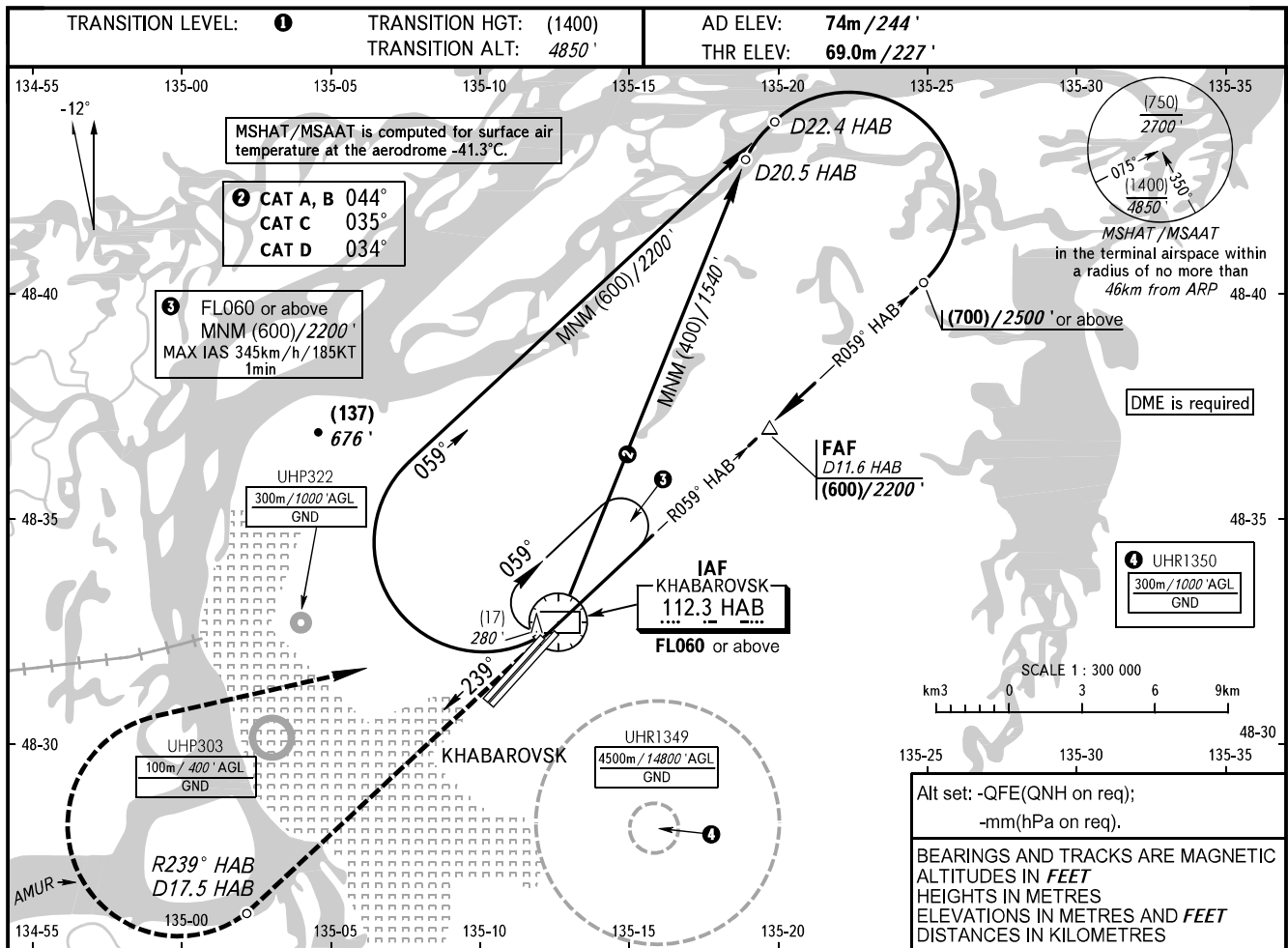


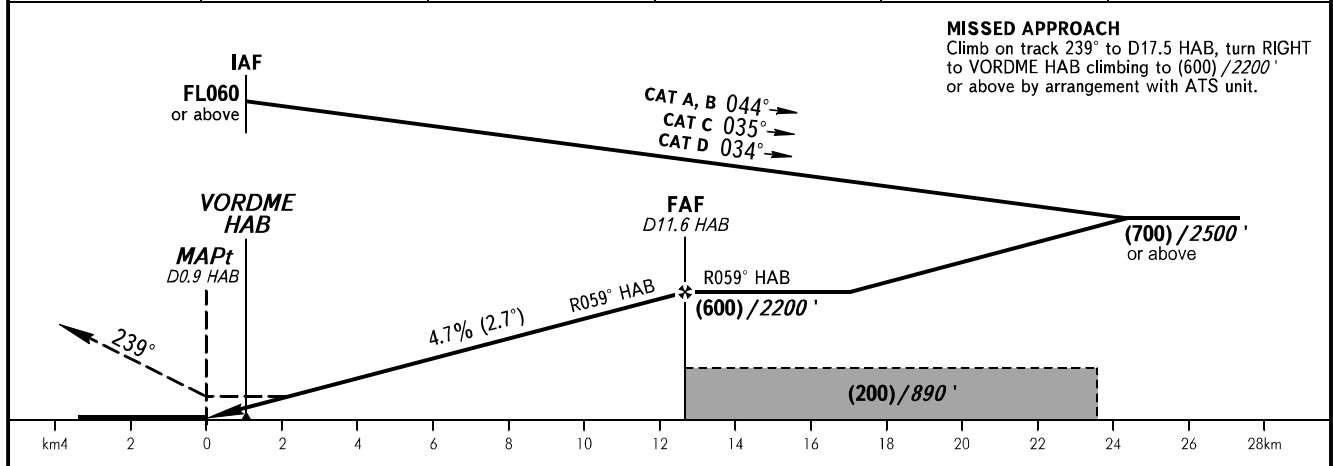
**INSTRUMENT  
APPROACH  
CHART - ICAO**

APPROACH	125.200
RADAR	120.300
PRECISION	119.300
GROUND	121.800 By ATC

**KHABAROVSK, RUSSIA  
NOVY  
VOR RWY 23R**



DME HAB	2.0	4.0	6.0	8.0	10.0
HEIGHT/ALTITUDE	(155)/730'	(245)/1030'	(340)/1340'	(435)/1650'	(530)/1960'



OCA(H)		A	B	C	D	<b>① TRANSITION LEVEL:</b> - FL060 when QFE is 753mm (1004 hPa) mercury column or above; - FL070 when QFE is less than 753mm (1004 hPa) mercury column. <b>WARNING:</b> 1. The final approach track is offset by 5° from RCL. 2. MAPt at D0.9 HAB. Timing not authorized for defining MAPt. 3. Visual manoeuvring is PROHIBITED. 4. Turn before MAPt is PROHIBITED.					
Straight-in	Approach	180(110) 590'	180(110) 590'	180(110) 590'	180(110) 590'						
GROUND SPEED		km/h	150	180	210	240	270	300	330	360	390
		kt	81	97	113	130	146	162	178	194	211
RATE OF DESCENT		m/s	2.0	2.4	2.7	3.1	3.5	3.9	4.3	4.7	5.1
		ft/min	385	463	540	617	694	771	848	925	1002