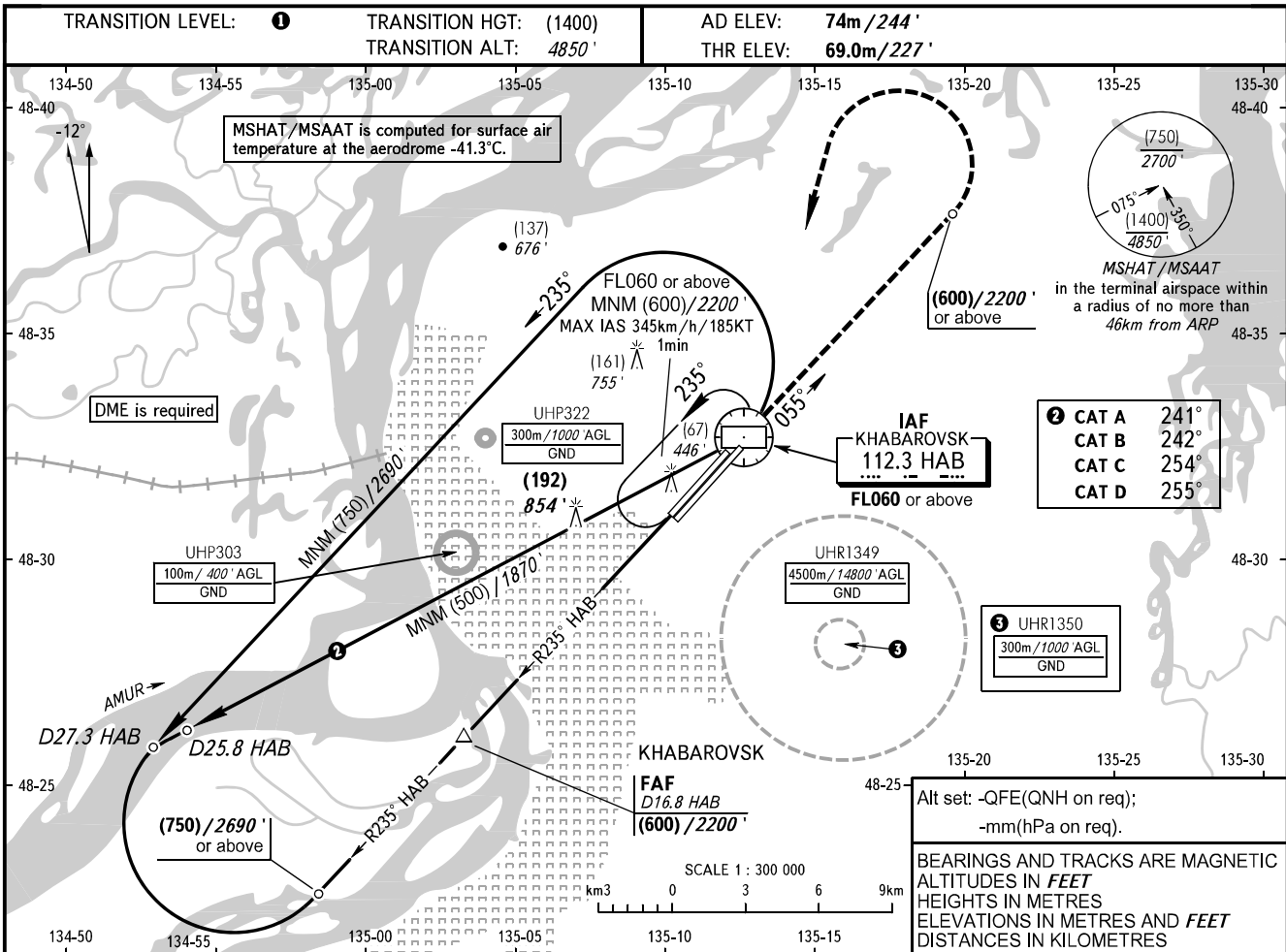


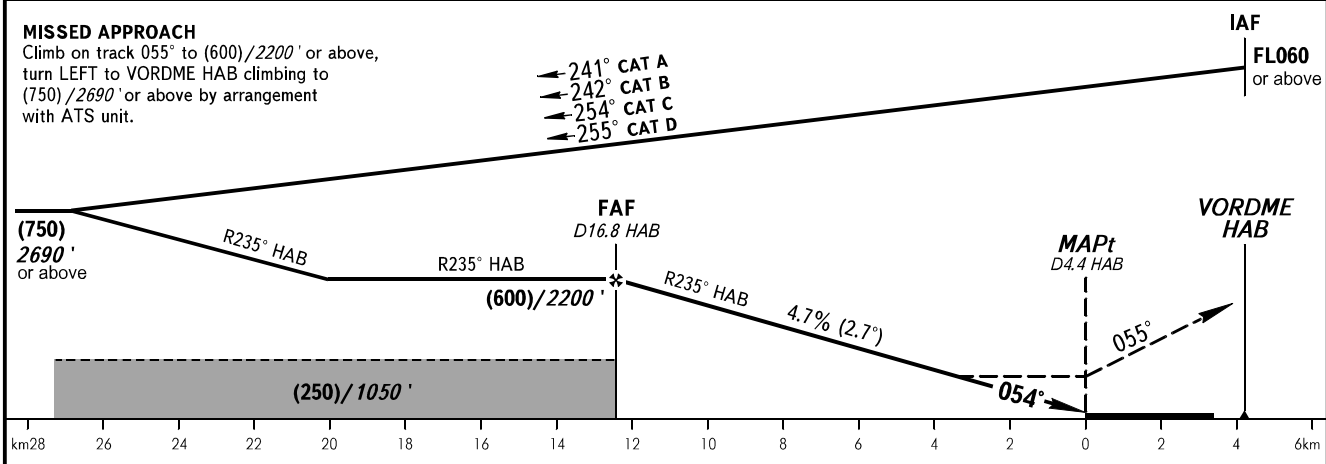
**INSTRUMENT
APPROACH
CHART - ICAO**

APPROACH	125.200
RADAR	120.300
PRECISION	119.300
GROUND	121.800 By ATC

KHABAROVSK, RUSSIA
NOVY
VOR RWY 05L



DME HAB	16.0	14.0	12.0	10.0	8.0	6.0
HEIGHT/ALTITUDE	(560) / 2070'	(470) / 1760'	(375) / 1450'	(280) / 1140'	(185) / 830'	(90) / 530'



OCA(H)		A	B	C	D	① TRANSITION LEVEL: - FL060 when QFE is 753mm (1004 hPa) mercury column or above; - FL070 when QFE is less than 753mm (1004 hPa) mercury column.				
Straight-in	Approach	290(220) 950'	290(220) 950'	290(220) 950'	290(220) 950'	③ WARNING: 1. The final approach track is offset by 1° from RCL. 2. MAPt at D4.4 HAB. Timing not authorized for defining MAPt. 3. Visual manoeuvring is PROHIBITED.				
	Approach									
GROUND SPEED	km/h	150	180	210	240	270	300	330	360	390
	kt	81	97	113	130	146	162	178	194	211
RATE OF DESCENT	m/s	2.0	2.4	2.7	3.1	3.5	3.9	4.3	4.7	5.1
	ft/min	385	463	540	617	694	771	848	925	1002

CHANGE: COM, MSHAT/MSAAT