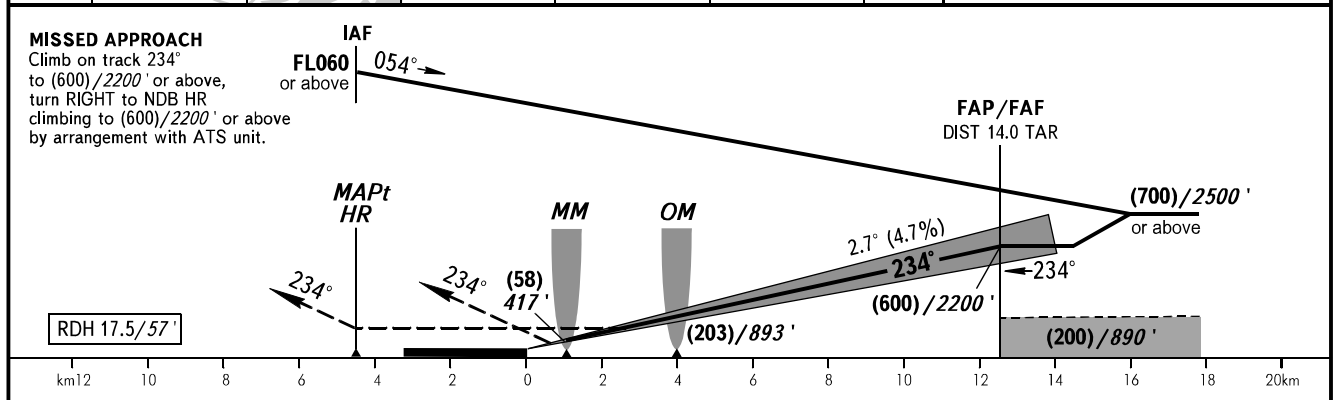
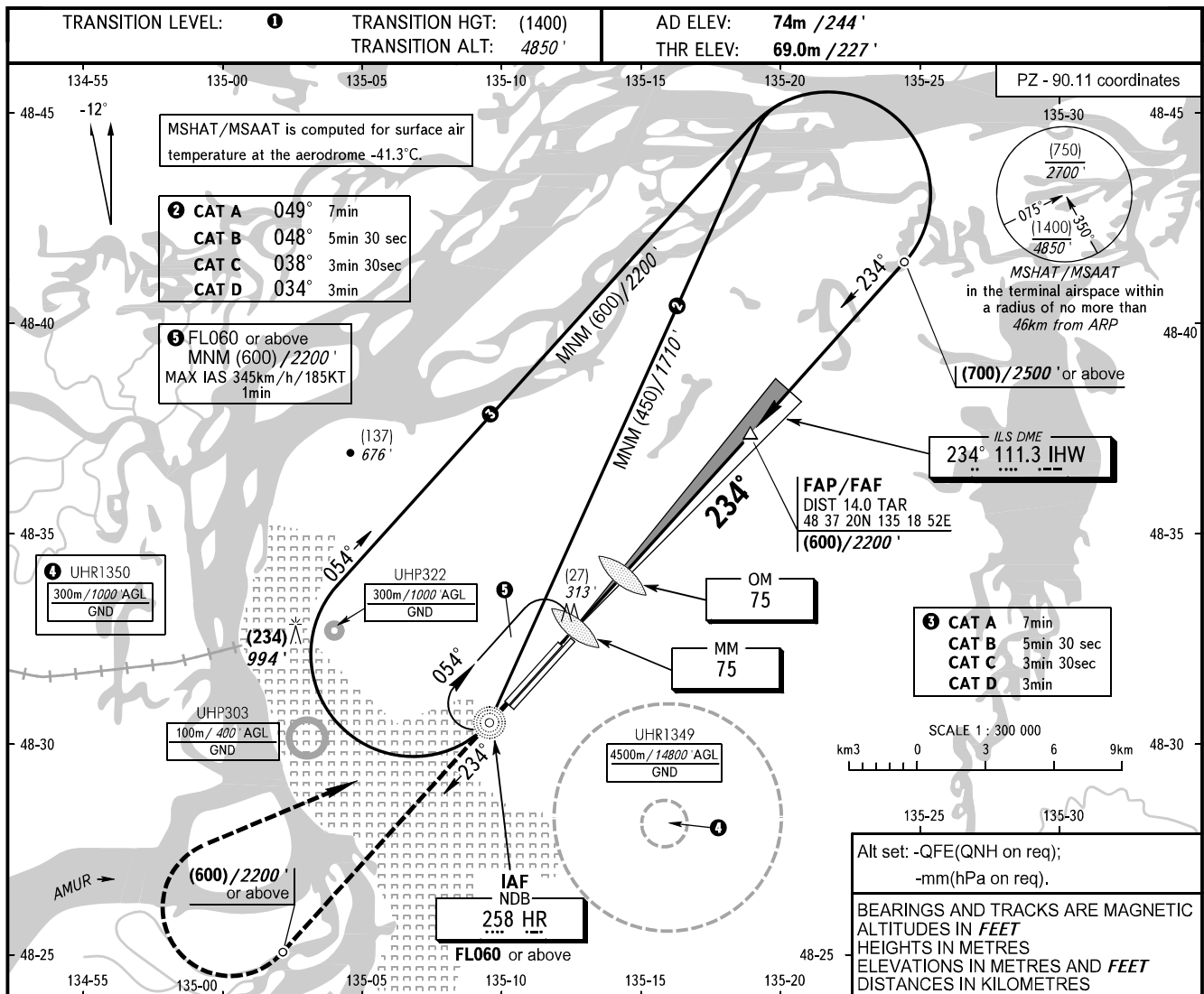


INSTRUMENT
APPROACH
CHART - ICAO

| | |
|-----------|----------------|
| APPROACH | 125.200 |
| RADAR | 120.300 |
| PRECISION | 119.300 |
| GROUND | 121.800 By ATC |

KHABAROVSK, RUSSIA
NOVY
ILS W CAT I/II, LOC W RWY 23R



| OCA(H) | | A | B | C | D | ① TRANSITION LEVEL: | | | | | |
|----------------------|---------------|------------------|------------------|------------------|------------------|--|-----|-----|-----|-----|------|
| Straight-in Approach | CAT I | 129(60) 423' | 129(60) 423' | 129(60) 423' | 129(60) 423' | - FL060 when QFE is 753mm mercury column (1004 hPa) or above; - FL070 when QFE is less than 753mm mercury column (1004 hPa). | | | | | |
| | CAT II | (30) (98') | (30) (98') | (30) (98') | (30) (98') | NOTE: | | | | | |
| | LOC | 170(100) 560' | 170(100) 560' | 170(100) 560' | 170(100) 560' | 1. MAPt at NDB HR. Timing not authorized for defining MAPt. 2. Zero range of DME IHW is indicated at RWY 23R THR. 3. Visual manoeuvring is PROHIBITED. | | | | | |
| GROUND SPEED | | km/h | 150 | 180 | 210 | 240 | 270 | 300 | 330 | 360 | 390 |
| | | kt | 81 | 97 | 113 | 130 | 146 | 162 | 178 | 194 | 211 |
| RATE OF DESCENT | | m/s | 2.0 | 2.4 | 2.7 | 3.1 | 3.5 | 3.9 | 4.3 | 4.7 | 5.1 |
| | | ft/min | 385 | 463 | 540 | 617 | 694 | 771 | 848 | 925 | 1002 |