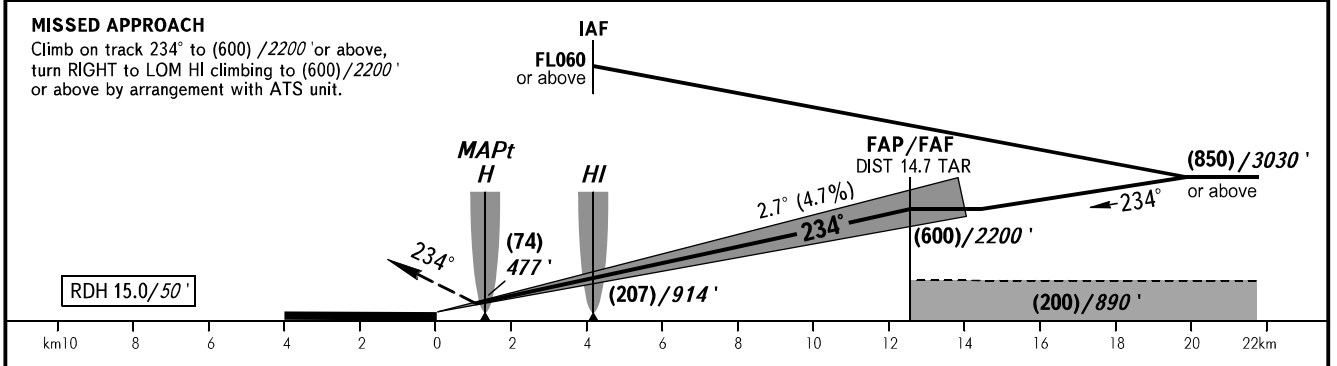
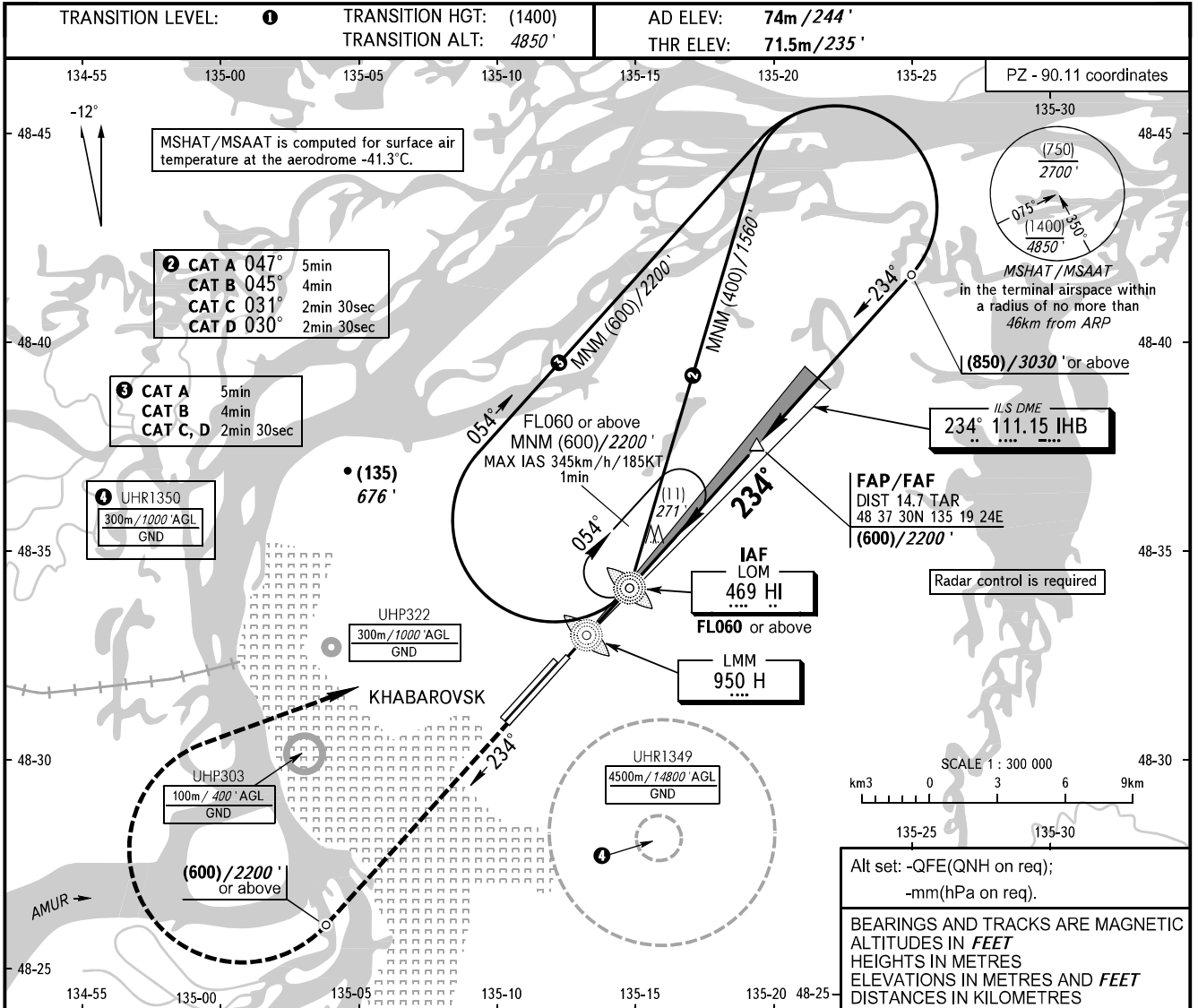


**INSTRUMENT  
APPROACH  
CHART - ICAO**

APPROACH	125.200
RADAR	120.300
PRECISION	119.300
GROUND	121.800 By ATC

**KHABAROVSK, RUSSIA  
NOVY  
ILS W CAT I, LOC W RWY 23L**



OCA(H)		A	B	C	D
Straight-in Approach	<b>CAT I</b>	132(60) 433'	132(60) 433'	132(60) 433'	132(60) 433'
	<b>LOC</b>	165(95) 540'	165(95) 540'	165(95) 540'	165(95) 540'

① **TRANSITION LEVEL:**  
 - FL060 when QFE is 753mm mercury column (1004 hPa) or above;  
 - FL070 when QFE is less than 753mm mercury column (1004 hPa).

**NOTE:**  
 1. MAPt at LMM H. Timing not authorized for defining MAPt.  
 2. Turn before MAPt is PROHIBITED.  
 3. Visual manoeuvring is PROHIBITED.

	km/h	150	180	210	240	270	300	330	360	390
		GROUND SPEED	81	97	113	130	146	162	178	194
	m/s	2.0	2.4	2.7	3.1	3.5	3.9	4.3	4.7	5.1
		RATE OF DESCENT	385	463	540	617	694	771	848	925
	ft/min									

CHANGE: COM, MSHAT/MSAAT