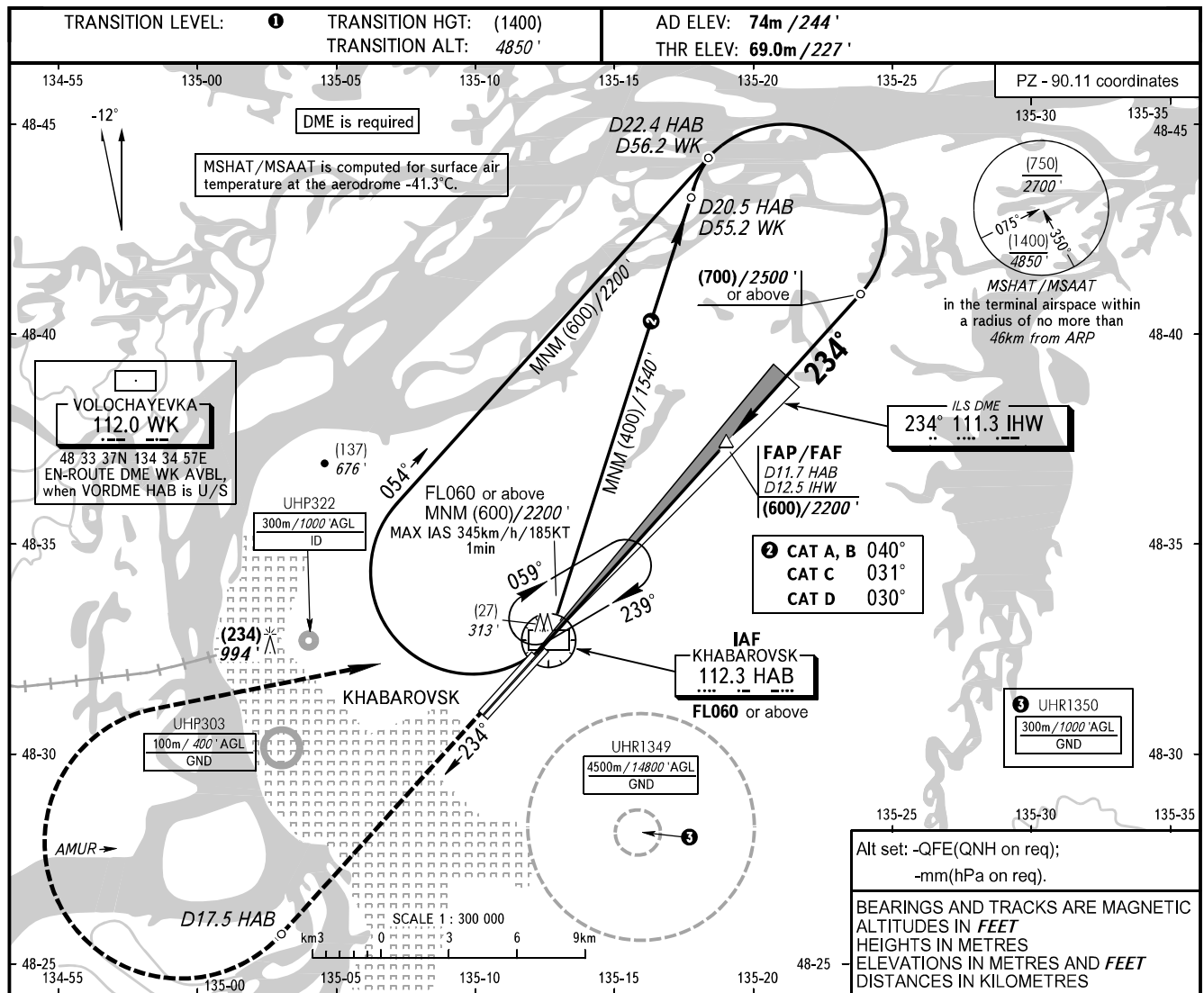


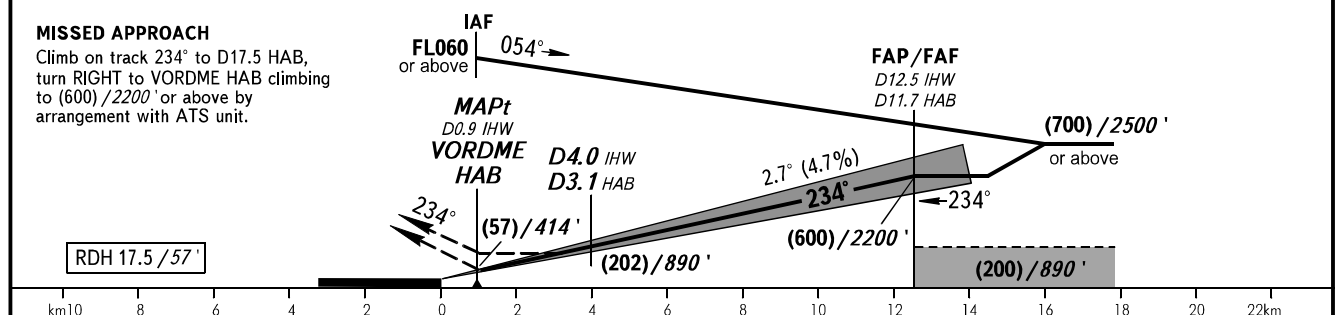
**INSTRUMENT
APPROACH
CHART - ICAO**

APPROACH	125.200
RADAR	120.300
PRECISION	119.300
GROUND	121.800 By ATC

**KHABAROVSK, RUSSIA
NOVY
ILS X CAT I/II, LOC X RWY 23R**



DME IHW	2.0	4.0	6.0	8.0	10.0	12.0
HEIGHT / ALTITUDE	(110) / 590'	(205) / 900'	(300) / 1210'	(395) / 1520'	(485) / 1830'	(580) / 2140'



OCA(H)		A	B	C	D	1 TRANSITION LEVEL: - FL060 when QFE is 753mm mercury column (1004 hPa) or above; - FL070 when QFE is less than 753mm (1004 hPa) mercury column.									
Straight-in Approach	CAT I	129(60) 423'	129(60) 423'	129(60) 423'	129(60) 423'	NOTE: 1. MAPt at D0.9 IHW. Timing not authorized for defining MAPt. 2. Zero range of DME IHW is indicated at RWY 23R THR. 3. Visual manoeuvring is PROHIBITED. 4. Turn before MAPt is PROHIBITED.									
	CAT II	(30) (100')	(30) (100')	(30) (100')	(30) (100')										
	LOC	170(100) 560'	170(100) 560'	170(100) 560'	170(100) 560'										
GROUND SPEED		km/h	150	180	210	240	270	300	330	360	390				
		kt	81	97	113	130	146	162	178	194	211				
RATE OF DESCENT		m/s	2.0	2.4	2.7	3.1	3.5	3.9	4.3	4.7	5.1				
		ft/min	385	463	540	617	694	771	848	925	1002				

CHANGE: COM, MSHAT/MSAAT