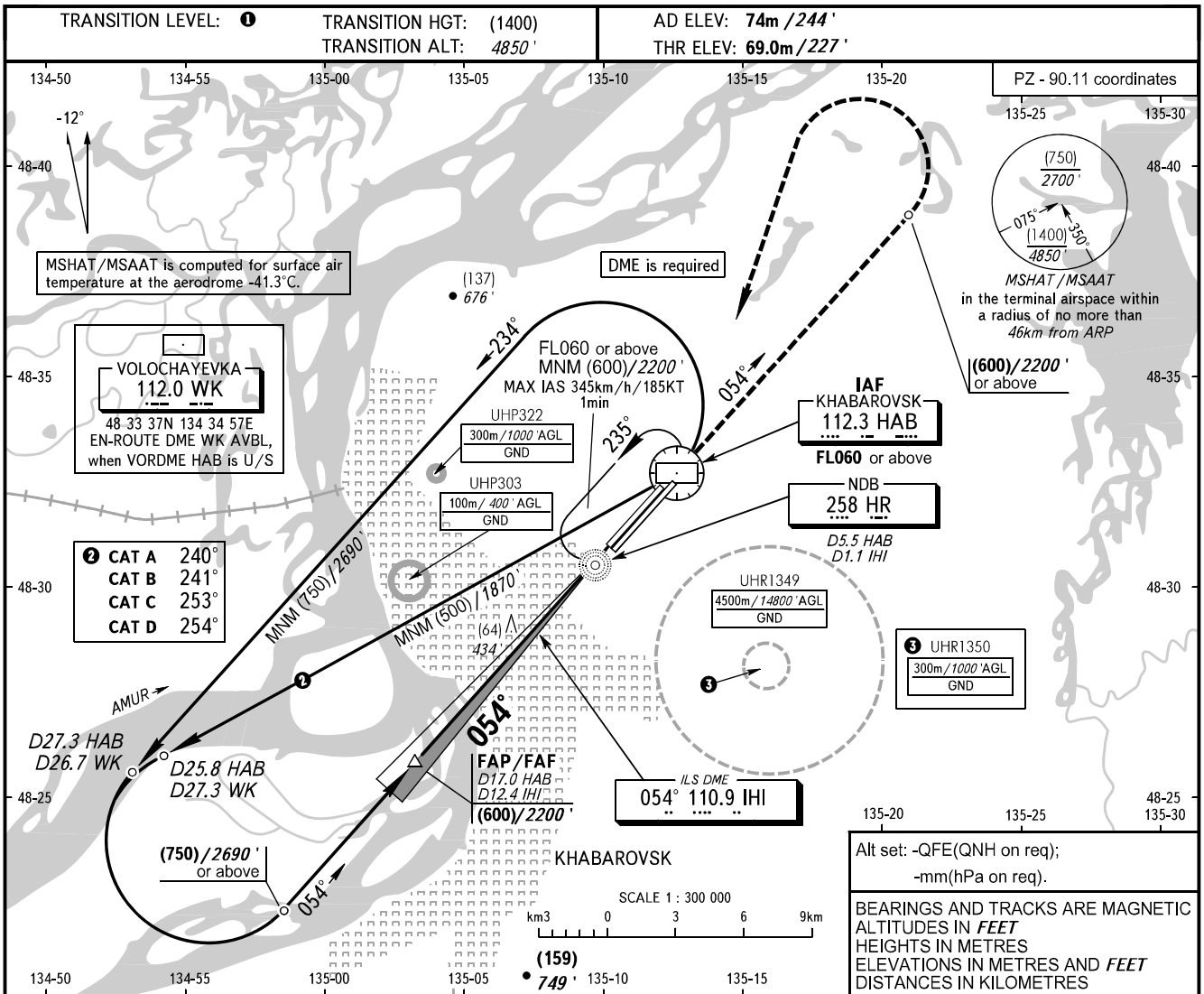


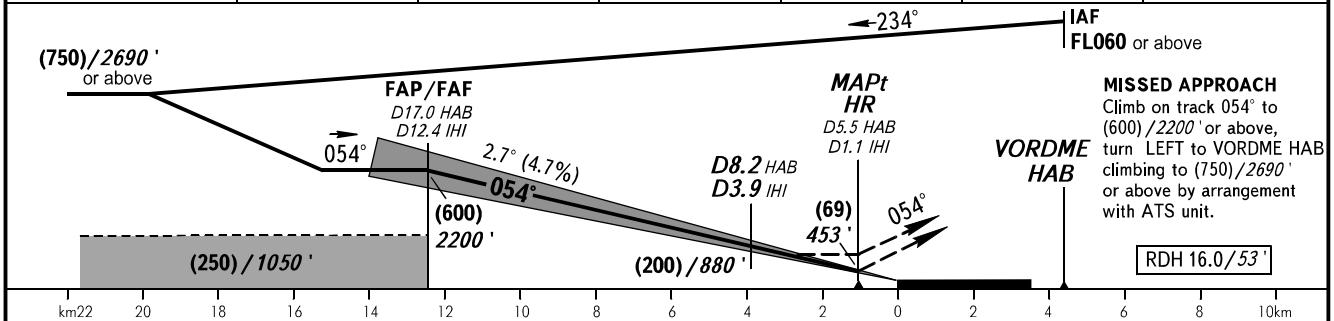
**INSTRUMENT
APPROACH
CHART - ICAO**

APPROACH	125.200
RADAR	120.300
PRECISION	119.300
GROUND	121.800 By ATC

KHABAROVSK, RUSSIA
NOVY
ILS X CAT I/II, LOC X RWY 05L



DME IHI	12.0	10.0	8.0	6.0	4.0	2.0
HEIGHT/ALTITUDE	(580)/2140'	(485)/1830'	(395)/1520'	(300)/1210'	(205)/900'	(110)/590'



OCA(H)		A	B	C	D	TRANSITION LEVEL: - FL060 when QFE is 753mm mercury column (1004 hPa) or above; - FL070 when QFE is less than 753mm (1004 hPa) mercury column. NOTE: 1. MAPt at D1.1 IHI. Timing not authorized for defining MAPt. 2. Zero range of DME IHI is indicated at RWY 05L THR. 3. Visual manoeuvring is PROHIBITED.
Straight-in Approach	CAT I	128(60) 420'	128(60) 420'	128(60) 420'	128(60) 420'	
	CAT II	(30) (100')	(30) (100')	(30) (100')	(30) (100')	
	LOC	210(145) 690'	210(145) 690'	210(145) 690'	210(145) 690'	

GROUND SPEED	km/h	150	180	210	240	270	300	330	360	390
	kt	81	97	113	130	146	162	178	194	211
RATE OF DESCENT	m/s	2.0	2.4	2.7	3.1	3.5	3.9	4.3	4.7	5.1
	ft/min	385	463	540	617	694	771	848	925	1002

CHANGE: COM: MSHAT/MSAAT