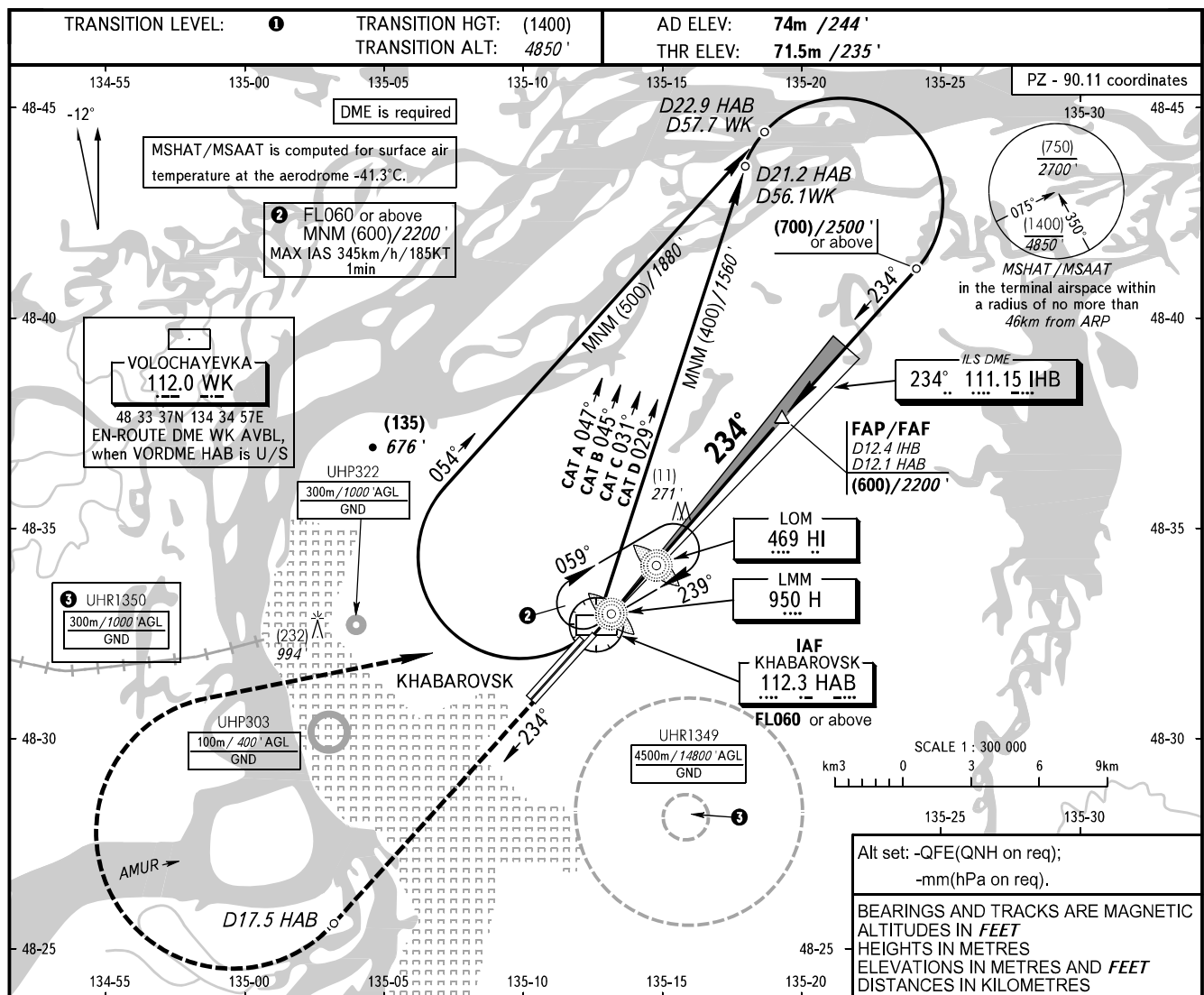


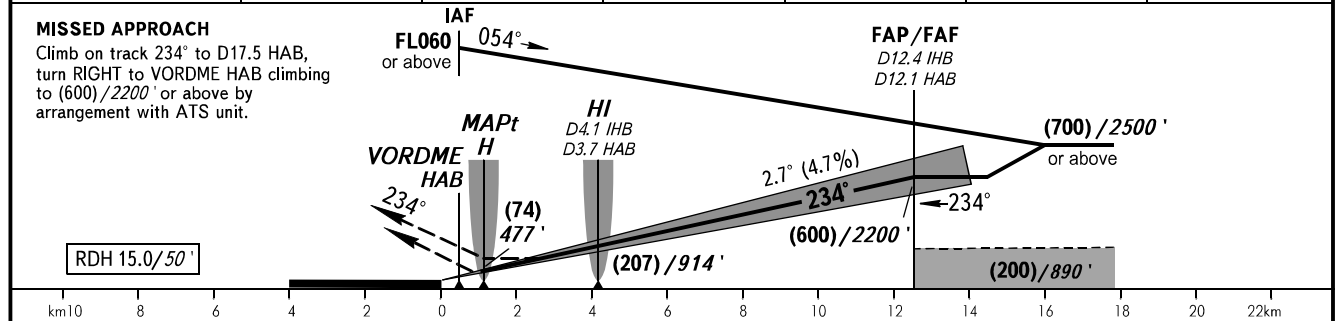
**INSTRUMENT  
APPROACH  
CHART - ICAO**

APPROACH	<b>125.200</b>
RADAR	<b>120.300</b>
PRECISION	<b>119.300</b>
GROUND	<b>121.800</b> By ATC

**KHABAROVSK, RUSSIA**  
NOVY  
ILS X CAT I, LOC X RWY 23L



DME IHB	2.0	4.0	6.0	8.0	10.0	12.0
HEIGHT/ALTITUDE	(110)/590'	(205)/900'	(300)/1210'	(395)/1520'	(485)/1830'	(580)/2140'



OCA(H)		A	B	C	D	<b>1</b> TRANSITION LEVEL: - FL060 when QFE is 753mm mercury column (1004 hPa) or above; - FL070 when QFE is less than 753mm mercury column (1004 hPa). <b>NOTE:</b> 1. MAPt at LMM H. Timing not authorized for defining MAPt. 2. Zero range of DME IHB is indicated at RWY 23L THR. 3. Visual manoeuvring is PROHIBITED.				
Straight-in Approach	<b>CAT I</b>	132(60) 433'	132(60) 433'	132(60) 433'	132(60) 433'					
	<b>LOC</b>	165(95) 540'	165(95) 540'	165(95) 540'	165(95) 540'					
GROUND SPEED	km/h	150	180	210	240	270	300	330	360	390
	kt	81	97	113	130	146	162	178	194	211
RATE OF DESCENT	m/s	2.0	2.4	2.7	3.1	3.5	3.9	4.3	4.7	5.1
	ft/min	385	463	540	617	694	771	848	925	1002