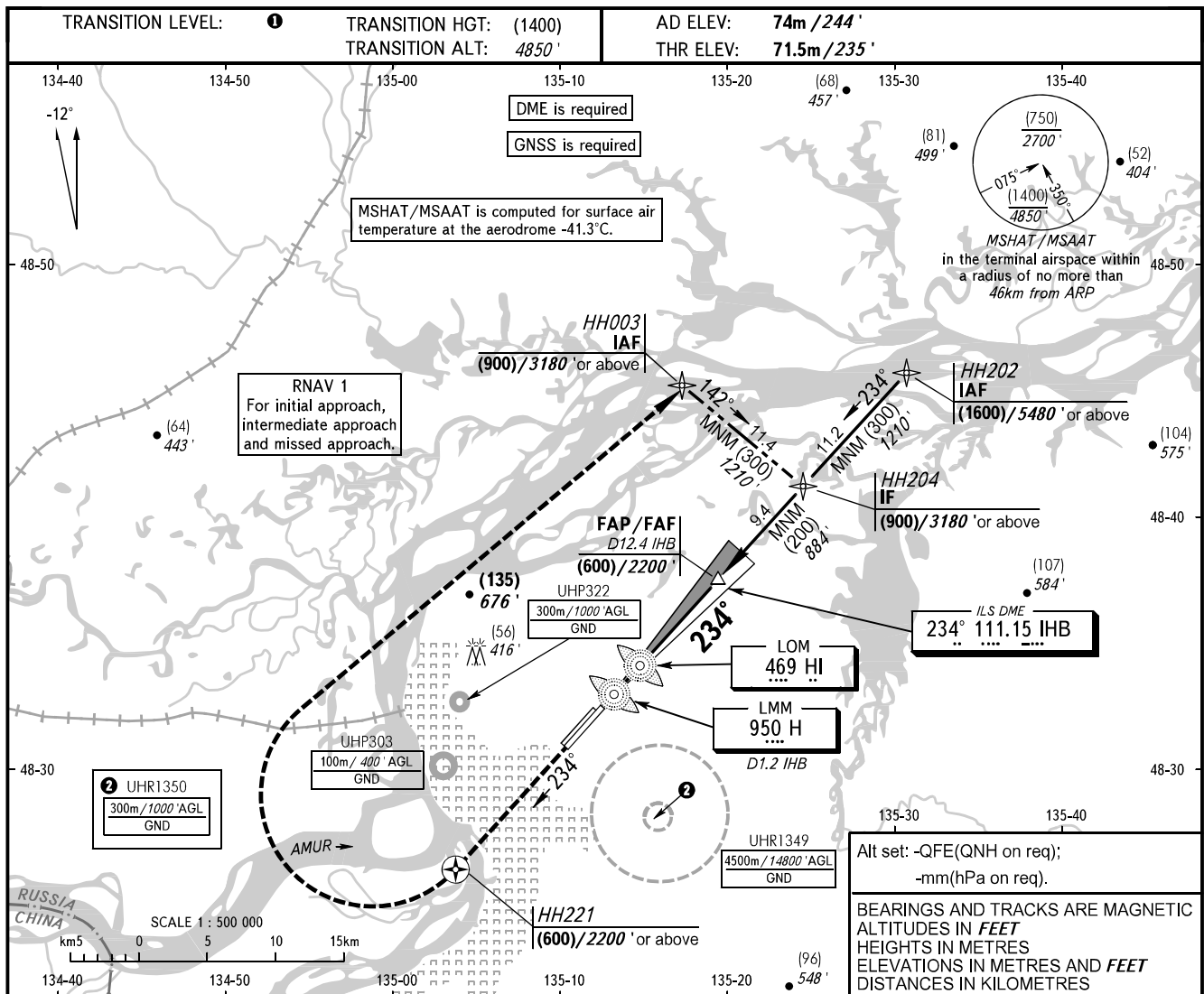


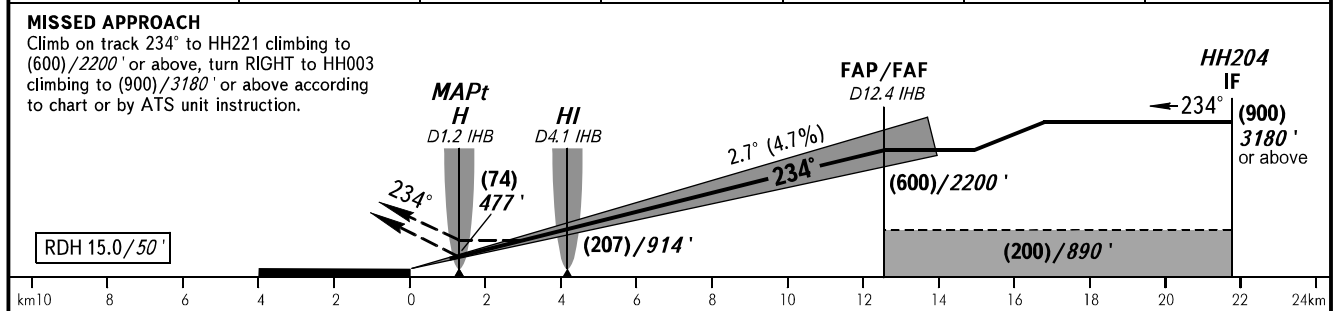
INSTRUMENT
APPROACH
CHART - ICAO

APPROACH	125.200
RADAR	120.300
PRECISION	119.300
GROUND	121.800 By ATC

KHABAROVSK, RUSSIA
NOVY
ILS Z CAT I, LOC Z RWY 23L



DME IHB	2.0	4.0	6.0	8.0	10.0	12.0
HEIGHT/ALTITUDE	(110)/590'	(205)/900'	(300)/1210'	(395)/1520'	(485)/1830'	(580)/2140'



OCA(H)		A	B	C	D	TRANSITION LEVEL: - FL060 when QFE is 753mm mercury column (1004 hPa) or above; - FL070 when QFE is less than 753mm mercury column (1004 hPa). NOTE: 1. MAPt at LMM H. Timing not authorized for defining MAPt. 2. Zero range of DME IHB is indicated at RWY 23L THR. 3. Visual manoeuvring is PROHIBITED.					
Straight-in Approach	CAT I	132(60) 433'	132(60) 433'	132(60) 433'	132(60) 433'						
	LOC	165(95) 540'	165(95) 540'	165(95) 540'	165(95) 540'						
GROUND SPEED		km/h	150	180	210	240	270	300	330	360	390
RATE OF DESCENT		kt	81	97	113	130	146	162	178	194	211
		m/s	2.0	2.4	2.7	3.1	3.5	3.9	4.3	4.7	5.1
		ft/min	385	463	540	617	694	771	848	925	1002