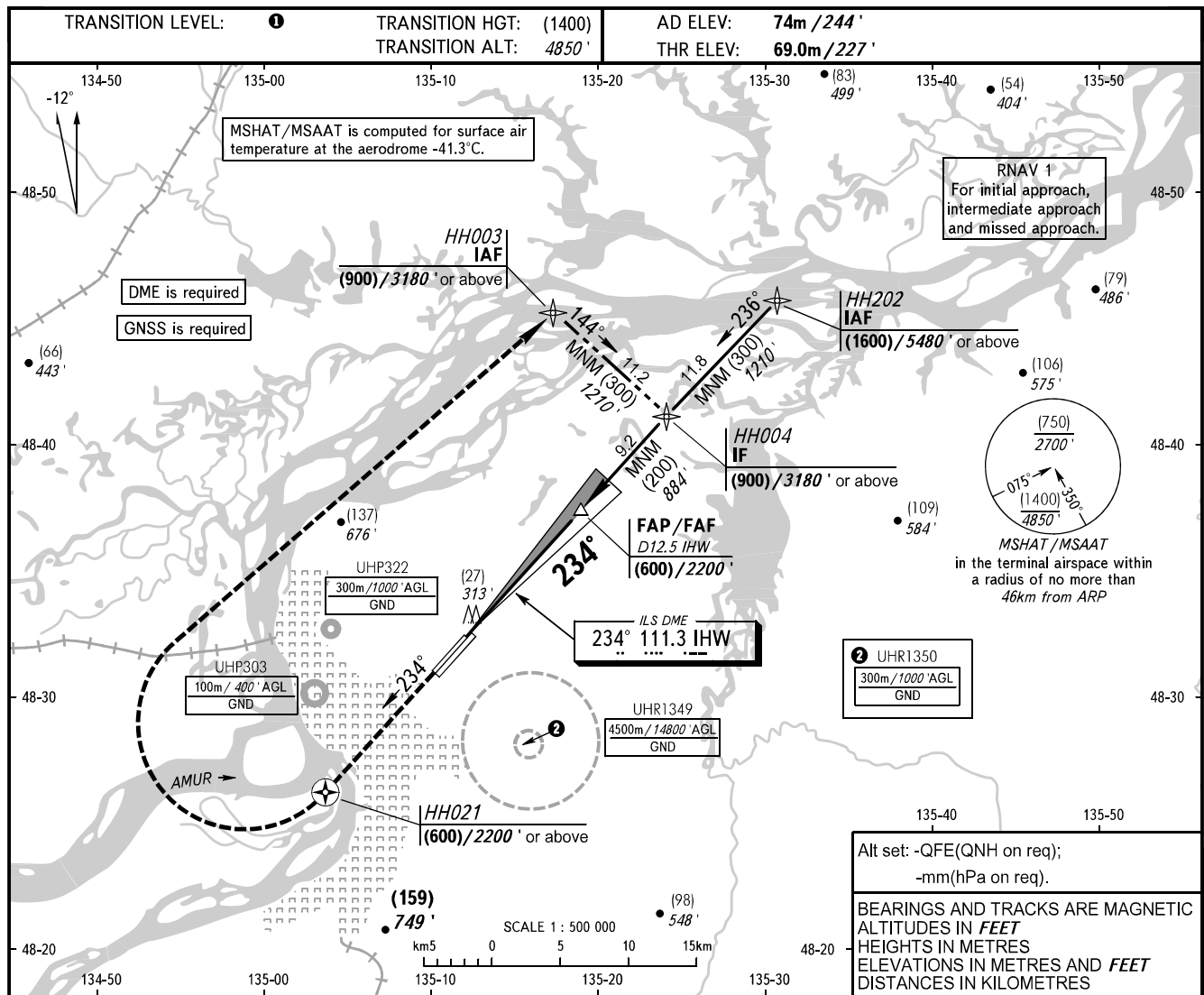


**INSTRUMENT
APPROACH
CHART - ICAO**

APPROACH	125.200
RADAR	120.300
PRECISION	119.300
GROUND	121.800 By ATC

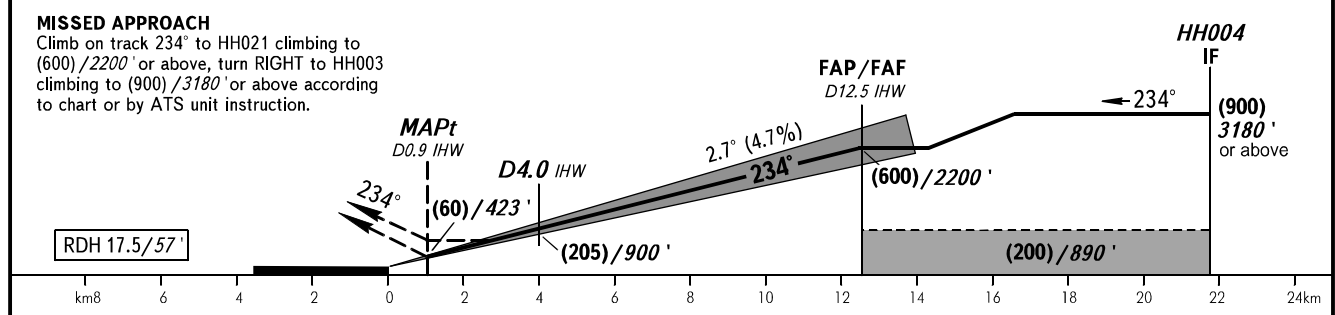
KHABAROVSK, RUSSIA
NOVY
ILS Z CAT I/II, LOC Z RWY 23R



Alt set: -QFE(QNH on req);
-mm(hPa on req).

BEARINGS AND TRACKS ARE MAGNETIC
ALTITUDES IN FEET
HEIGHTS IN METRES
ELEVATIONS IN METRES AND FEET
DISTANCES IN KILOMETRES

DME IHW	2.0	4.0	6.0	8.0	10.0	12.0
HEIGHT/ALTITUDE	(110)/590'	(205)/900'	(300)/1210'	(395)/1520'	(485)/1830'	(580)/2140'



OCA(H)		A	B	C	D	① TRANSITION LEVEL:					
Straight-in Approach	CAT I	129(60) 423'	129(60) 423'	129(60) 423'	129(60) 423'	- FL060 when QFE is 753mm mercury column (1004 hPa) or above; - FL070 when QFE is less than 753mm mercury column (1004 hPa).					
	CAT II	(30) (100')	(30) (100')	(30) (100')	(30) (100')	NOTE:					
	LOC	170(100) 560'	170(100) 560'	170(100) 560'	170(100) 560'	1. MAPt at D0.9 IHW. Timing not authorized for defining MAPt. 2. Zero range of DME IHW is indicated at RWY 23R THR. 3. Visual manoeuvring is PROHIBITED.					
GROUND SPEED		km/h	150	180	210	240	270	300	330	360	390
RATE OF DESCENT		kt	81	97	113	130	146	162	178	194	211
		m/s	2.0	2.4	2.7	3.1	3.5	3.9	4.3	4.7	5.1
		ft/min	385	463	540	617	694	771	848	925	1002