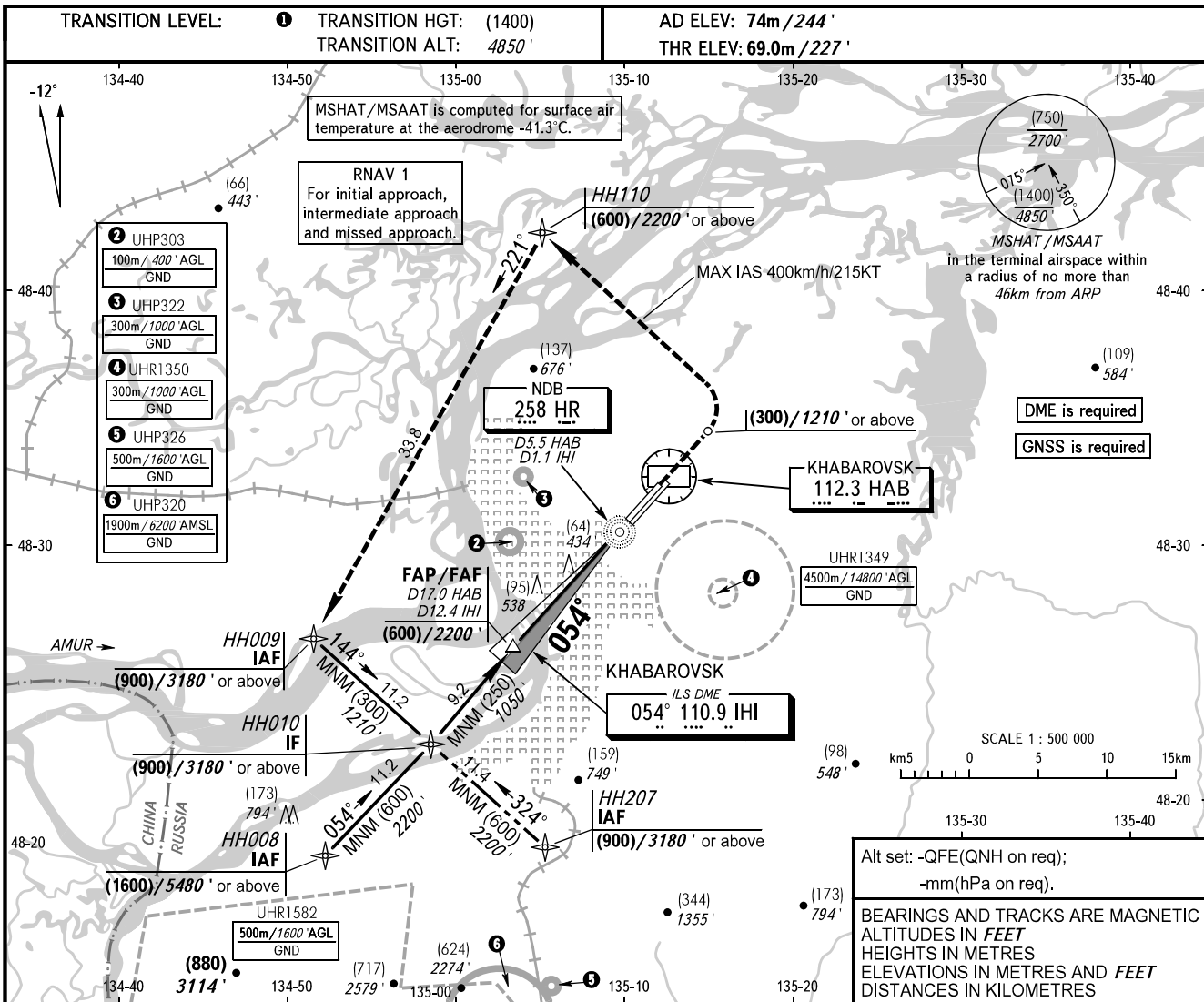


**INSTRUMENT
APPROACH
CHART - ICAO**

APPROACH	125.200
RADAR	120.300
PRECISION	119.300
GROUND	121.800 By ATC

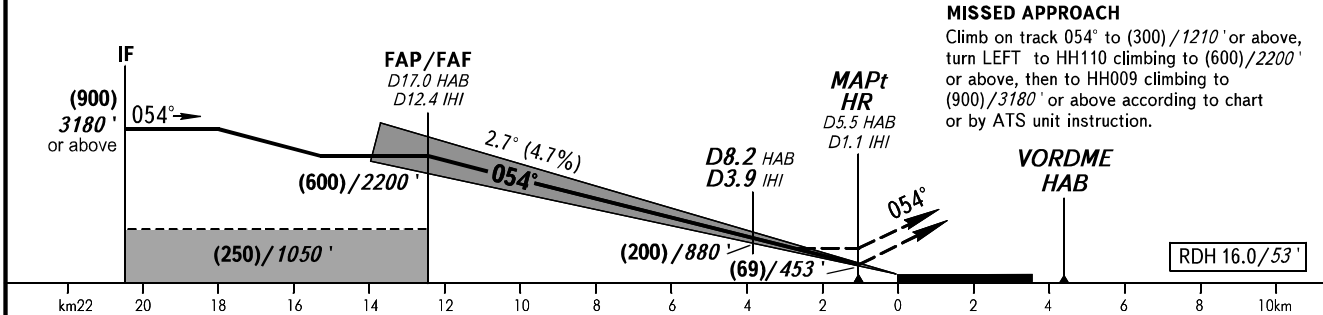
KHABAROVSK, RUSSIA
NOVY
ILS Z CAT I/II, LOC Z RWY 05L



Alt set: -QFE(QNH on req);
-mm(hPa on req).

BEARINGS AND TRACKS ARE MAGNETIC
ALTITUDES IN FEET
HEIGHTS IN METRES
ELEVATIONS IN METRES AND FEET
DISTANCES IN KILOMETRES

DME IHI	12.0	10.0	8.0	6.0	4.0	2.0
HEIGHT/ALTITUDE	(580)/2140'	(485)/1830'	(395)/1520'	(300)/1210'	(205)/900'	(110)/590'



MISSED APPROACH
Climb on track 054° to (300)/1210' or above,
turn LEFT to HH110 climbing to (600)/2200'
or above, then to HH009 climbing to
(900)/3180' or above according to chart
or by ATS unit instruction.

OCA(H)		A	B	C	D	① TRANSITION LEVEL:					
Straight-in Approach	CAT I	128(60) 420'	128(60) 420'	128(60) 420'	128(60) 420'	- FL060 when QFE is 753mm mercury column (1004 hPa) or above; - FL070 when QFE is less than 753mm (1004 hPa) mercury column.					
	CAT II	(30) (100')	(30) (100')	(30) (100')	(30) (100')	NOTE:					
	LOC	210(145) 690'	210(145) 690'	210(145) 690'	210(145) 690'	1. MAPt at D1.1 IHI. Timing not authorized for defining MAPt. 2. Zero range of DME IHI is indicated at RWY 05L THR. 3. Turn before MAPt is PROHIBITED. 4. Visual manoeuvring is PROHIBITED.					
GROUND SPEED		km/h	150	180	210	240	270	300	330	360	390
		kt	81	97	113	130	146	162	178	194	211
RATE OF DESCENT		m/s	2.0	2.4	2.7	3.1	3.5	3.9	4.3	4.7	5.1
		ft/min	385	463	540	617	694	771	848	925	1002

CHANGE: COM, MSHAT/MSAAT