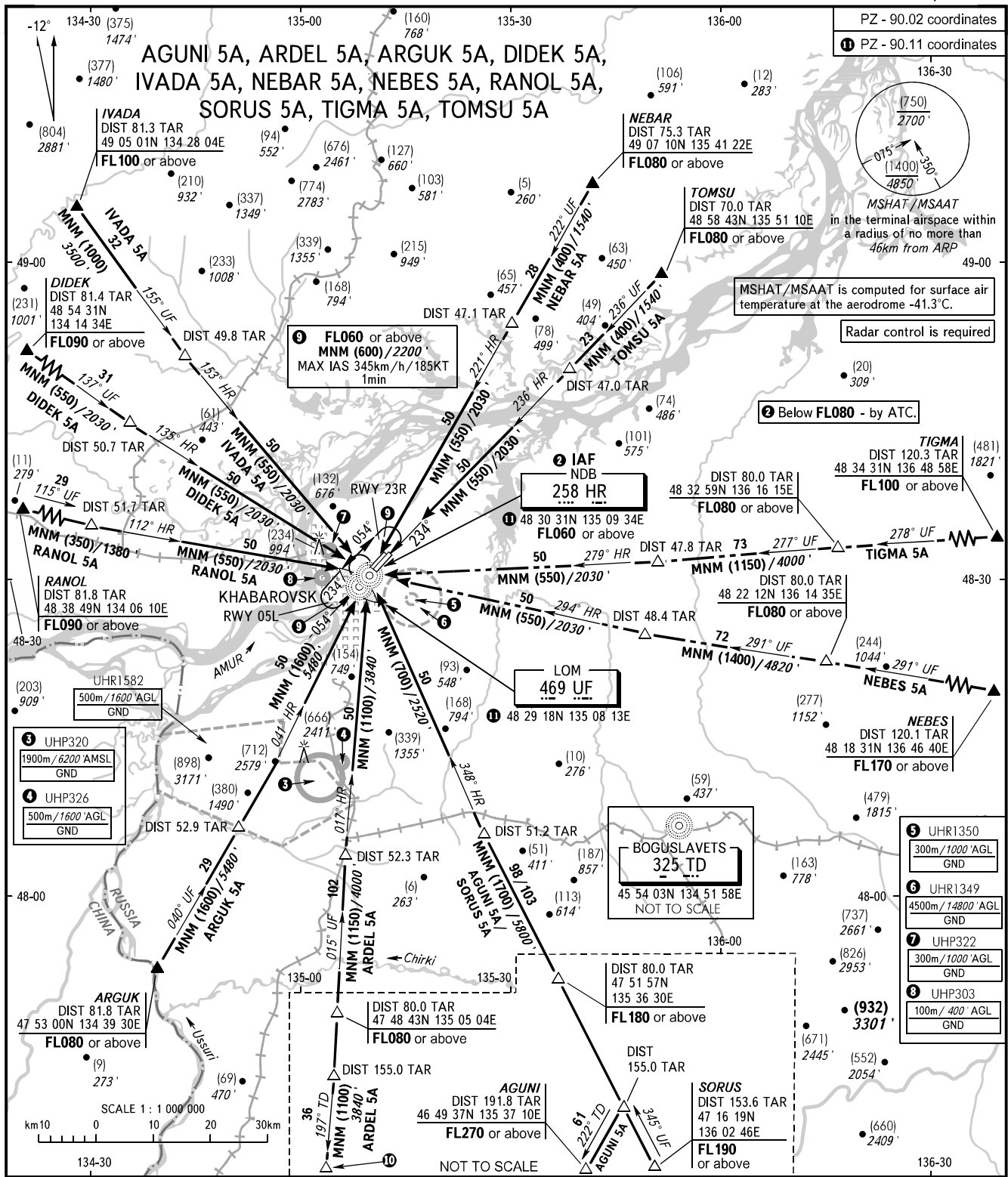


STANDARD ARRIVAL CHART
INSTRUMENT (STAR) - ICAO

KHABAROVSK, RUSSIA
NOVY
RWY 05L/23R X

TRANSITION
LEVEL: 1



APPROACH	125.200
RADAR	120.300
PRECISION	119.300
GROUND	121.800 By ATC

1 TRANSITION LEVEL:
- FL060 when QFE is 753mm (1004 hPa) mercury column or above;
- FL070 when QFE is less than 753mm (1004 hPa) mercury column.

10 ARDEL
DIST 190.6 TAR
46 49 07N 134 59 22E
FL080 or above

BEARINGS AND TRACKS ARE MAGNETIC
ALTITUDES IN FEET
HEIGHTS IN METRES
ELEVATIONS IN METRES AND FEET
DISTANCES IN KILOMETRES

Alt set: -QFE(QNH on req);
-mm(hPa on req).