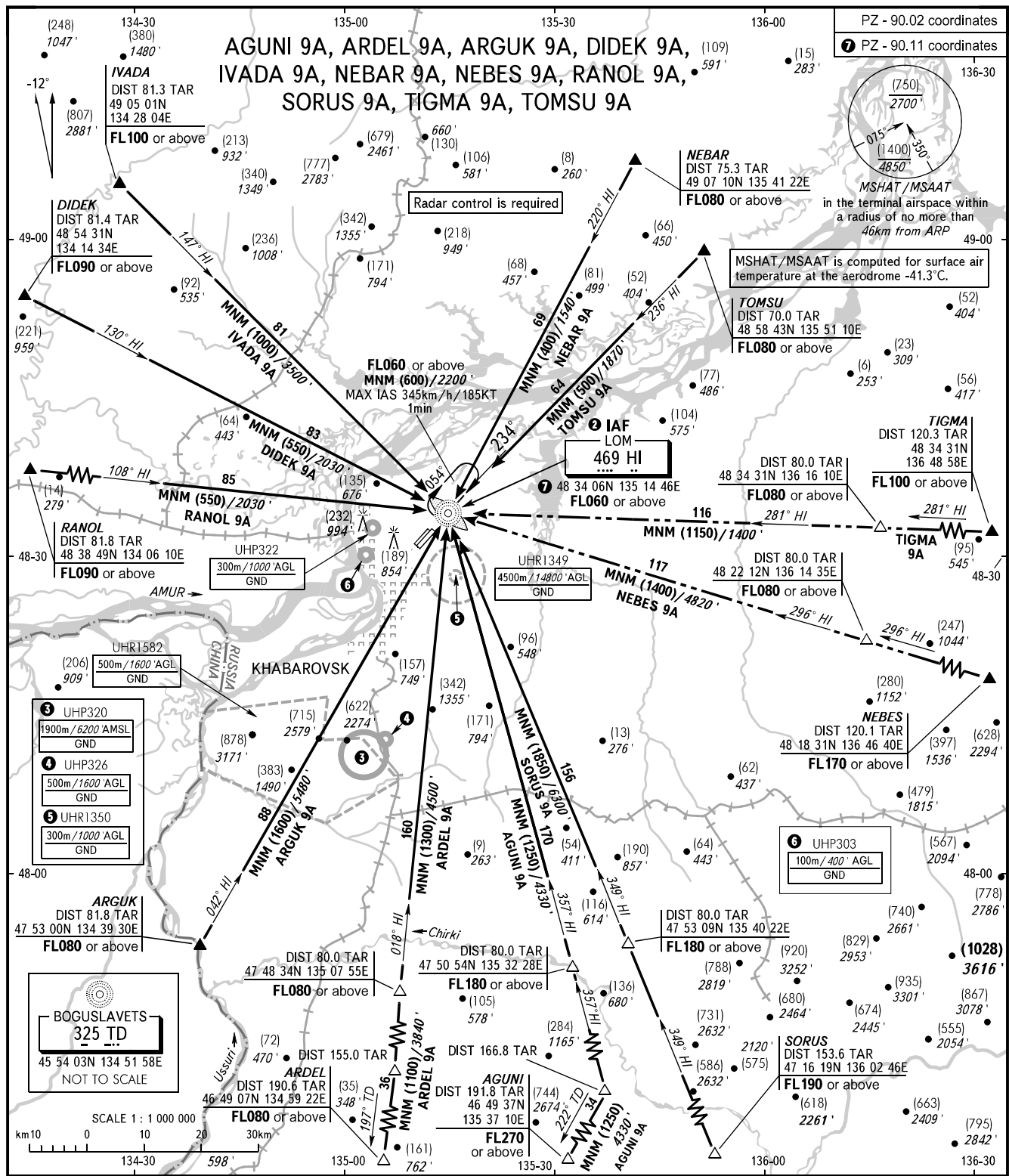


STANDARD ARRIVAL CHART
INSTRUMENT (STAR) - ICAO

TRANSITION
LEVEL: **1**

KHABAROVSK, RUSSIA
NOVY
RWY 23L



APPROACH	125.200
RADAR	120.300
PRECISION	119.300
GROUND	121.800 By ATC

1 TRANSITION LEVEL:
- FL060 when QFE is 753mm (1004 hPa) mercury column or above;
- FL070 when QFE is less than 753mm (1004 hPa) mercury column.

2 Below FL080 - by ATC.

BEARINGS AND TRACKS ARE MAGNETIC
ALTITUDES IN FEET
HEIGHTS IN METRES
ELEVATIONS IN METRES AND FEET
DISTANCES IN KILOMETRES

Alt set: -QFE(QNH on req);
-mm(hPa on req).

CHANGE: COM, MSHAT/MSAAT