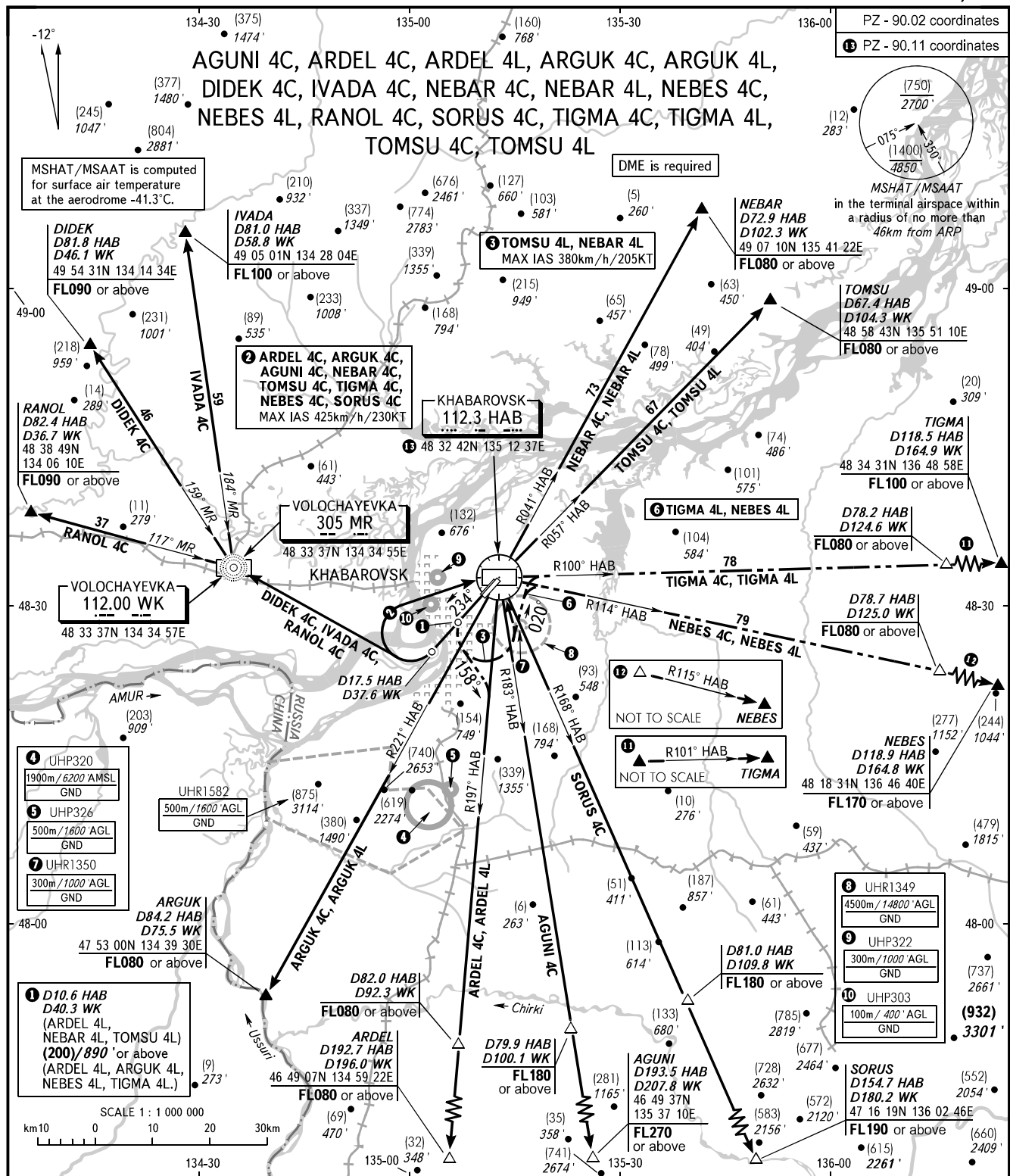


STANDARD DEPARTURE CHART
INSTRUMENT (SID) - ICAO

TRANSITION HGT : (1400)
TRANSITION ALT : 4850'

KHABAROVSK, RUSSIA
NOVY
RWY 23R, 23L



START 119.300
GROUND 121.800 By ATC
RADAR 120.300
APPROACH 125.200

2 The minimum climb gradient required due to the airspace structure is 4.6% up to FL080 for SID ARDEL 4C, ARGUK 4C, AGUNI 4C, NEBAR 4C, NEBES 4C, SORUS 4C, TIGMA 4C, TOMSU 4C. If unable to maintain the minimum climb gradient, inform ATC. Climb to VORDME HAB to FL080 or above - coordination with ATC not required.

WARNING:

- The minimum climb gradients required due to the airspace structure:
 - 4.0% up to FL060 for SID ARGUK 4L;
 - 3.4% up to FL150 for SID IVADA 4C, when joining AWY A333;
 - 3.6% up to FL190 for SID IVADA 4C, when joining AWY B912;
 - 3.8% up to FL200 for SID IVADA 4C, when joining AWY B152.
- Turn before passing DER is PROHIBITED.
- There are close-in obstacles (trees) located to the right of take-off heading at DIST 100-162m from DER with MAX ELEV (15)/279'.

BEARINGS AND TRACKS ARE MAGNETIC
ALTITUDES IN FEET
HEIGHTS IN METRES
ELEVATIONS IN METRES AND FEET
DISTANCES IN KILOMETRES

Alt set: -QFE(QNH on req);
-mm(hPa on req).

CHANGE: COM, MSHAT/MSAAT