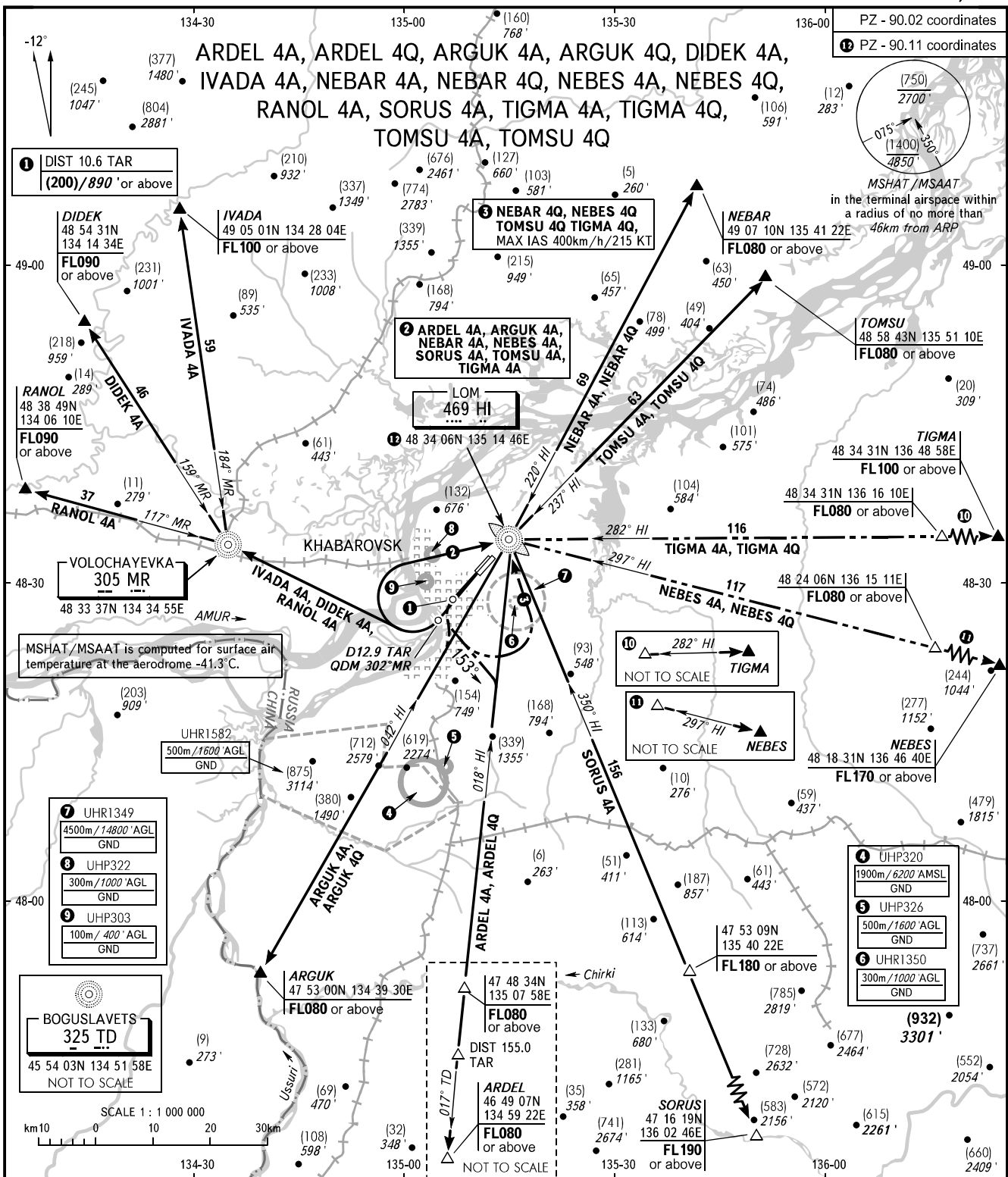


STANDARD DEPARTURE CHART
INSTRUMENT (SID) - ICAO

KHABAROVSK, RUSSIA
NOVY
RWY 23R, 23L

TRANSITION HGT : (1400)
TRANSITION ALT : 4850'



START 119.300
GROUND 121.800 By ATC
RADAR 120.300
APPROACH 125.200

2 The minimum climb gradient required due to the airspace structure is 4.6% up to FL080 for SID ARDEL 4A, ARGUK 4A, NEBAR 4A, NEBES 4A, SORUS 4A, TIGMA 4A, TOMSU 4A. If unable to maintain the minimum climb gradient, inform ATC. Climb to LOM HI to FL080 or above - coordination with ATC not required.

WARNING:

- The minimum climb gradients required due to the airspace structure:
 - 4.0% up to FL060 for SID ARGUK 4Q;
 - 3.4% up to FL150 for SID IVADA 4A, when joining AWY A333;
 - 3.6% up to FL190 for SID IVADA 4A, when joining AWY B912;
 - 3.8% up to FL200 for SID IVADA 4A, when joining AWY B152.
- Turn before passing DER is PROHIBITED.
- There are close-in obstacles (trees) located to the right of take-off heading at DIST 100-162m from DER with MAX ELEV (15)/279'.

BEARINGS AND TRACKS ARE MAGNETIC
ALTITUDES IN FEET
HEIGHTS IN METRES
ELEVATIONS IN METRES AND FEET
DISTANCES IN KILOMETRES

Alt set: -QFE(QNH on req);
-mm(hPa on req).