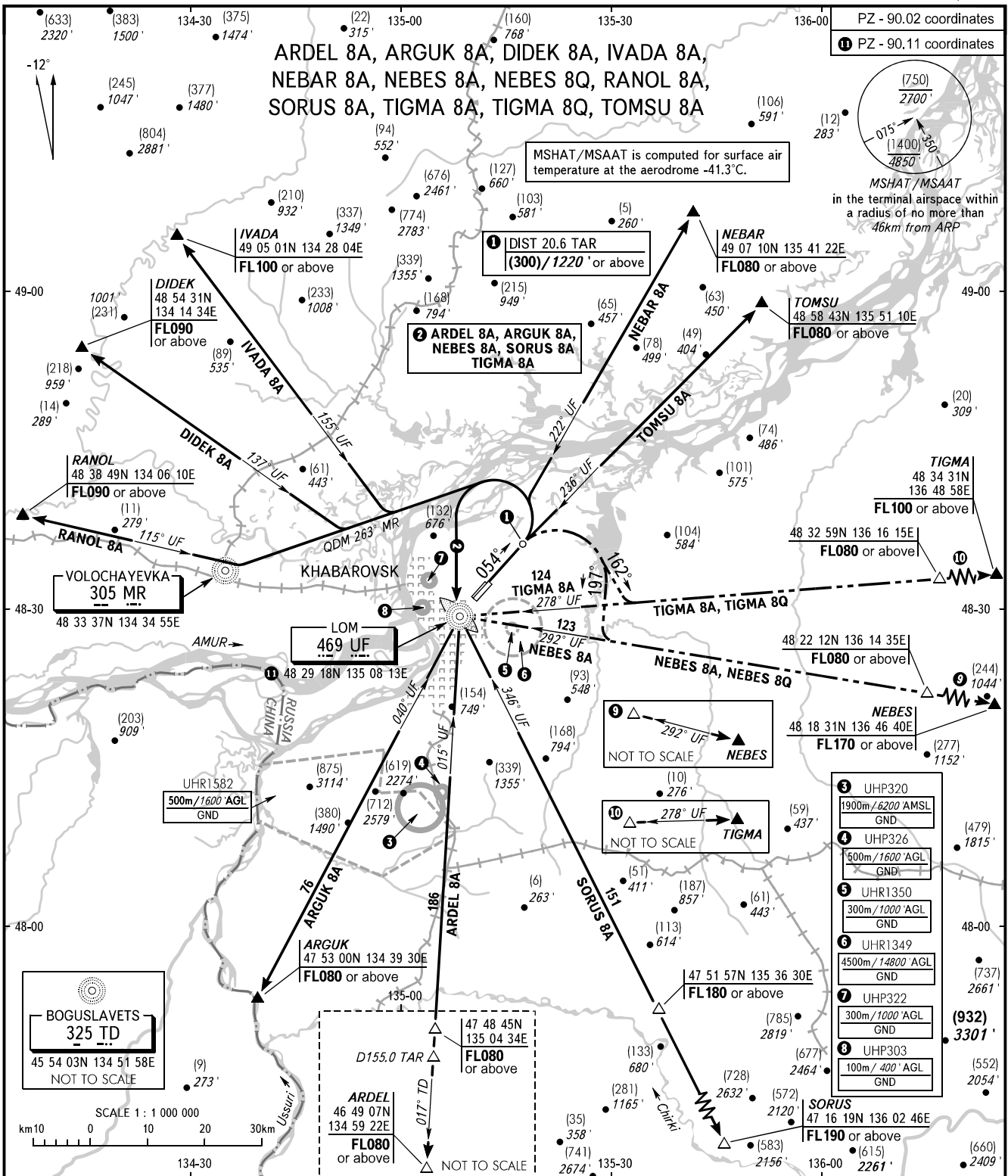


STANDARD DEPARTURE CHART  
INSTRUMENT (SID) - ICAO

TRANSITION HGT : (1400)  
TRANSITION ALT : 4850'

KHABAROVSK, RUSSIA  
NOVY  
RWY 05R, 05L



**2** The minimum climb gradient required due to the airspace structure is 4.7% up to FL080 for SID ARDEL 8A, ARGUK 8A, NEBES 8A, SORUS 8A, TIGMA 8A. If unable to maintain the minimum climb gradient, inform ATC. Climb to LOM UF to FL080 or above - coordination with ATC not required.

- WARNING:**
- The minimum climb gradients required due to the airspace structure:
    - 3.4% up to FL150 for SID IVADA 8A, when joining AWY A333;
    - 3.7% up to FL190 for SID IVADA 8A, when joining AWY B912;
    - 3.9% up to FL200 for SID IVADA 8A, when joining AWY B152.
  - Turn before passing DER is PROHIBITED.
  - There are close-in obstacles (trees) located to the left and to the right of take-off heading at DIST 112-224m from DER (RWY 05R) with MAX ELEV (18)/289'.

BEARINGS AND TRACKS ARE MAGNETIC  
ALTITUDES IN FEET  
HEIGHTS IN METRES  
ELEVATIONS IN METRES AND FEET  
DISTANCES IN KILOMETRES

Alt set: -QFE(QNH on req);  
-mm(hPa on req).

CHANGE: COM, MSHAT/MSAAT