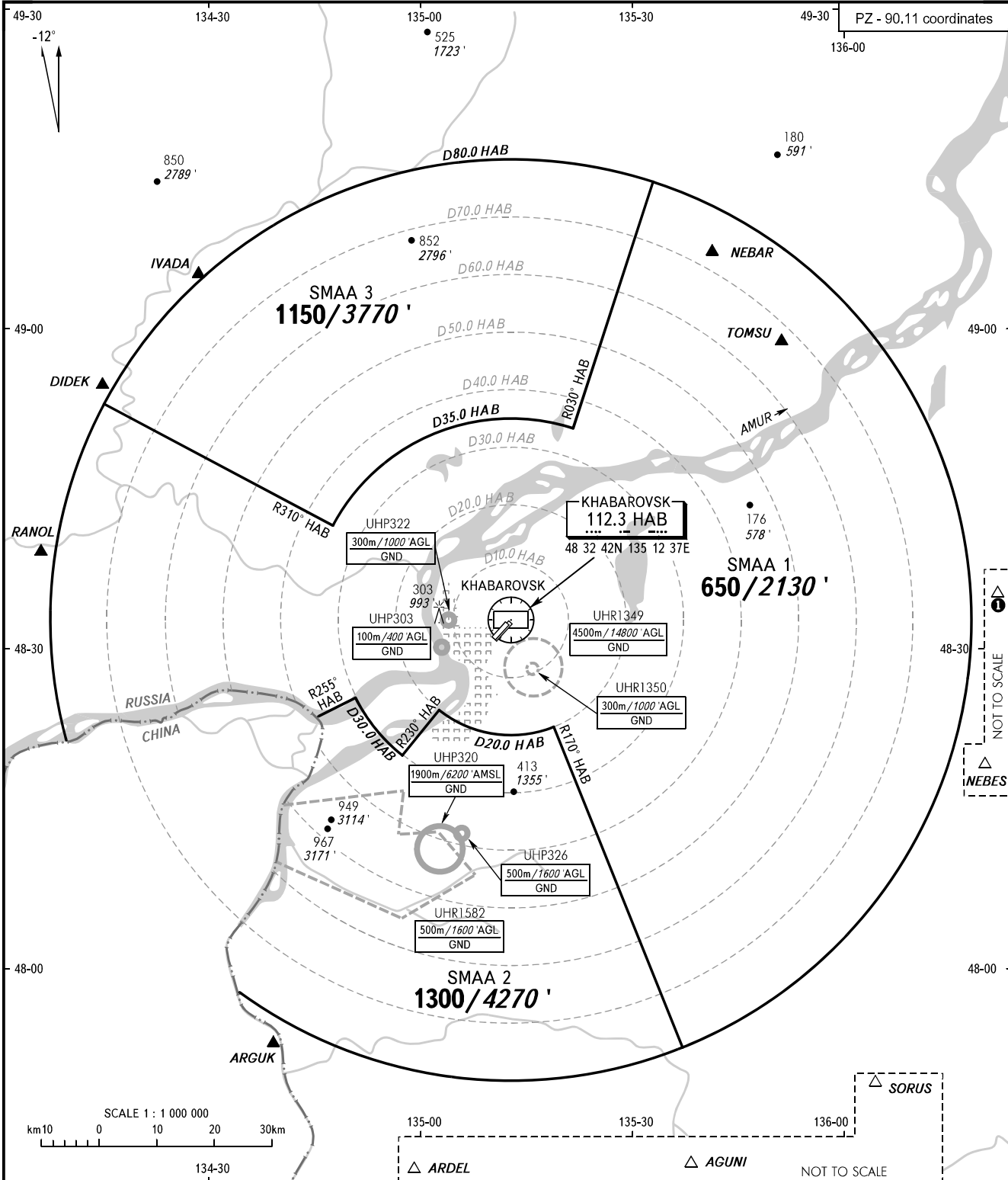


ATC SURVEILLANCE MINIMUM  
ALTITUDE CHART - ICAO

ELEV 74m/244'	TRANSITION HGT : (1400) TRANSITION ALT : 4850'
------------------	---------------------------------------------------

KHABAROVSK, RUSSIA

NOVY



APPROACH RADAR	125.200 120.300	<b>TIGMA</b>	<p><b>WARNING:</b></p> <ol style="list-style-type: none"> <li>The chart may only be used for cross-checking of altitudes assigned while the aircraft is identified under radar control.</li> <li>The altitude value of SMAA is calculated for ISA conditions (+15°C). When vectoring is executed at a temperature of 0°C or below, the minimum vectoring altitude must be corrected by altimeter temperature correction.</li> <li>COMMUNICATION FAILURE: In accordance with the procedures described in AIP.</li> <li>SMAA coordinates are on the reverse of this page.</li> </ol>
<p>BEARINGS AND TRACKS ARE MAGNETIC ALTITUDES IN FEET HEIGHTS IN METRES ELEVATIONS IN METRES AND FEET DISTANCES IN KILOMETRES</p>		<p>Alt set: -QFE(QNH on req); -mm(hPa on req).</p>	

CHANGE: SMAA 1, SMAA 2

**KHABAROVSK, RUSSIA**

**NOVY**

<b>SURVEILLANCE MINIMUM ALTITUDE AREAS</b>		
<b>IDENT</b>	<b>MNM ALT (m/ft)</b>	<b>LATERAL LIMITS (PZ-90.11 coordinates)</b>
SMAA 1	650 2130'	482150N 1340950E, then clockwise by arc of a circle radius of 80 km centred at 483242N 1351237E to 485242N 1341453E, 484131N 1344726E, then clockwise by arc of a circle radius of 35 km centred at 483242N 1351237E to 485040N 1352128E, 491343N 1353259E, then clockwise by arc of a circle radius of 80 km centred at 483242N 1351237E to 475236N 1353631E, 482241N 1351839E, then clockwise by arc of a circle radius of 20 km centred at 483242N 1351237E to 482410N 1350233E, 482000N 1345730E, then clockwise by arc of a circle radius of 30 km centred at 483242N 1351237E to 482522N 1345050E, 482255N 1344335E then along the state border to 482150N 1340950E.
SMAA 2	1300 4270'	482255N 1344335E, 482522N 1345050E, then anticlockwise by arc of a circle radius of 30 km centred at 483242N 1351237E to 482000N 1345730E, 482410N 1350233E, then anticlockwise by arc of a circle radius of 20 km centred at 483242N 1351237E to 482241N 1351839E, 475236N 1353631E, then clockwise by arc of a circle radius of 80 km centred at 483242N 1351237E to 475726N 1343519E, then along the state border to 482255N 1344335E.
SMAA 3	1150 3770'	485242N 1341453E, 484131N 1344726E, then clockwise by arc of a circle radius of 35 km centred at 483242N 1351237E to 485040N 1352128E, 491343N 1353259E, then anticlockwise by arc of a circle radius of 80 km centred at 483242N 1351237E to 485242N 1341453E.