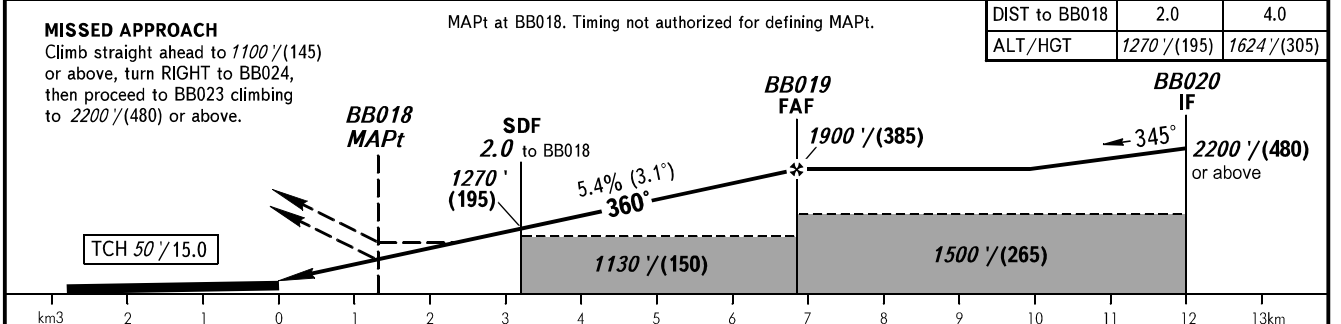
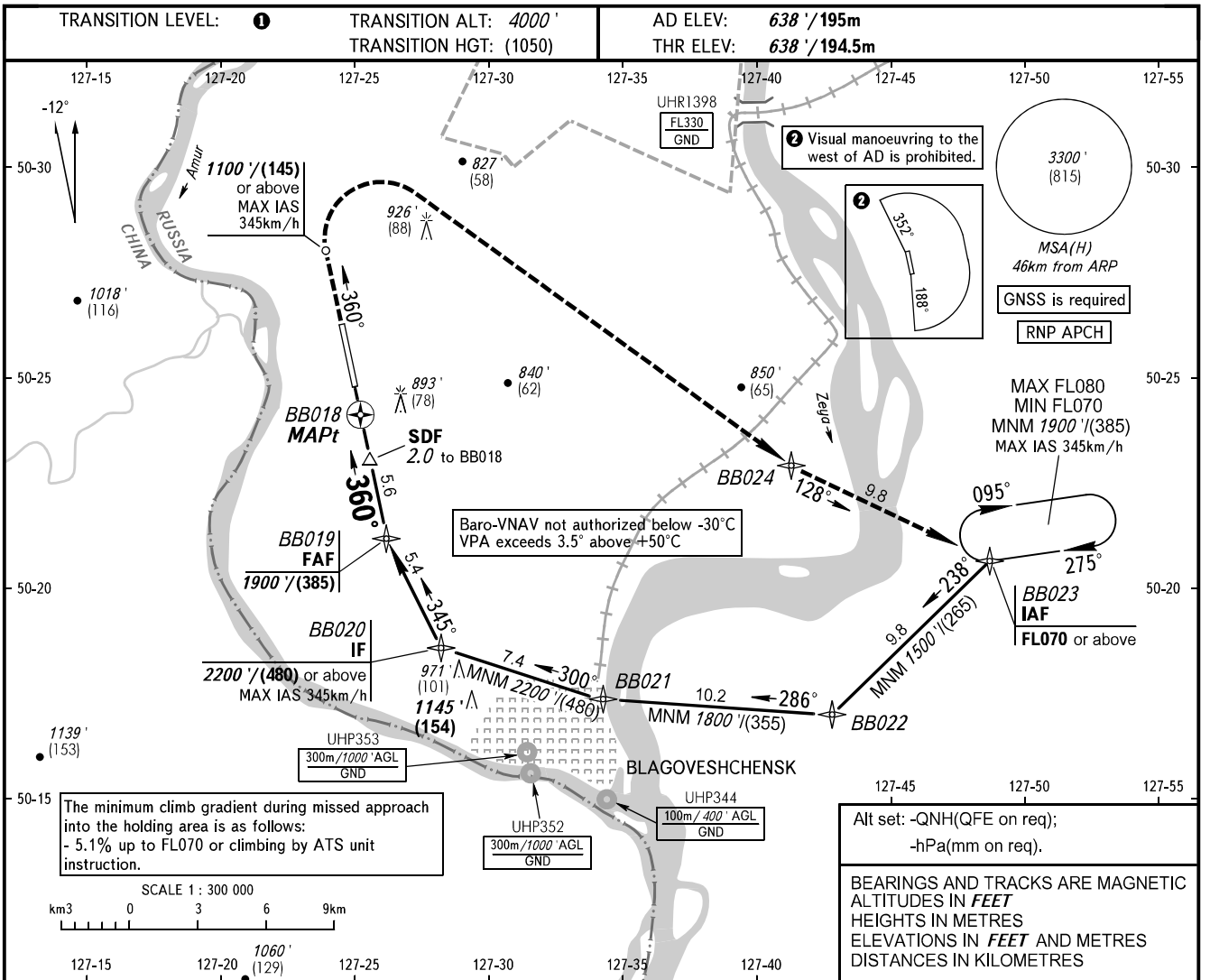


**INSTRUMENT  
APPROACH  
CHART - ICAO**

TOWER 127.200

**BLAGOVESHCHENSK, RUSSIA  
IGNATYEVO  
RNP RWY 36**



OCA(H)		A	B	C	D						
Straight-in Approach	<b>LNAV</b>	1070' (430') (135)	1070' (430') (135)	1070' (430') (135)	1070' (430') (135)						
	<b>LNAV VNAV</b>	2.5%	960' (320') (100)	970' (330') (105)	*980' (340') (105)	*990' (350') (110)					
		MNM climb GRAD for missed APCH	2.5%		1100' (470') (145)	1100' (470') (145)					
	5.0%**		980' (340') (105)	990' (350') (110)							
Circling		1190' (550') (170)	1190' (550') (170)	1330' (690') (215)	1330' (690') (215)						
GROUND SPEED		km/h	150	180	210	240	270	300	330	360	390
RATE OF DESCENT		m/s	2.3	2.7	3.2	3.6	4.1	4.5	5.0	5.4	5.9
RATE OF DESCENT		ft/min	443	531	620	709	797	886	974	1063	1152

\* is not AVBL, when UHR1398 is active.  
\*\* minimum climb gradient 5.0% - up to the altitude of turn on crosswind leg.

**1 TRANSITION LEVEL:**  
- FL050 when QNH is 1013 hPa (760mm mercury column) or above;  
- FL060 when QNH is 977 hPa (733mm mercury column) or above, but less than 1013 hPa (760mm mercury column);  
- FL070 when QNH is less than 977 hPa (733mm mercury column).

**CHANGE: Heading, HGT**