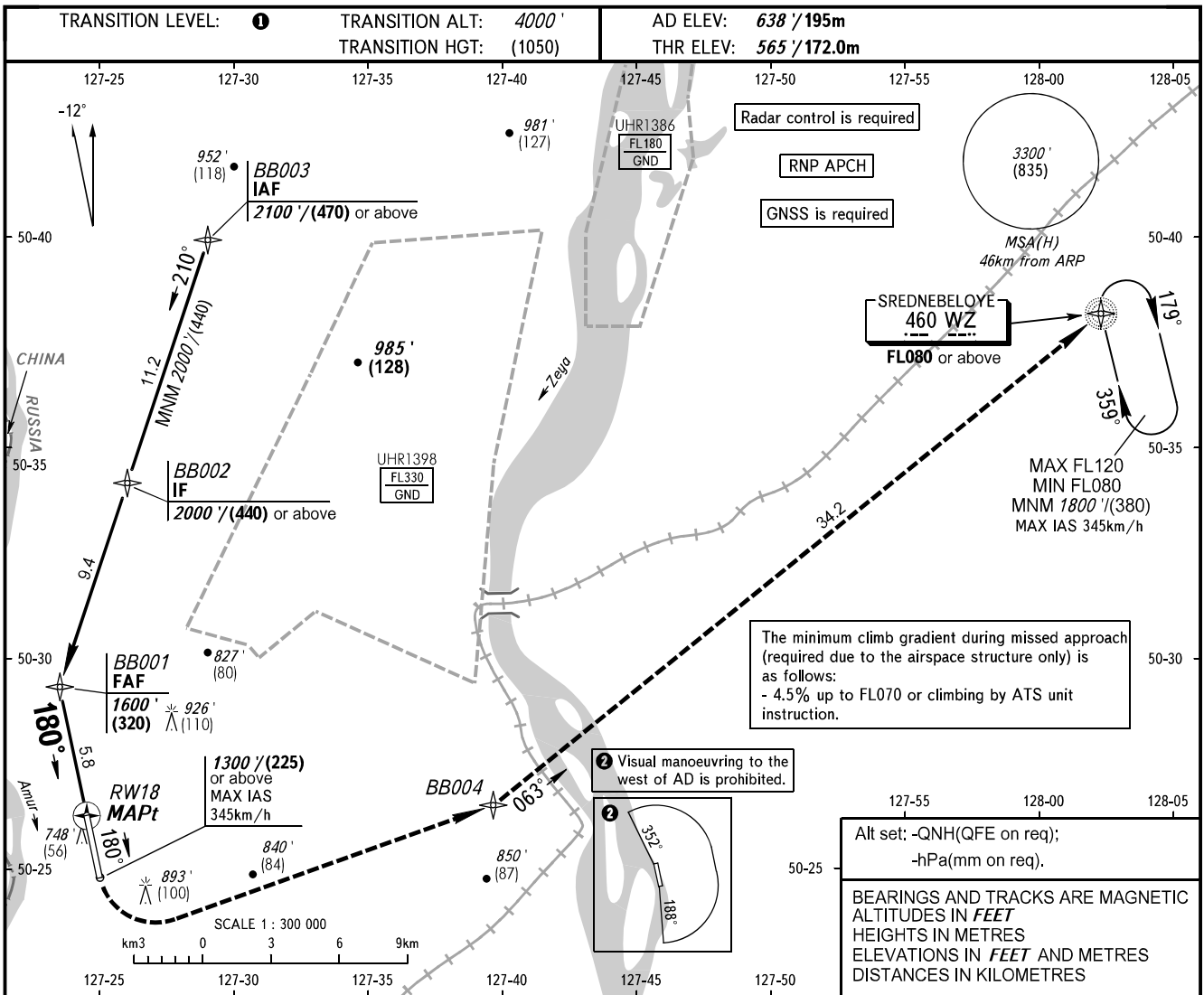


INSTRUMENT
APPROACH
CHART - ICAO

TOWER 127.200

BLAGOVESHCHENSK, RUSSIA
IGNATYEVO
RNP RWY 18



The minimum climb gradient during missed approach (required due to the airspace structure only) is as follows:
- 4.5% up to FL070 or climbing by ATS unit instruction.

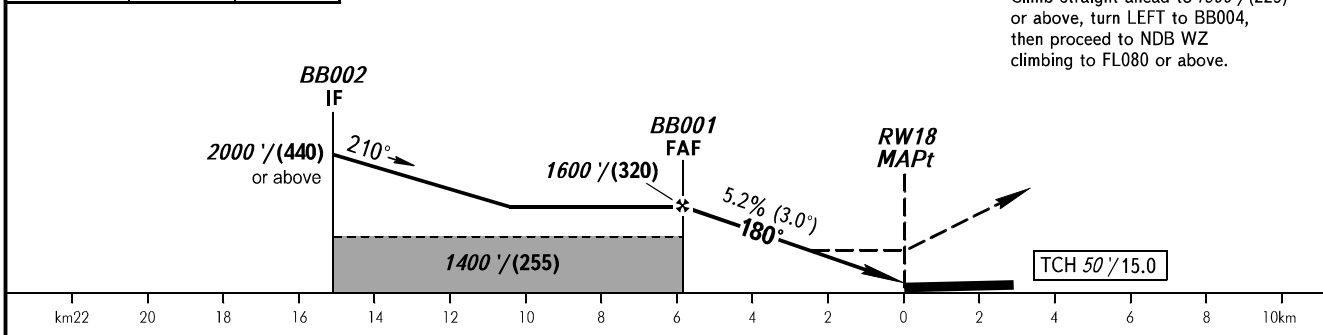
Visual manoeuvring to the west of AD is prohibited.

Alt set: -QNH(QFE on req);
-hPa(mm on req).

BEARINGS AND TRACKS ARE MAGNETIC
ALTITUDES IN FEET
HEIGHTS IN METRES
ELEVATIONS IN FEET AND METRES
DISTANCES IN KILOMETRES

DIST to RW18	4.0	2.0
ALT/HGT	1300' / (225)	960' / (125)

MISSED APPROACH
Climb straight ahead to 1300' / (225) or above, turn LEFT to BB004, then proceed to NDB WZ climbing to FL080 or above.



OCA(H)		A	B	C	D
Straight-in Approach	LNAV	940' (380') (115)	940' (380') (115)	940' (380') (115)	940' (380') (115)
	Circling	1190' (550') (195)	1190' (550') (195)	1330' (690') (235)	1330' (690') (235)

1 TRANSITION LEVEL:
- FL050 when QNH is 1013 hPa (760mm mercury column) or above;
- FL060 when QNH is 977 hPa (733mm mercury column) or above, but less than 1013 hPa (760mm mercury column);
- FL070 when QNH is less than 977 hPa (733mm mercury column).

GROUND SPEED	km/h	150	180	210	240	270	300	330	360	390
RATE OF DESCENT	m/s	2.2	2.6	3.0	3.5	3.9	4.3	4.8	5.2	5.6
RATE OF DESCENT	ft/min	427	512	597	682	768	853	938	1024	1109