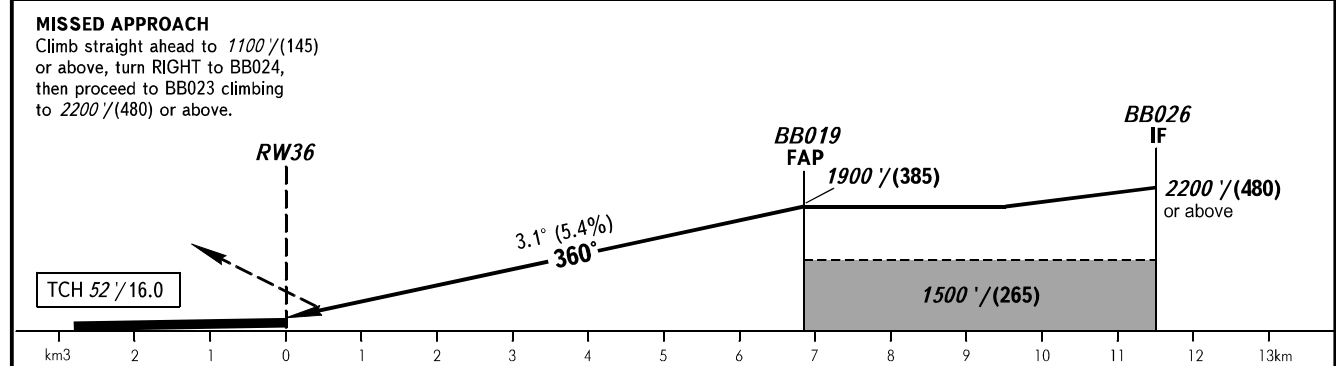
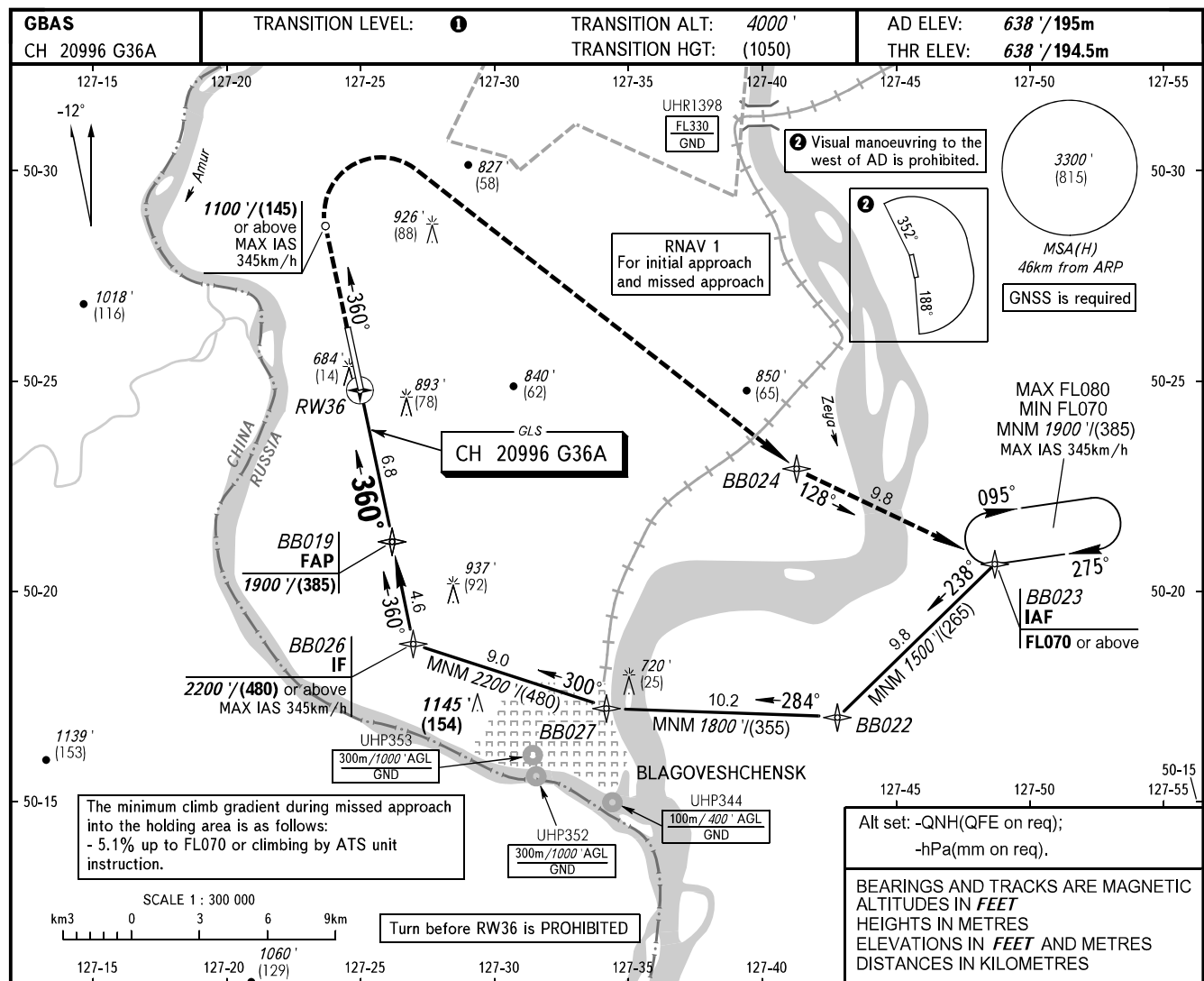


**INSTRUMENT
APPROACH
CHART - ICAO**

TOWER 127.200

**BLAGOVESHCHENSK, RUSSIA
IGNATYEVO
GLS RWY 36**



OCA(H)		A	B	C	D						
Straight-in Approach	CAT I MNM climb GRAD for missed APCH	2.5%	814' (176') (55)	824' (186') (60)	*834' (196') (60) *844' (205') (65)						
		2.5%			980' (342') (105) 990' (352') (110)						
		5.0%**			834' (196') (60) 844' (205') (65)						
Circling		1190' (550') (170)	1190' (550') (170)	1330' (690') (215)	1330' (690') (215)						
GROUND SPEED		km/h	150	180	210	240	270	300	330	360	390
RATE OF DESCENT		m/s	2.3	2.7	3.2	3.6	4.1	4.5	5.0	5.4	5.9
RATE OF DESCENT		ft/min	443	531	620	709	797	886	974	1063	1152

* is not AVBL, when UHR1398 is active.
** minimum climb gradient 5.0% - up to the altitude of turn on crosswind leg.

① TRANSITION LEVEL:
- FL050 when QNH is 1013 hPa (760mm mercury column) or above;
- FL060 when QNH is 977 hPa (733mm mercury column) or above, but less than 1013 hPa (760mm mercury column);
- FL070 when QNH is less than 977 hPa (733mm mercury column).

CHANGE: Heading, HGT