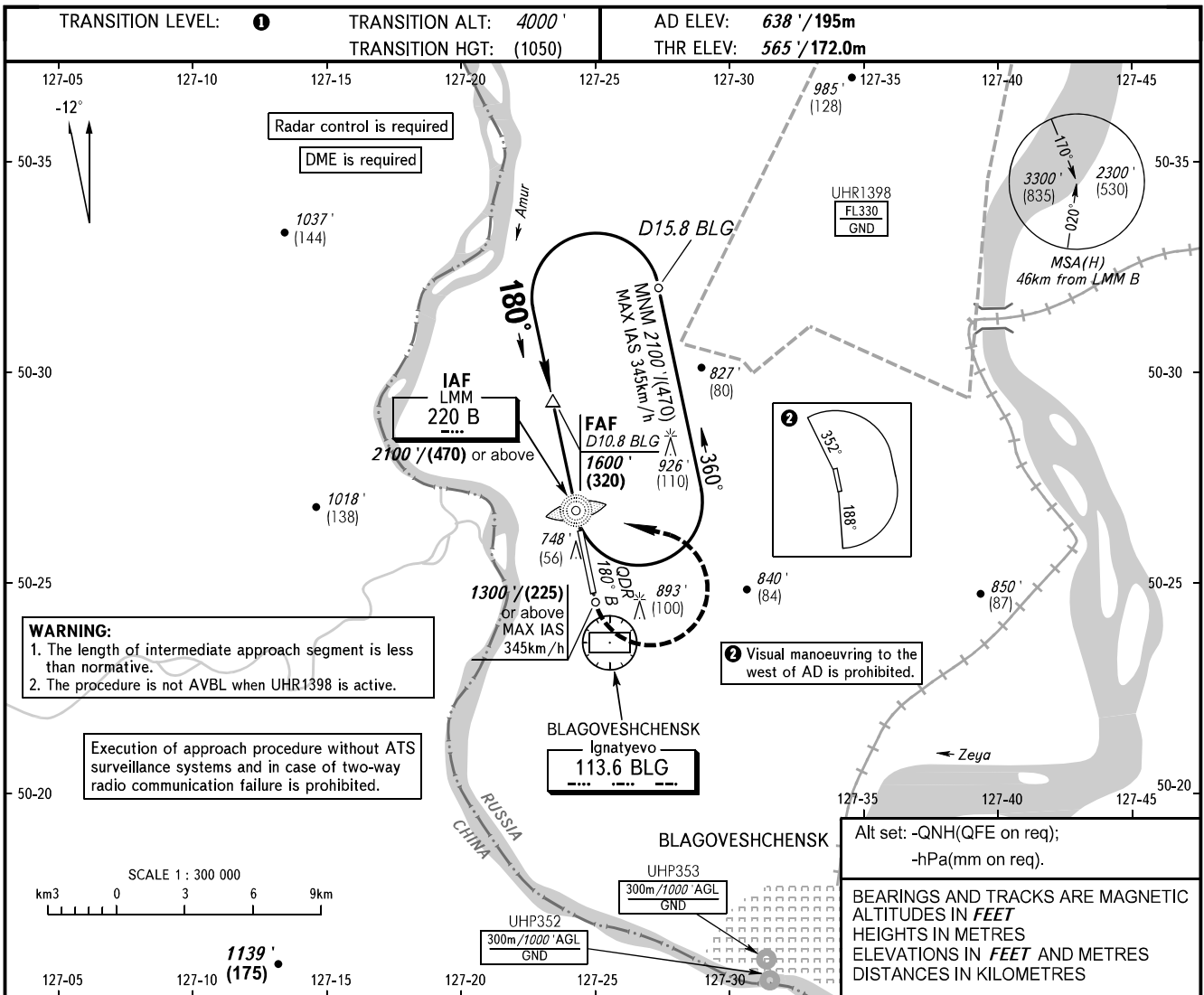


INSTRUMENT
APPROACH
CHART - ICAO

TOWER 127.200

BLAGOVESHCHENSK, RUSSIA
IGNATYEVO
NDB Z RWY 18

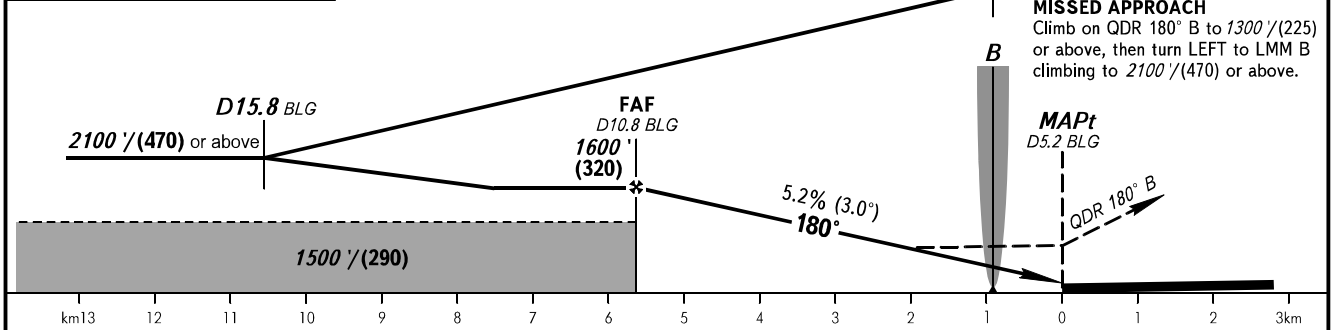


WARNING:
1. The length of intermediate approach segment is less than normative.
2. The procedure is not AVBL when UHR1398 is active.

Execution of approach procedure without ATS surveillance systems and in case of two-way radio communication failure is prohibited.

Visual manoeuvring to the west of AD is prohibited.

DME BLG	10.0	8.0	MAPt at D5.2 BLG. Timing not authorized for defining MAPt.
ALT/HGT	1449' / (270)	1108' / (170)	



OCA(H)		A	B	C	D	1 TRANSITION LEVEL: - FL050 when QNH is 1013 hPa (760mm mercury column) or above; - FL060 when QNH is 977 hPa (733mm mercury column) or above, but less than 1013 hPa (760mm mercury column); - FL070 when QNH is less than 977 hPa (733mm mercury column). WARNING Turn before passing MAPt is PROHIBITED.				
Straight-in		960' (390') (125)	960' (390') (125)	960' (390') (125)	960' (390') (125)					
Approach										
Circling		1190' (550') (195)	1190' (550') (195)	1330' (690') (235)	1330' (690') (235)					
GROUND SPEED	km/h	150	180	210	240	270	300	330	360	390
RATE OF DESCENT	m/s	2.2	2.6	3.0	3.5	3.9	4.3	4.8	5.2	5.6
RATE OF DESCENT	ft/min	427	512	597	682	768	853	938	1024	1109

CHANGE: Heading, HGT