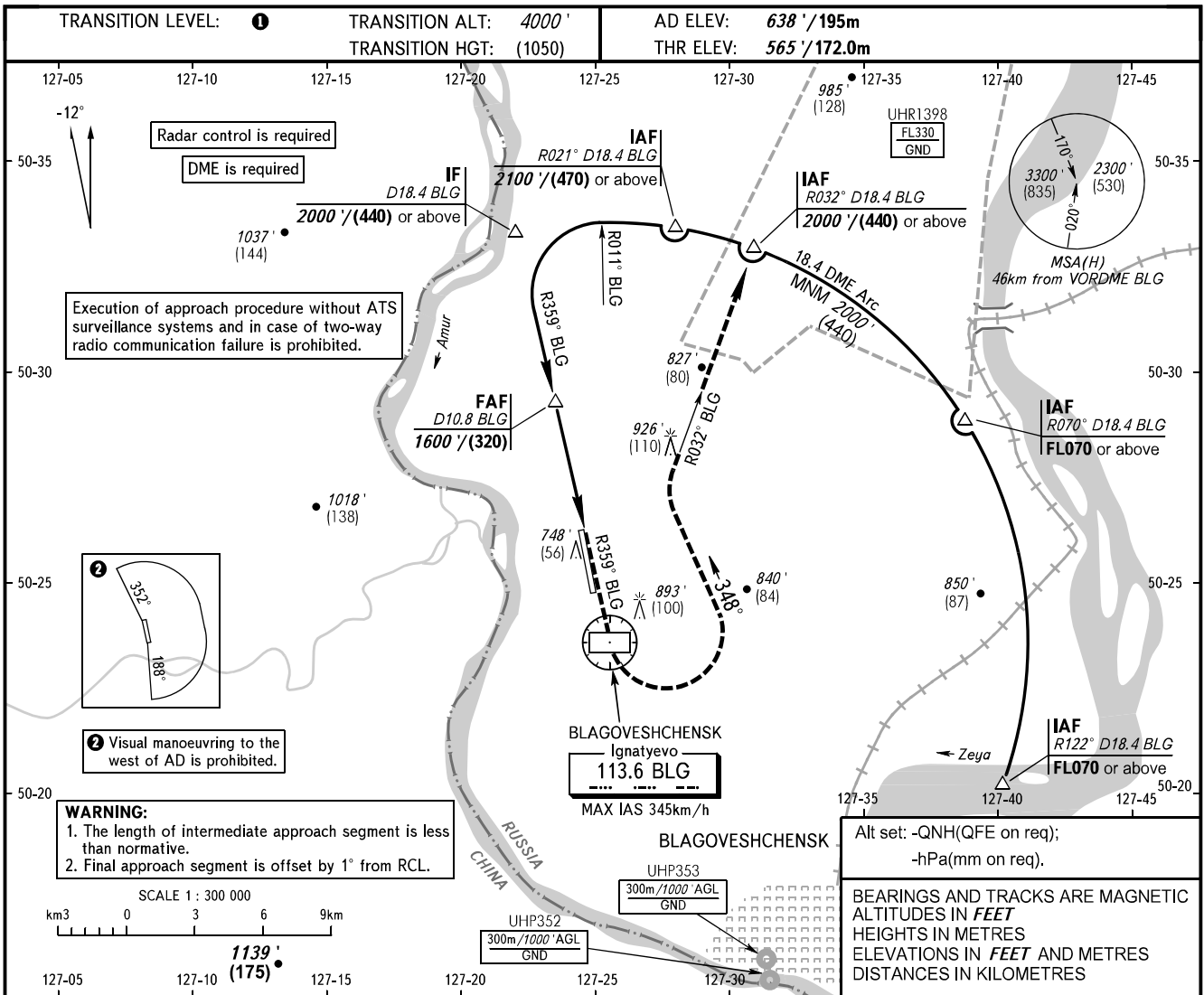


INSTRUMENT  
APPROACH  
CHART - ICAO

TOWER 127.200

BLAGOVESHCHENSK, RUSSIA  
IGNATYEVO  
VOR RWY 18



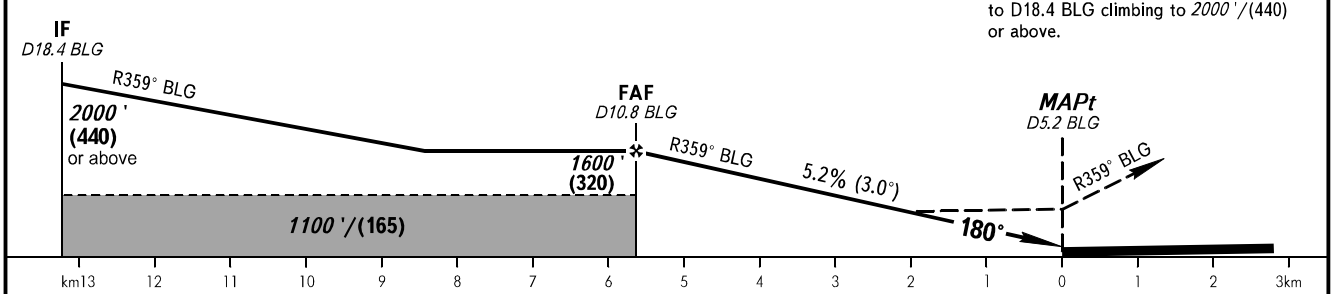
DME BLG	10.0	8.0
ALT/HGT	1449'/(270)	1108'/(170)

MAPt at D5.2 BLG. Timing not authorized for defining MAPt.

Alt set: -QNH(QFE on req);  
-hPa(mm on req).

BEARINGS AND TRACKS ARE MAGNETIC  
ALTITUDES IN FEET  
HEIGHTS IN METRES  
ELEVATIONS IN FEET AND METRES  
DISTANCES IN KILOMETRES

**MISSED APPROACH**  
Climb on R359° BLG to VORDME BLG, turn LEFT onto track 348° to intercept R032° BLG, then proceed on R032° BLG to D18.4 BLG climbing to 2000'/(440) or above.



OCA(H)		A	B	C	D						
Straight-in	Approach	1000' (430') (135)	1000' (430') (135)	1000' (430') (135)	1000' (430') (135)						
	Circling	1190' (550') (195)	1190' (550') (195)	1330' (690') (235)	1330' (690') (235)						
GROUND SPEED		km/h	150	180	210	240	270	300	330	360	390
RATE OF DESCENT		m/s	2.2	2.6	3.0	3.5	3.9	4.3	4.8	5.2	5.6
RATE OF DESCENT		ft/min	427	512	597	682	768	853	938	1024	1109

**1** TRANSITION LEVEL:  
- FL050 when QNH is 1013 hPa (760mm mercury column) or above;  
- FL060 when QNH is 977 hPa (733mm mercury column) or above, but less than 1013 hPa (760mm mercury column);  
- FL070 when QNH is less than 977 hPa (733mm mercury column).

**WARNING**  
The procedure is not AVBL when UHR1398 is active.

CHANGE: Heading, HGT