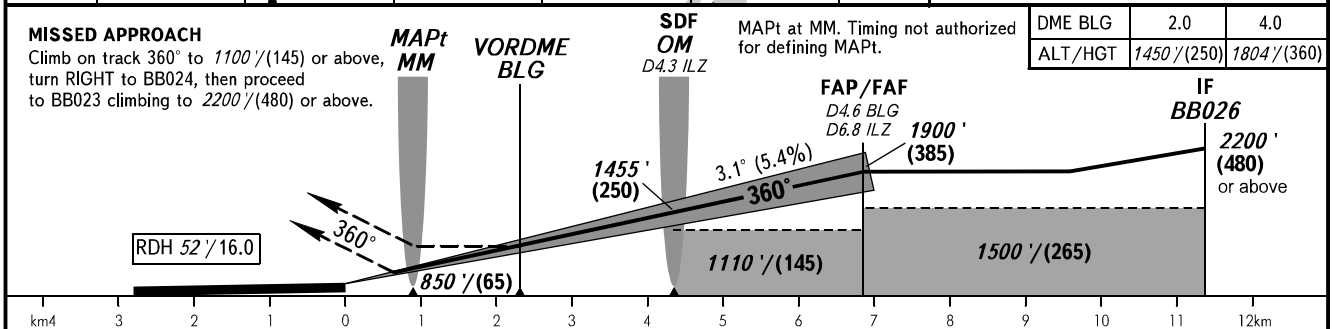
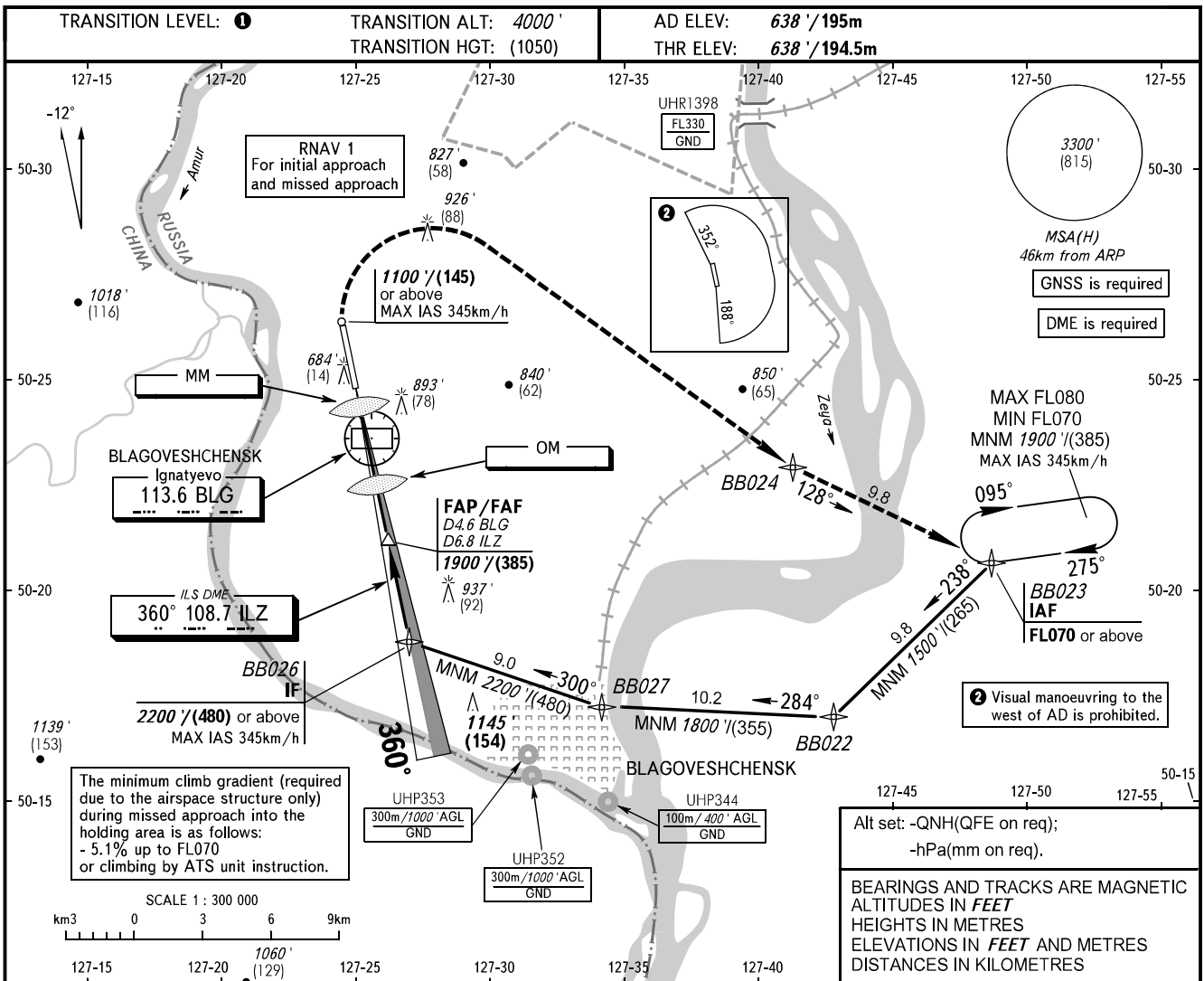


**INSTRUMENT
APPROACH
CHART - ICAO**

TOWER 127.200

**BLAGOVESHCHENSK, RUSSIA
IGNATYEVO
ILS Z, LOC Z RWY 36**



		OCA(H)													
		A	B	C	D										
Straight-in Approach	CAT I	MNM climb GRAD for missed APCH	2.5%	814' (176') (55)	824' (186') (60)	*834' (196') (60)	*844' (205') (65)	* is not AVBL, when UHR1398 is active. ** minimum climb gradient 5.0% - up to the altitude of turn on crosswind leg.							
			2.5%			980' (342') (105)	990' (352') (110)	1. TRANSITION LEVEL: - FL050 when QNH is 1013 hPa (760mm mercury column) or above; - FL060 when QNH is 977 hPa (733mm mercury column) or above, but less than 1013 hPa (760mm mercury column); - FL070 when QNH is less than 977 hPa (733mm mercury column).							
		5.0%**			834' (196') (60)	844' (205') (65)	2. WARNING: 1. Turn before passing MM is PROHIBITED. 2. Zero range of ILS DME ILZ is indicated at RWY 36 THR.								
			LOC with SDF	1080' (440') (135)	1080' (440') (135)	1080' (440') (135)	1080' (440') (135)								
		LOC WO SDF	1110' (470') (145)	1110' (470') (145)	1110' (470') (145)	1110' (470') (145)									
		Circling	1190' (550') (170)	1190' (550') (170)	1330' (690') (215)	1330' (690') (215)									
GROUND SPEED		km/h	150	180	210	240	270	300	330	360	390				
RATE OF DESCENT		m/s	2.3	2.7	3.2	3.6	4.1	4.5	5.0	5.4	5.9				
RATE OF DESCENT		ft/min	443	531	620	709	797	886	974	1063	1152				