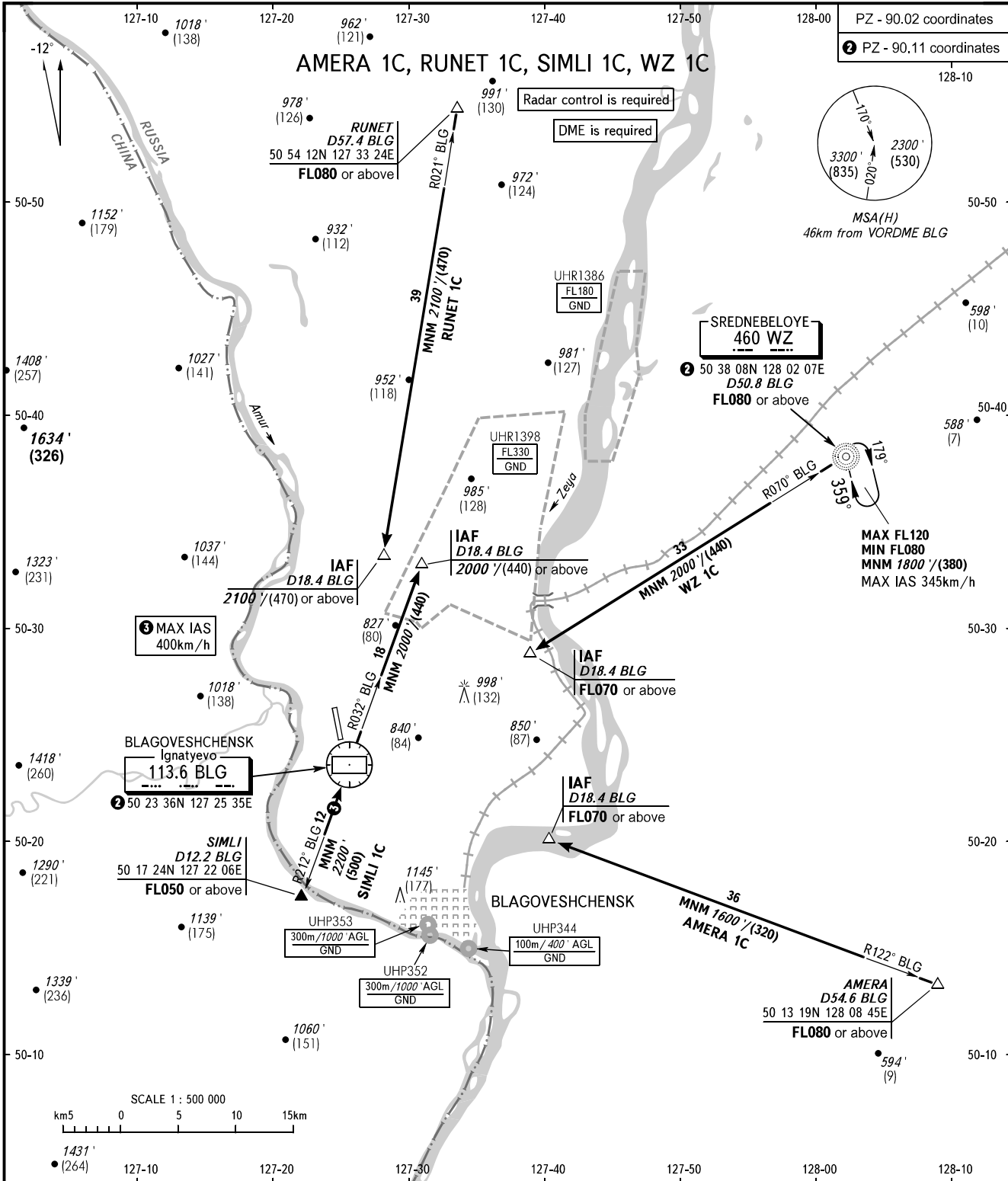


STANDARD ARRIVAL CHART
INSTRUMENT (STAR) - ICAO

BLAGOVESHCHENSK, RUSSIA
IGNATYEVO
RWY 18

TRANSITION
LEVEL: ①



TOWER 127.200

- ① TRANSITION LEVEL:
- FL050 when QNH is 1013 hPa (760mm mercury column) or above;
 - FL060 when QNH is 977 hPa (733mm mercury column) or above, but less than 1013 hPa (760mm mercury column);
 - FL070 when QNH is less than 977 hPa (733mm mercury column).

WARNING:

- Utilization of routes without ATS surveillance systems and in case of two-way radio communication failure is prohibited.
- When restricted area UHR1398 is active, utilization of all routes, except AMERA 1C, by coordination with ATS unit.
- Holding area is AVBL by coordination with ATS unit.

BEARINGS AND TRACKS ARE MAGNETIC
ALTITUDES IN FEET AND METRES
ELEVATIONS IN FEET AND METRES
DISTANCES IN KILOMETRES

Alt set: -QNH(QFE on req);
-hPa(mm on req).

CHANGE: Heading, HGT