

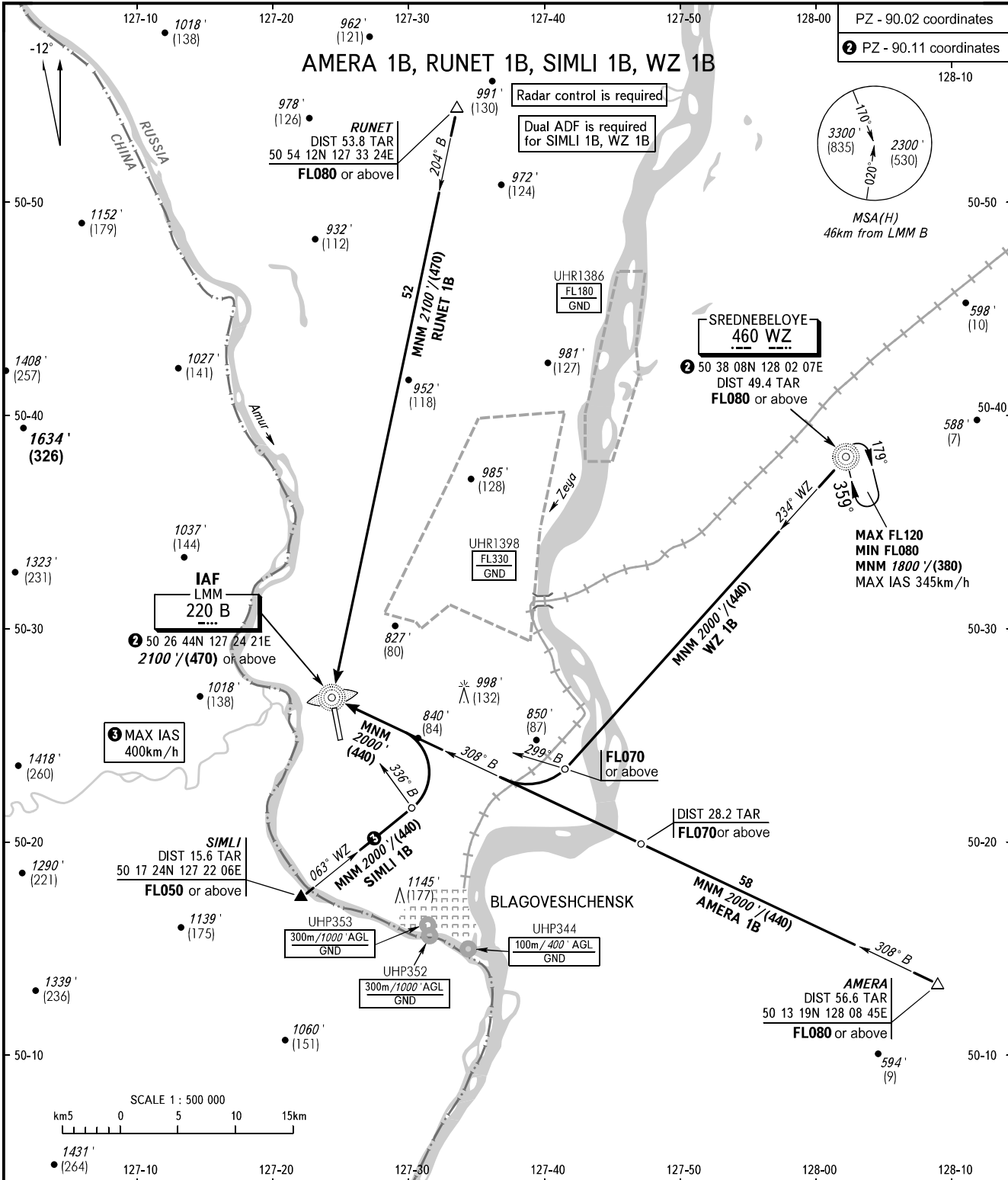
STANDARD ARRIVAL CHART  
INSTRUMENT (STAR) - ICAO

BLAGOVESHCHENSK, RUSSIA

IGNATYEVO

RWY 18

TRANSITION  
LEVEL: 1



TOWER 127.200

- 1 TRANSITION LEVEL:**
- FL050 when QNH is 1013 hPa (760mm mercury column) or above;
  - FL060 when QNH is 977 hPa (733mm mercury column) or above, but less than 1013 hPa (760mm mercury column);
  - FL070 when QNH is less than 977 hPa (733mm mercury column).

**WARNING:**

- Utilization of routes without ATS surveillance systems and in case of two-way radio communication failure is prohibited.
- When restricted area UHR1398 is active, utilization of all routes by coordination with ATS unit.
- Holding area is AVBL by coordination with ATS unit.

BEARINGS AND TRACKS ARE MAGNETIC  
ALTITUDES IN FEET AND METRES  
ELEVATIONS IN FEET AND METRES  
DISTANCES IN KILOMETRES

Alt set: -QNH(QFE on req);  
-hPa(mm on req).

CHANGE: MNM holding area