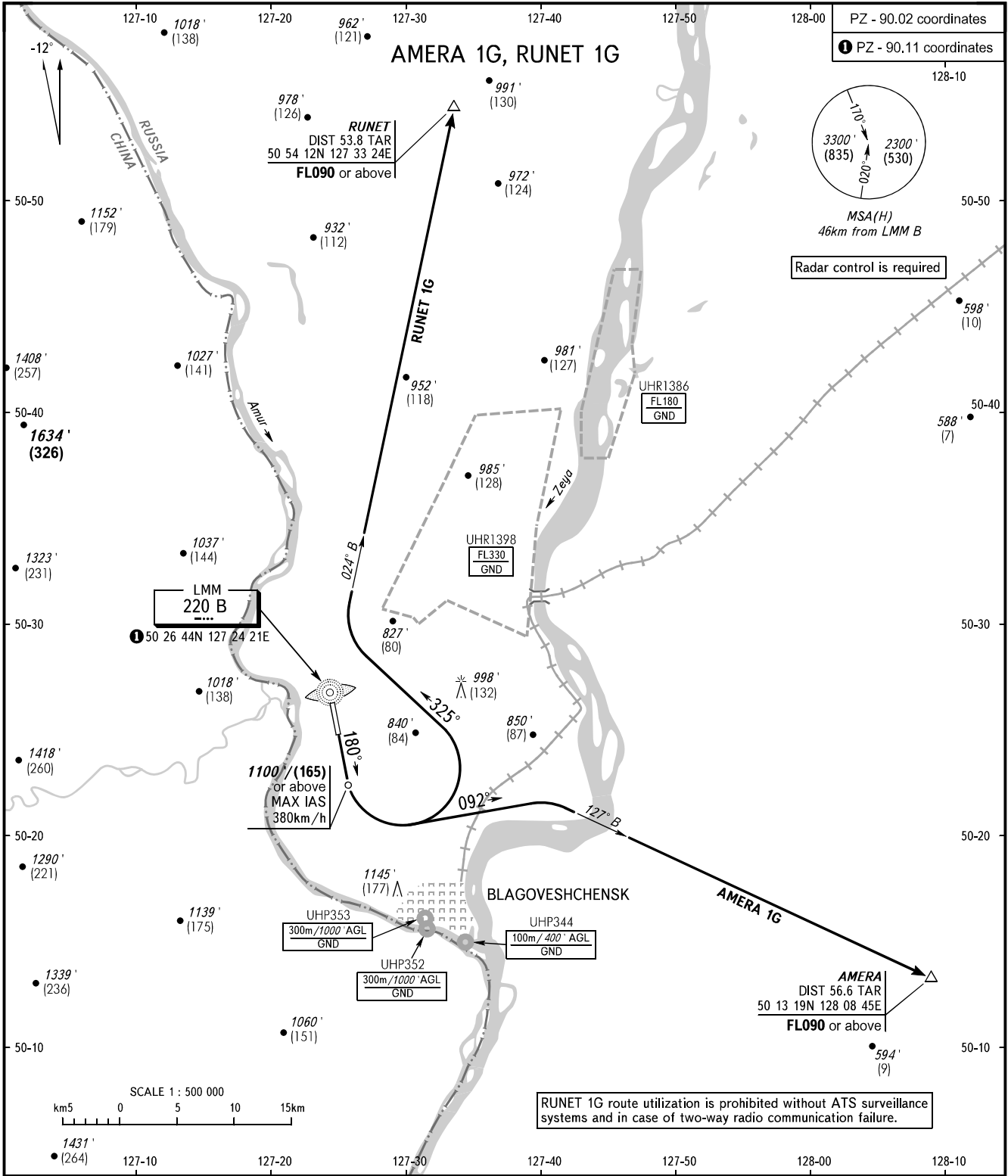


STANDARD DEPARTURE CHART  
INSTRUMENT (SID) - ICAO

BLAGOVESHCHENSK, RUSSIA  
IGNATYEVO  
RWY 18

TRANSITION ALT: 4000'  
TRANSITION HGT: (1050)



RUNET 1G route utilization is prohibited without ATS surveillance systems and in case of two-way radio communication failure.

- WARNING:**
1. When restricted area UHR1398 is active, utilization of RUNET 1G route by coordination with ATS unit.
  2. Turn before passing DER is PROHIBITED.

The minimum climb gradients (required due to the airspace structure only) are as follows:  
- 4.8% for AMERA 1G up to FL070,  
- 3.4% for RUNET 1G up to FL090  
or climbing by ATS unit instruction.

TOWER 127.200

Alt set: -QNH(QFE on req);  
-hPa(mm on req).

BEARINGS AND TRACKS ARE MAGNETIC  
ALTITUDES IN FEET AND METRES  
ELEVATIONS IN FEET AND METRES  
DISTANCES IN KILOMETRES

CHANGE: Heading, HGT