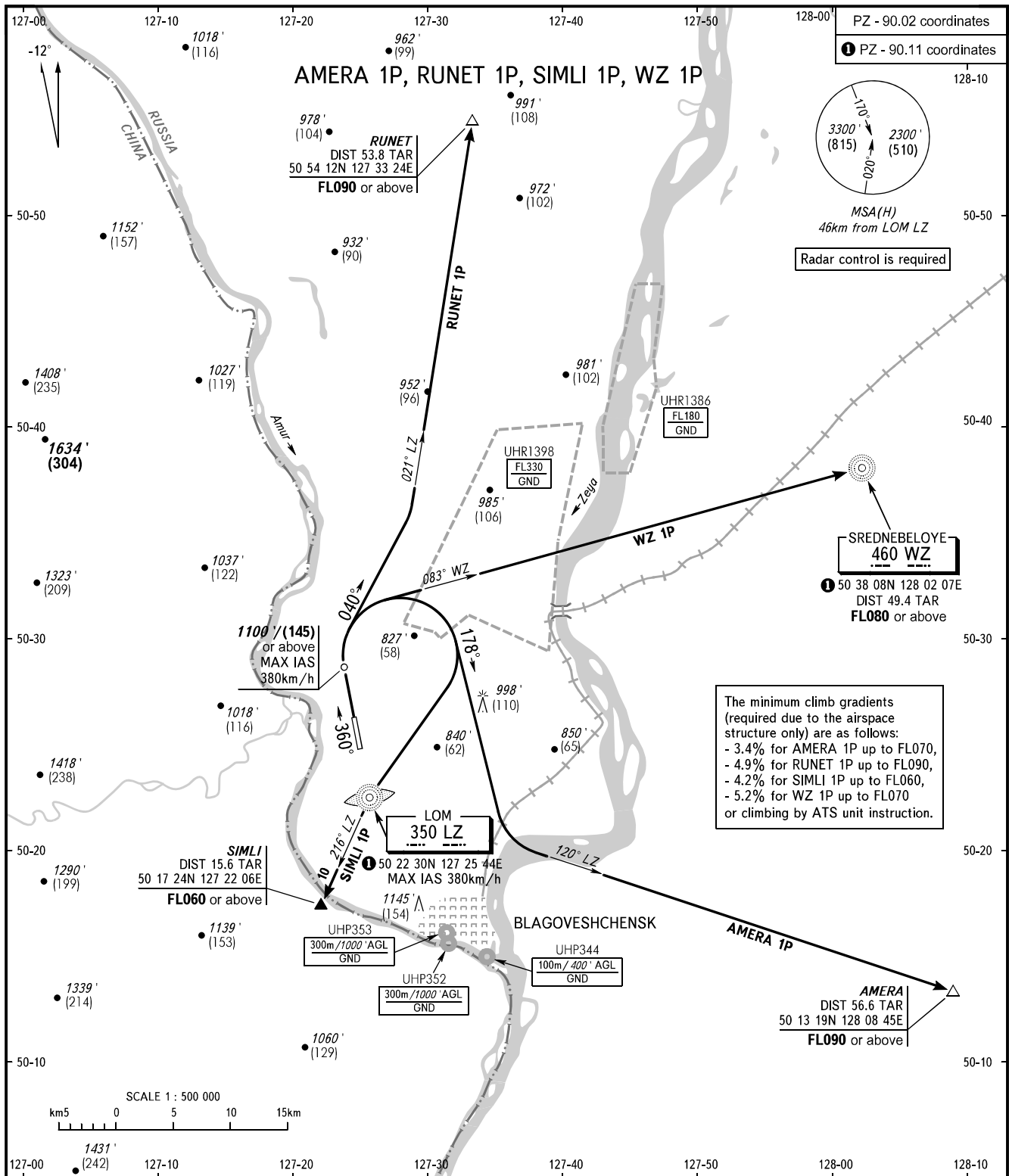


STANDARD DEPARTURE CHART
INSTRUMENT (SID) - ICAO

TRANSITION ALT: **4000'**
TRANSITION HGT: **(1050)**

BLAGOVESHCHENSK, RUSSIA
IGNATYEVO
RWY 36



The minimum climb gradients (required due to the airspace structure only) are as follows:
 - 3.4% for AMERA 1P up to FL070,
 - 4.9% for RUNET 1P up to FL090,
 - 4.2% for SIMLI 1P up to FL060,
 - 5.2% for WZ 1P up to FL070
 or climbing by ATS unit instruction.

TOWER **127.200**

WARNING:

- When restricted area UHR1398 is active, utilization of all routes by coordination with ATS unit.
- Turn before passing DER is PROHIBITED for SIMLI 1P.
- AMERA 1P: Radar vectoring along the track within 10km after turn execution is not provided - track maintaining control is carried out under ATS unit management.

BEARINGS AND TRACKS ARE MAGNETIC
ALTITUDES IN **FEET** AND METRES
ELEVATIONS IN **FEET** AND METRES
DISTANCES IN KILOMETRES

Alt set: -QNH(QFE on req);
-hPa(mm on req).

CHANGE: Heading, HGT