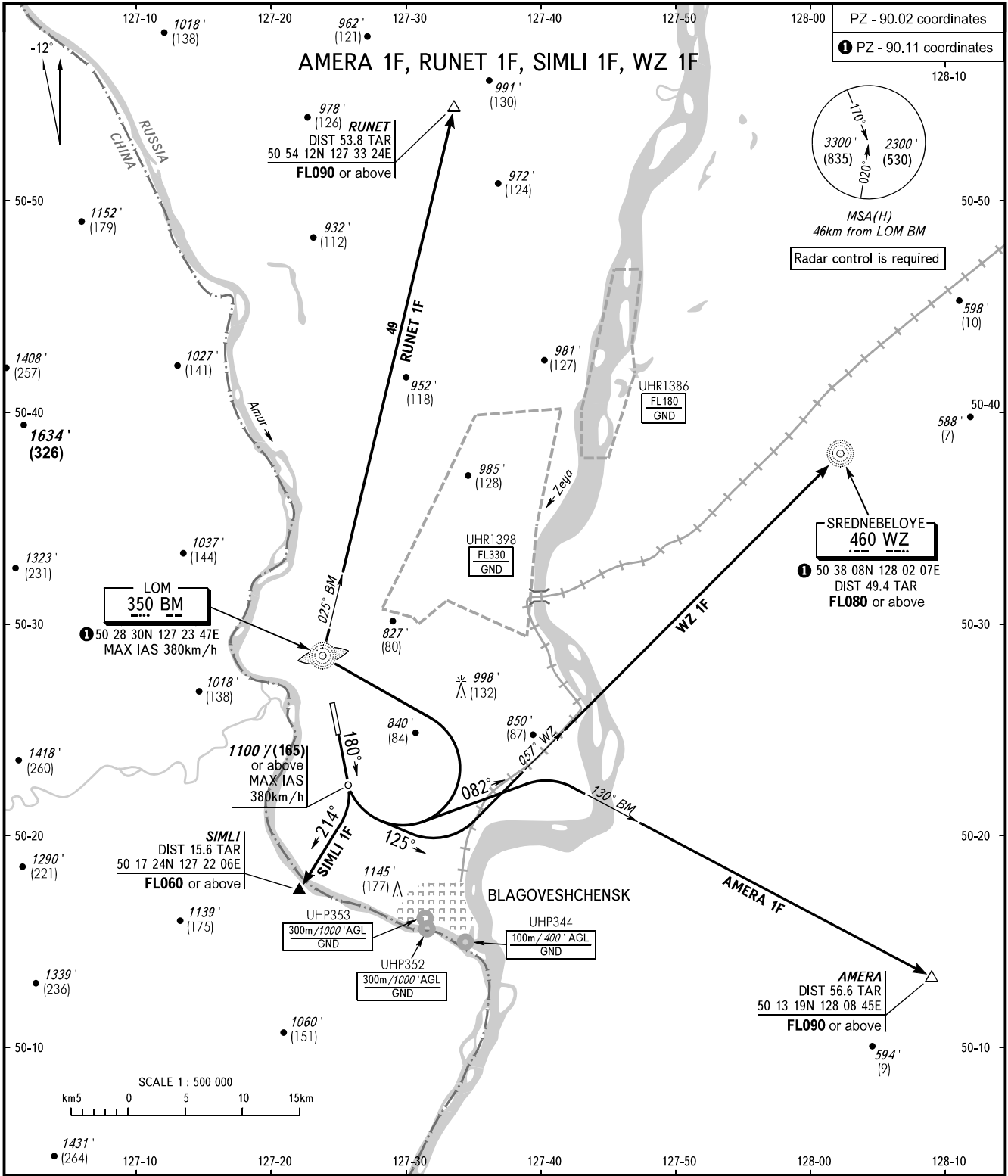


STANDARD DEPARTURE CHART
INSTRUMENT (SID) - ICAO

BLAGOVESHCHENSK, RUSSIA
IGNATYEVO
RWY 18

TRANSITION ALT: 4000'
TRANSITION HGT: (1050)



TOWER 127.200

WARNING:

1. RUNET 1F route utilization is prohibited without ATS surveillance systems and in case of two-way radio communication failure.
2. Turn before passing DER is PROHIBITED.

The minimum climb gradients (required due to the airspace structure only) are as follows:

- 11.4% for SIMLI 1F up to FL060,
- 5.1% for AMERA 1F up to FL070,
- 4.5% for WZ 1F up to FL070

or climbing by ATS unit instruction.

BEARINGS AND TRACKS ARE MAGNETIC
ALTITUDES IN FEET AND METRES
ELEVATIONS IN FEET AND METRES
DISTANCES IN KILOMETRES

Alt set: -QNH(QFE on req);
-hPa(mm on req).

CHANGE: Heading, HGT