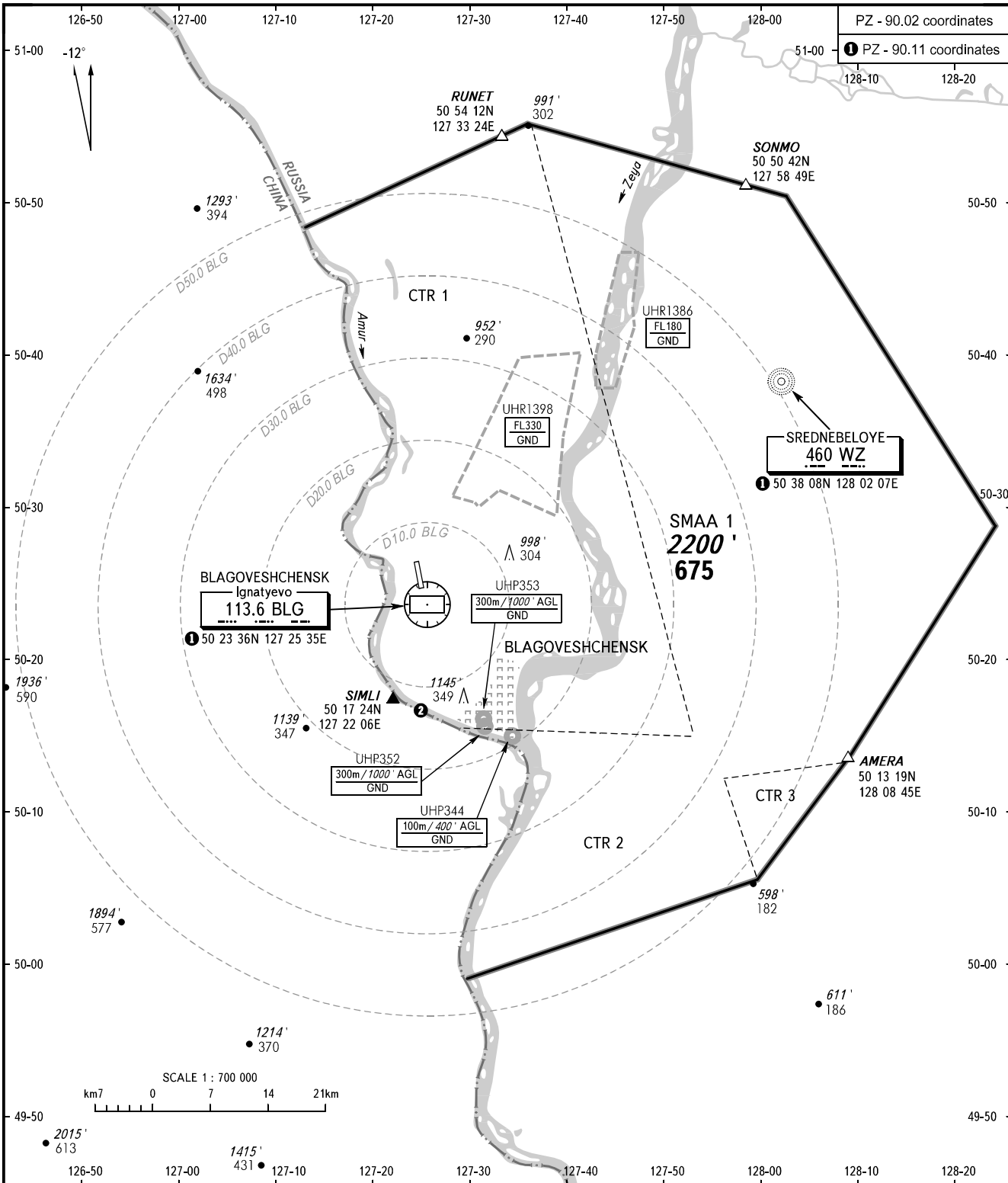


ATC SURVEILLANCE MINIMUM
ALTITUDE CHART - ICAO

ELEV 638 / 195m	TRANSITION ALT: 4000' TRANSITION HGT: (1050)
--------------------	---

BLAGOVESHCHENSK, RUSSIA

IGNATYEVO



<p>TOWER 127.200</p> <p>COMMUNICATION FAILURE: In accordance with the procedures described in AIP.</p> <p>BEARINGS AND TRACKS ARE MAGNETIC ALTITUDES, HEIGHTS IN FEET AND METRES ELEVATIONS IN FEET AND METRES DISTANCES IN KILOMETRES</p>	<p>WARNING:</p> <ol style="list-style-type: none"> 1. The chart may only be used for cross-checking of altitudes assigned while the aircraft is under radar control. 2. When vectoring is carried out under low-temperature conditions, minimum vectoring altitudes for IFR flight must be corrected by altimeter temperature correction. <p>② TMA, CTR boundaries coincide with the state border of the Russian Federation.</p>
---	---

CHANGE: ALT

BLAGOVESHCHENSK, RUSSIA
IGNATYEVO

SURVEILLANCE MINIMUM ALTITUDE AREAS		
IDENT	MNM ALT (ft/m)	LATERAL LIMITS (PZ-90.11 coordinates)
SMAA 1	2200' 675	505500N 1273600E - 505000N 1280230E - 502830N 1282400E - 501319N 1280845E - 501254N 1280828E - 500504N 1275929E - 495850N 1272950E, then along the state border to 504800N 1271300E - 505500N 1273600E.