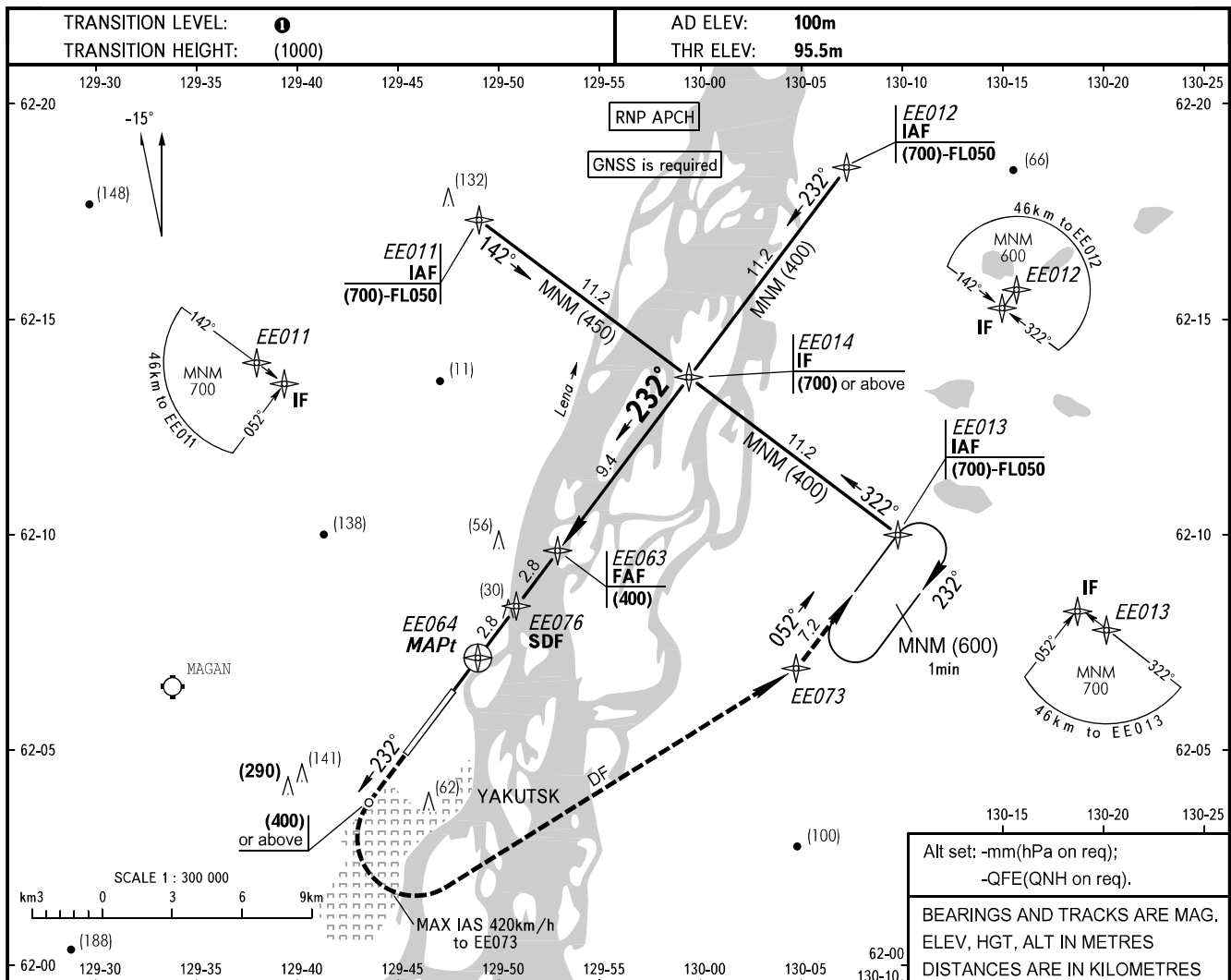


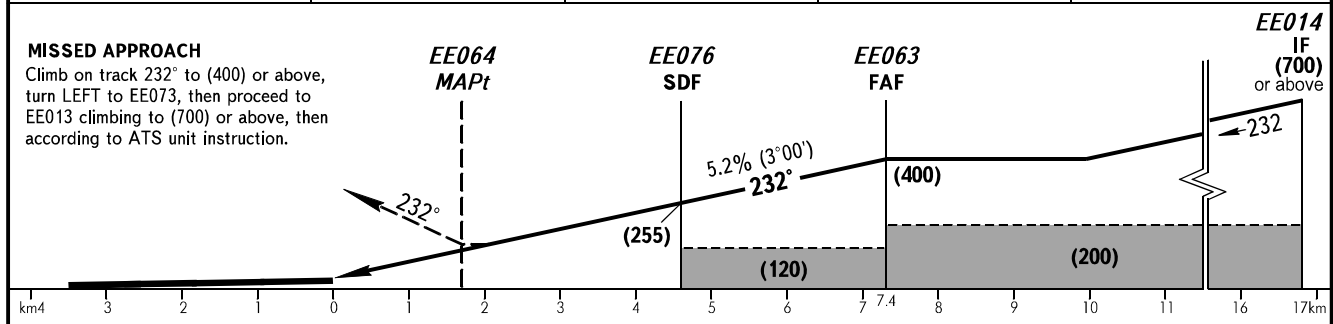
INSTRUMENT  
APPROACH  
CHART - ICAO

APPROACH	129.300
RADAR	120.300
TOWER	120.000

YAKUTSK, RUSSIA  
YAKUTSK  
RNAV (GNSS) RWY 23L



DIST TO RWY23L	2.0	4.0	6.0	7.4
HGT 3.0° APCH	(120)	(225)	(330)	(400)



OCA(H)		A	B	C	D					
Straight-in Approach	LNAV	2.5%*	205(105)	205(105)	210(115)	220(125)				
		2.6%*			205(105)					
		2.7%*				205(105)				
Circling		250(150)	330(230)	510(410)	510(410)					
GROUND SPEED	km/h	150	180	210	240	270	300	330	360	390
RATE OF DESCENT	m/s	2.2	2.6	3.0	3.5	3.9	4.3	4.8	5.2	5.6

**TRANSITION LEVEL:**  
 - FL050 when QFE is 751mm mercury column or above;  
 - FL060 when QFE is 724mm mercury column or above but less than 751mm mercury column;  
 - FL070 when QFE is less than 724mm mercury column.

**WARNING**  
 MAPt at EE064. Timing not authorized for defining MAPt.

\*MNM climb gradient for missed APCH.