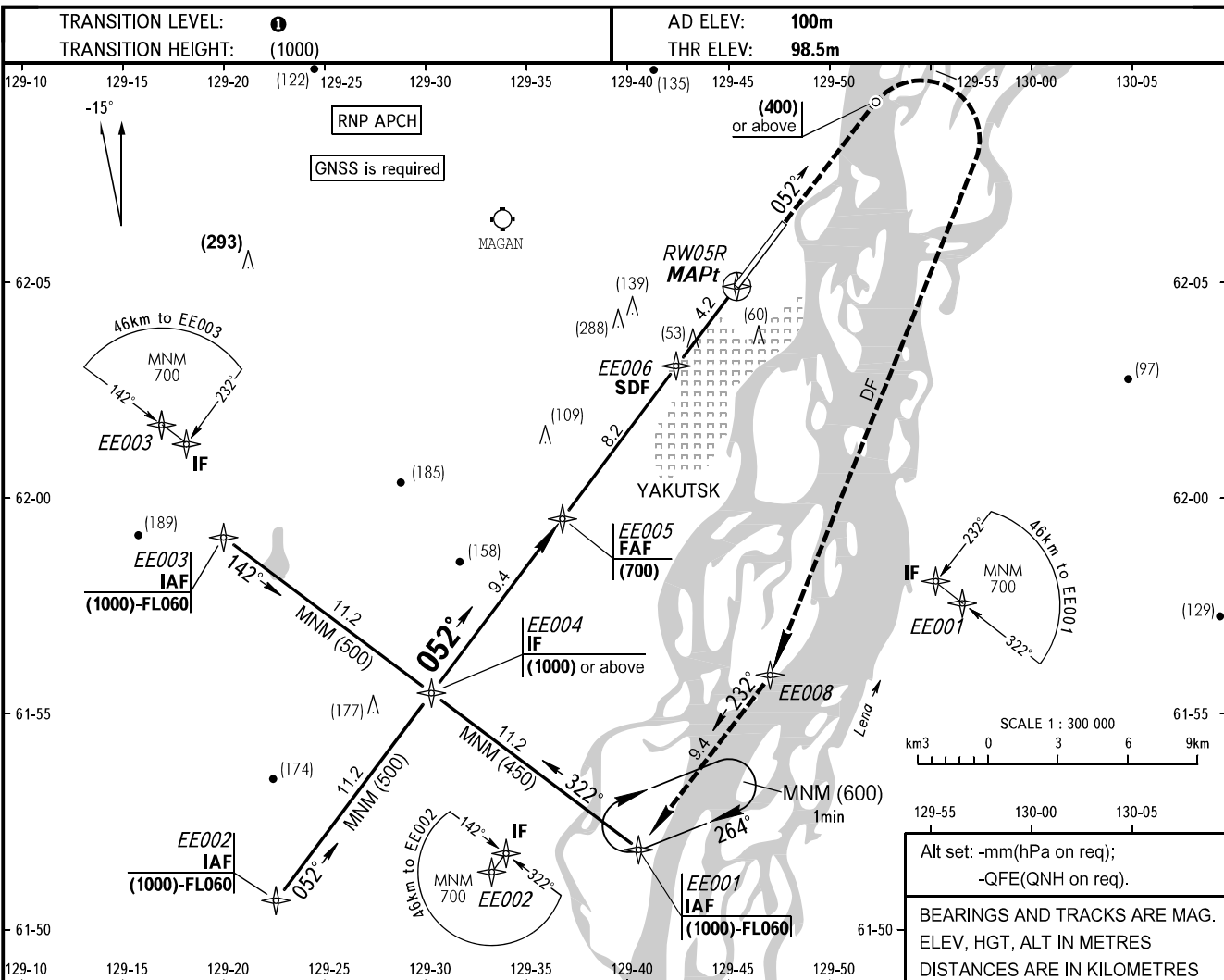


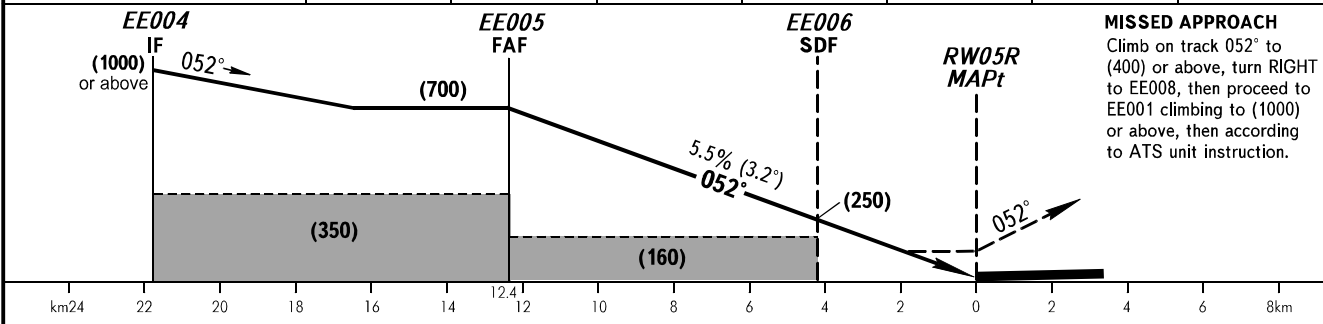
**INSTRUMENT
APPROACH
CHART - ICAO**

APPROACH	129.300
RADAR	120.300
TOWER	120.000

YAKUTSK, RUSSIA
YAKUTSK
RNAV (GNSS) RWY 05R



DIST TO RWY05R	12.4	12.0	10.0	8.0	6.0	4.0	2.0
HGT 3.2° APCH	(700)	(675)	(565)	(455)	(345)	(235)	(125)



MISSED APPROACH
Climb on track 052° to (400) or above, turn RIGHT to EE008, then proceed to EE001 climbing to (1000) or above, then according to ATS unit instruction.

OCA(H)		A	B	C	D
Straight-in Approach	LNAV	230(130)	230(130)	230(130)	230(130)
Circling		250(150)	330(230)	510(410)	510(410)

- TRANSITION LEVEL:**
- FL050 when QFE is 751mm mercury column or above;
 - FL060 when QFE is 724mm mercury column or above but less than 751mm mercury column;
 - FL070 when QFE is less than 724mm mercury column.

WARNING
MAPt at RW05R. Timing not authorized for defining MAPt.

GROUND SPEED	km/h	150	180	210	240	270	300	330	360	390
RATE OF DESCENT	m/s	2.3	2.8	3.2	3.7	4.1	4.6	5.0	5.5	6.0

CHANGE: New chart