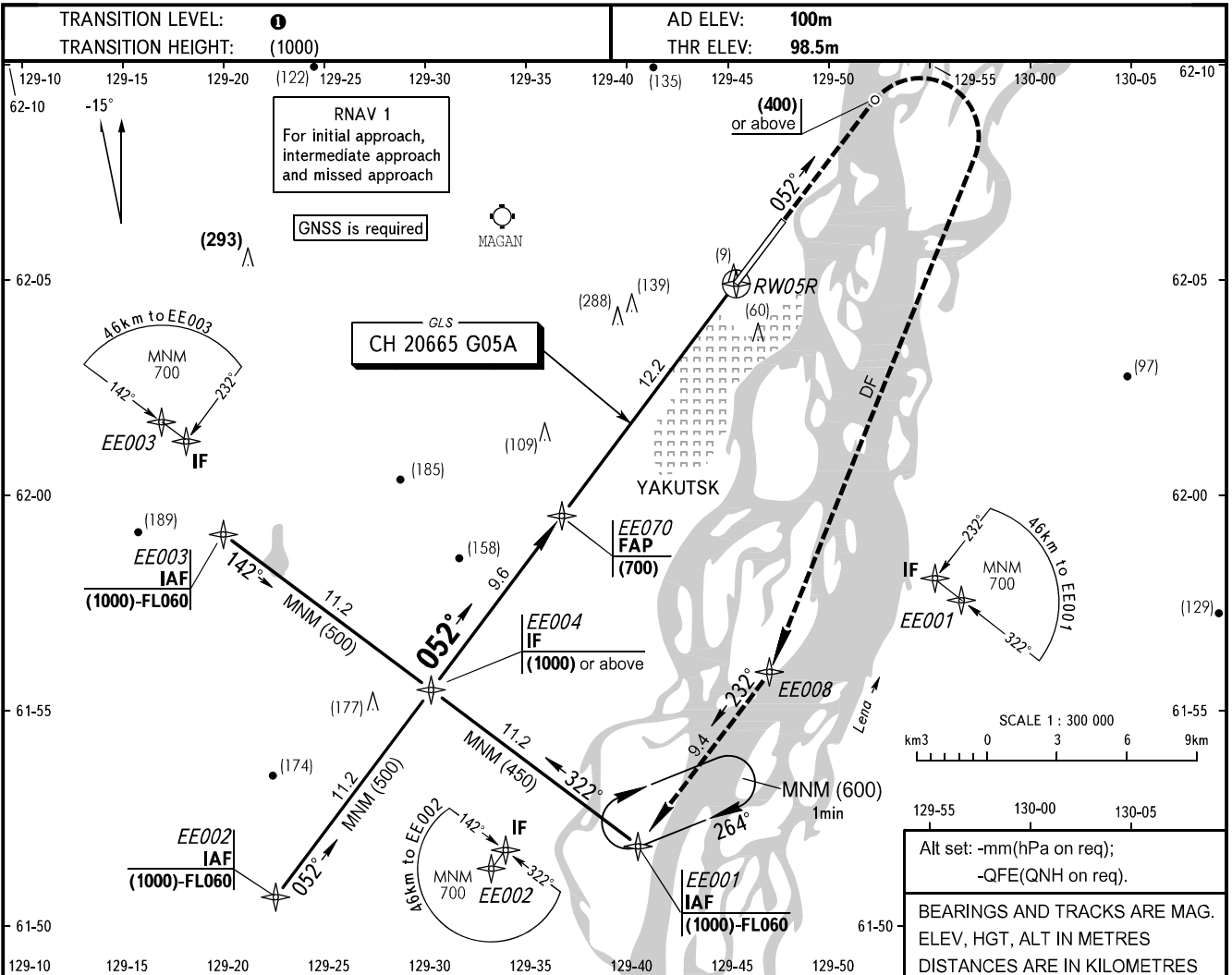


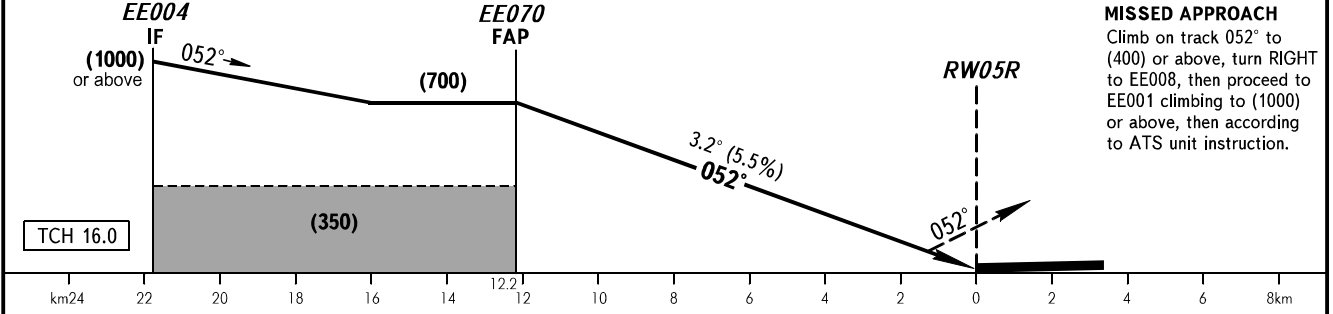
**INSTRUMENT
APPROACH
CHART - ICAO**

APPROACH	129.300
RADAR	120.300
TOWER	120.000

YAKUTSK, RUSSIA
YAKUTSK
GLS RWY 05R CAT I



DIST TO RWY05R	12.2	12.0	10.0	8.0	6.0	4.0	2.0
HGT 3.2° APCH	(700)	(688)	(576)	(464)	(352)	(238)	(128)



OCA(H)		A	B	C	D
Straight-in Approach	CAT I	148(49)	151(52)	154(55)	157(58)
Circling		250(150)	330(230)	510(410)	510(410)

TRANSITION LEVEL:

- FL050 when QFE is 751mm mercury column or above;
- FL060 when QFE is 724mm mercury column or above but less than 751mm mercury column;
- FL070 when QFE is less than 724mm mercury column.

WARNING
Turn before RW05R is PROHIBITED.

GROUND SPEED	km/h	150	180	210	240	270	300	330	360	390
RATE OF DESCENT	m/s	2.3	2.8	3.2	3.7	4.1	4.6	5.0	5.5	6.0

CHANGE: New chart