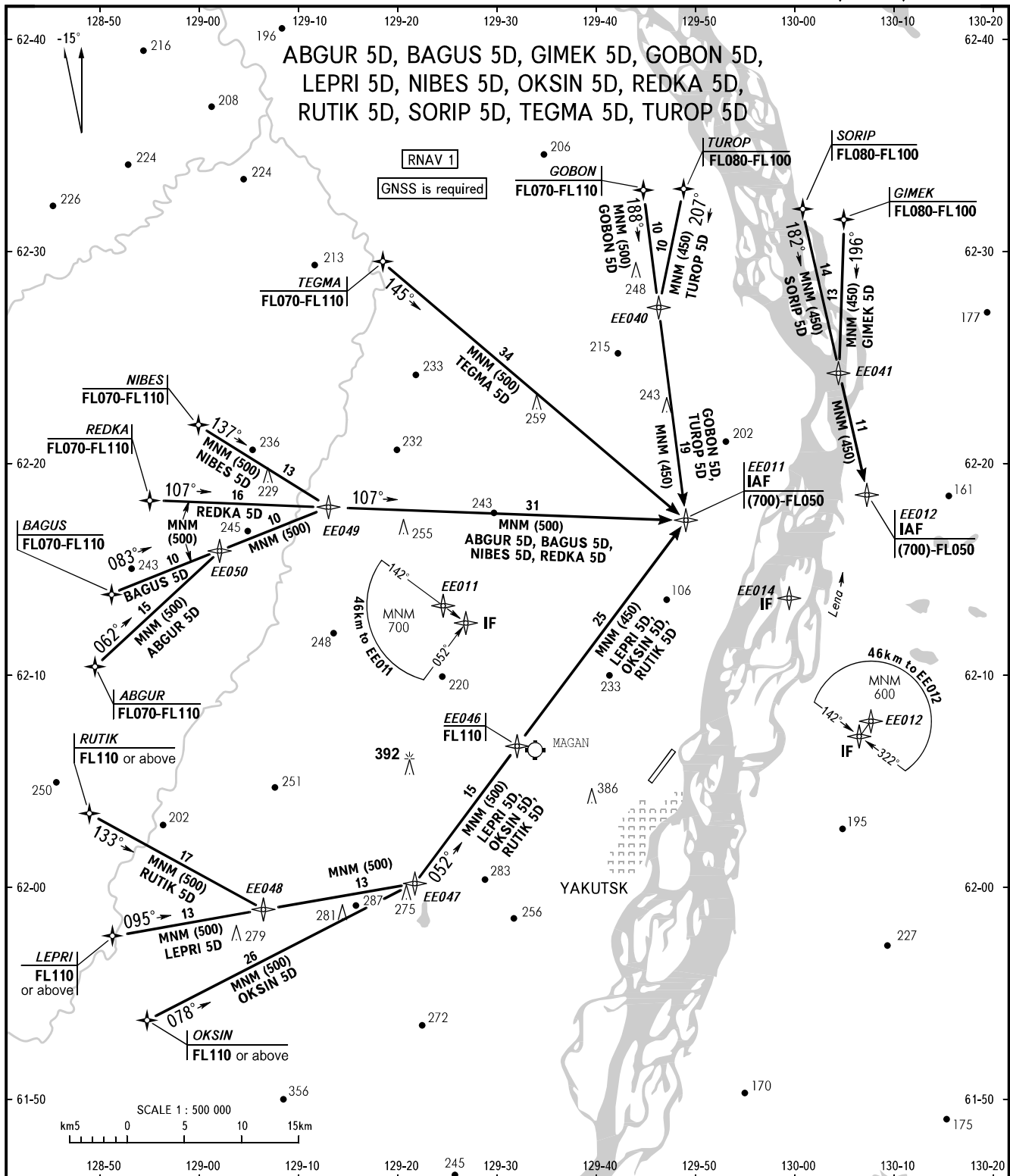


STANDARD ARRIVAL CHART
INSTRUMENT (STAR) - ICAO

YAKUTSK, RUSSIA
YAKUTSK
RNAV (GNSS) RWY 23L

TRANSITION
LEVEL: **1**



APPROACH RADAR 129.300
120.300

1 TRANSITION LEVEL:
 - FL050 when QFE is 751mm mercury column or above;
 - FL060 when QFE is 724mm mercury column or above but less than 751mm mercury column;
 - FL070 when QFE is less than 724mm mercury column.

BEARINGS AND TRACKS ARE MAGNETIC
 ALTITUDES, HEIGHTS AND ELEVATIONS ARE IN METRES
 DISTANCES ARE IN KILOMETRES