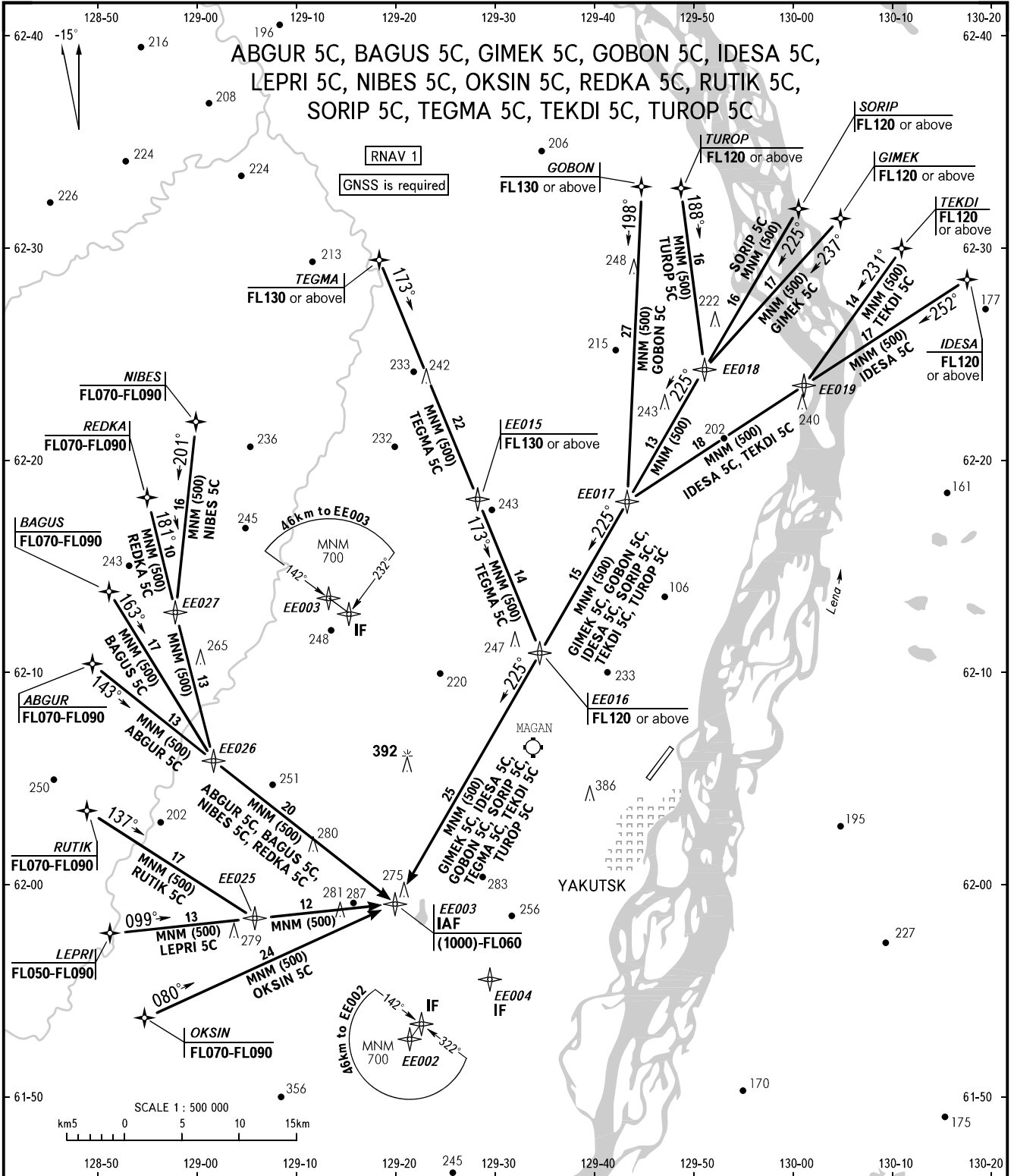


STANDARD ARRIVAL CHART
INSTRUMENT (STAR) - ICAO

YAKUTSK, RUSSIA
YAKUTSK
RNAV (GNSS) RWY 05R

TRANSITION
LEVEL : **1**



APPROACH 129.300
RADAR 120.300

- 1** TRANSITION LEVEL:
- FL050 when QFE is 751mm mercury column or above;
 - FL060 when QFE is 724mm mercury column or above but less than 751mm mercury column;
 - FL070 when QFE is less than 724mm mercury column.

BEARINGS AND TRACKS ARE MAGNETIC
ALTITUDES, HEIGHTS AND ELEVATIONS ARE IN METRES
DISTANCES ARE IN KILOMETRES

CHANGE: New chart