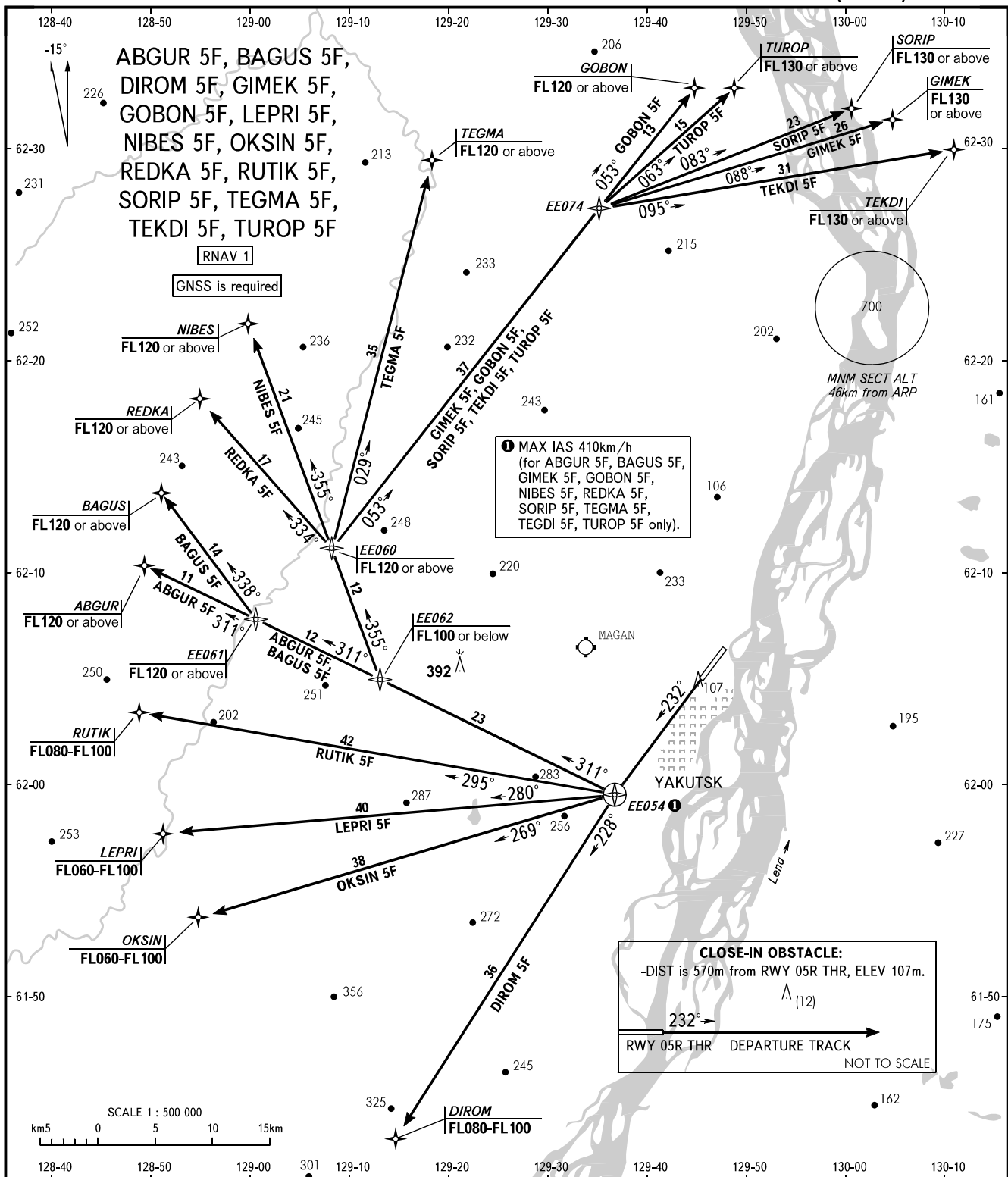


STANDARD DEPARTURE CHART
INSTRUMENT (SID) - ICAO

TRANSITION
HEIGHT : (1000)

YAKUTSK, RUSSIA
YAKUTSK
RNAV (GNSS) RWY 23L



TOWER 120.000
RADAR 120.300
APPROACH 129.300

- WARNING:**
- The minimum climb gradients are as follows (required due to the airspace limitation):
 - 3.4% up to FL060 for SID LEPRI 5F;
 - 3.5% up to FL060 for SID OKSIN 5F;
 - 4.3% up to FL080 for SID RUTIK 5F;
 - 4.9% up to FL080 for SID DIROM 5F,
 - 7.2% up to FL120 for SID ABGUR 5F, BAGUS 5F, GIMEK 5F, GOBON 5F, NIBES 5F, REDKA 5F, SORIP 5F, TEGMA 5F, TEKDI 5F, TUROP 5F
 - There is a close-in obstacle.

BEARINGS AND TRACKS ARE MAGNETIC
ALTITUDES, HEIGHTS AND ELEVATIONS ARE IN METRES
DISTANCES ARE IN KILOMETRES