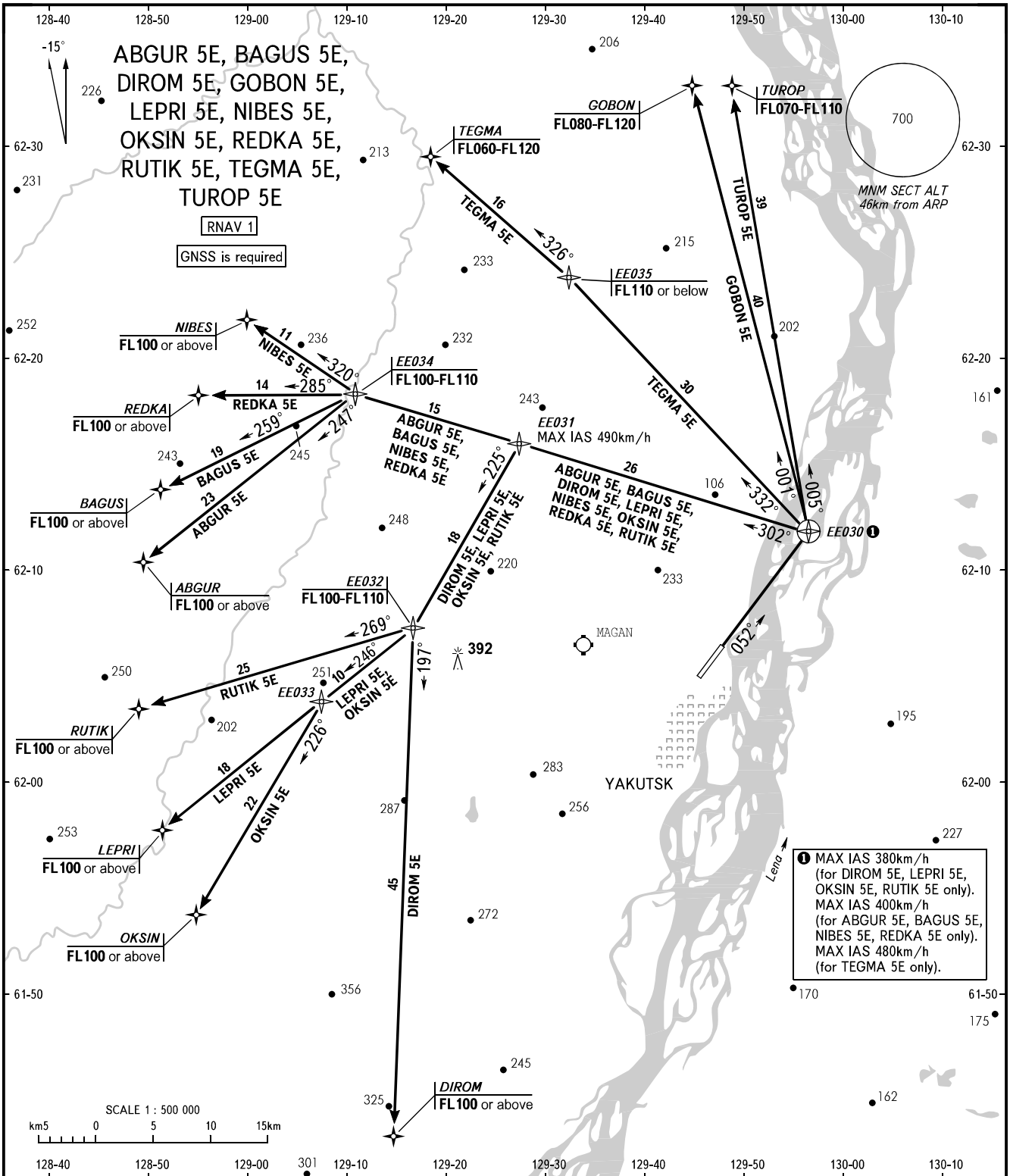


STANDARD DEPARTURE CHART
INSTRUMENT (SID) - ICAO

TRANSITION
HEIGHT : (1000)

YAKUTSK, RUSSIA
YAKUTSK
RNAV (GNSS) RWY 05R



① MAX IAS 380km/h
(for DIROM 5E, LEPRI 5E,
OKSIN 5E, RUTIK 5E only).
MAX IAS 400km/h
(for ABGUR 5E, BAGUS 5E,
NIBES 5E, REDKA 5E only).
MAX IAS 480km/h
(for TEGMA 5E only).

TOWER 120.000
RADAR 120.300
APPROACH 129.300

WARNING

The minimum climb gradients are as follows
(required due to the airspace limitation):
- 4.0% up to FL070 for SID TUROP 5E;
- 4.5% up to FL080 for SID GOBON 5E;
- 4.9% up to FL100 for SID ABGUR 5E,
BAGUS 5E, DIROM 5E, LEPRI 5E,
NIBES 5E, OKSIN 5E, REDKA 5E,
RUTIK 5E.

BEARINGS AND TRACKS ARE MAGNETIC
ALTITUDES, HEIGHTS AND ELEVATIONS ARE IN METRES
DISTANCES ARE IN KILOMETRES

CHANGE: New chart