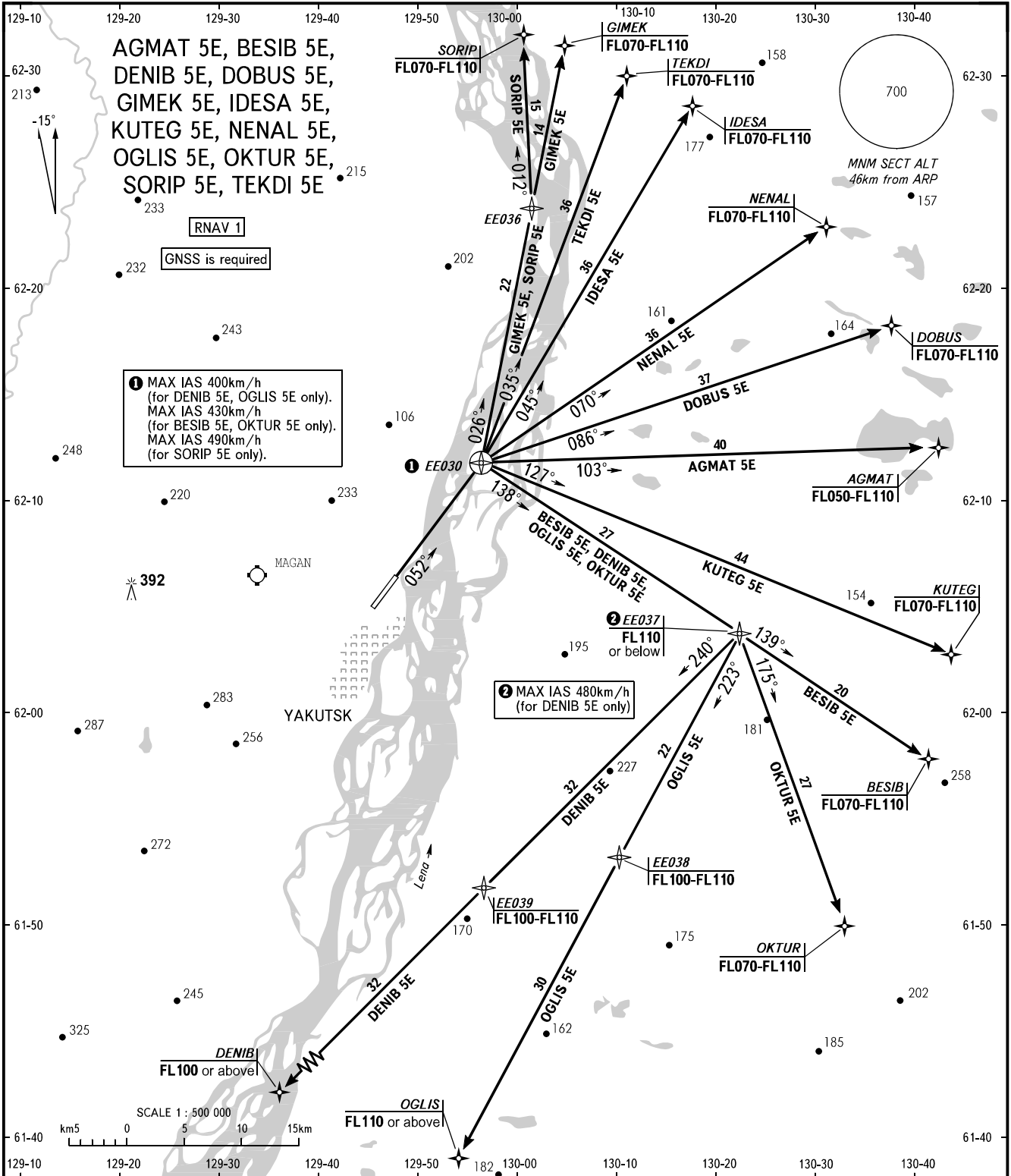


STANDARD DEPARTURE CHART  
INSTRUMENT (SID) - ICAO

TRANSITION  
HEIGHT : (1000)

YAKUTSK, RUSSIA  
YAKUTSK  
RNAV (GNSS) RWY 05R



TOWER 120.000  
RADAR 120.300  
APPROACH 129.300

**WARNING**  
The minimum climb gradients are as follows (required due to the airspace limitation):  
- 3.5% up to FL070 for SID KUTEG 5E;  
- 4.2% up to FL100 for SID DENIB 5E;  
- 4.3% up to FL070 for SID DOBUS 5E, GIMEK 5E, IDESA 5E, NENAL 5E, SORIP 5E, TEKDI 5E;  
- 4.7% up to FL100 for SID OGLIS 5E.

BEARINGS AND TRACKS ARE MAGNETIC  
ALTITUDES, HEIGHTS AND ELEVATIONS ARE IN METRES  
DISTANCES ARE IN KILOMETRES

CHANGE: New chart