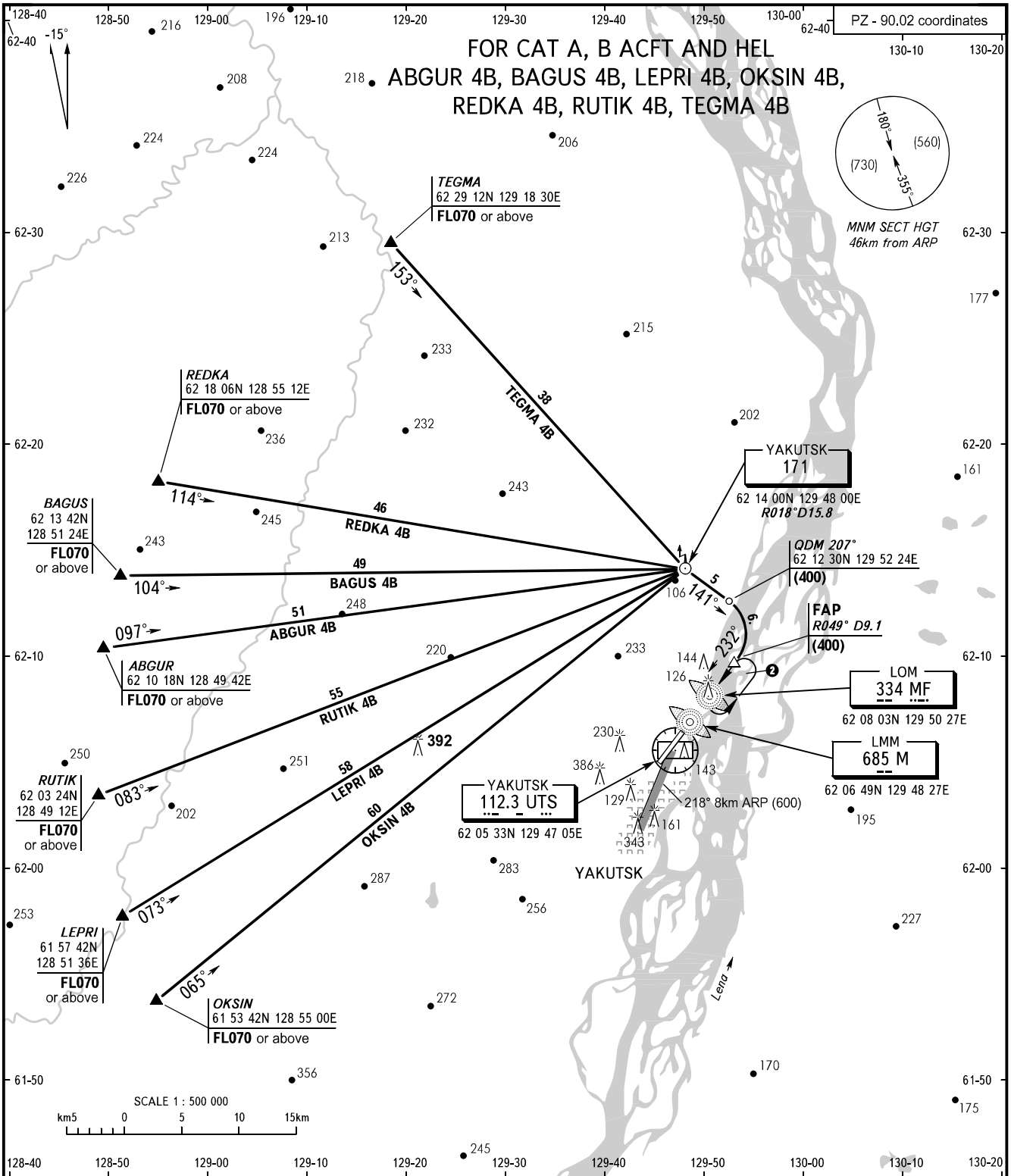


STANDARD ARRIVAL CHART  
INSTRUMENT (STAR) - ICAO

YAKUTSK, RUSSIA  
YAKUTSK  
RWY 23L

TRANSITION  
LEVEL : ①



APPROACH 129.300  
KRUG 120.300

**WARNING**

When continuous radar control is not provided and onboard navigation facilities operate unsteadily (by crew's report) ACFT shall proceed to LMM with subsequent descent and approach in accordance with this chart.

BEARINGS AND TRACKS ARE MAGNETIC  
ALTITUDES, HEIGHTS AND ELEVATIONS ARE IN METRES  
DISTANCES ARE IN KILOMETRES

① TRANSITION LEVEL:

- FL050 when atmospheric pressure is 751mm mercury column or above.
- FL060 when atmospheric pressure is below 751mm mercury column.

② HOLDING PATTERN:

- all turns LEFT with bank 25°.
- time to fly - 2min.
- IAS for ACFT: CAT A - 240km/h, CAT B - 320km/h.
- altitudes and heights are by ATC, but not lower than MNM SECT HGT.

CHANGE: VORDME name