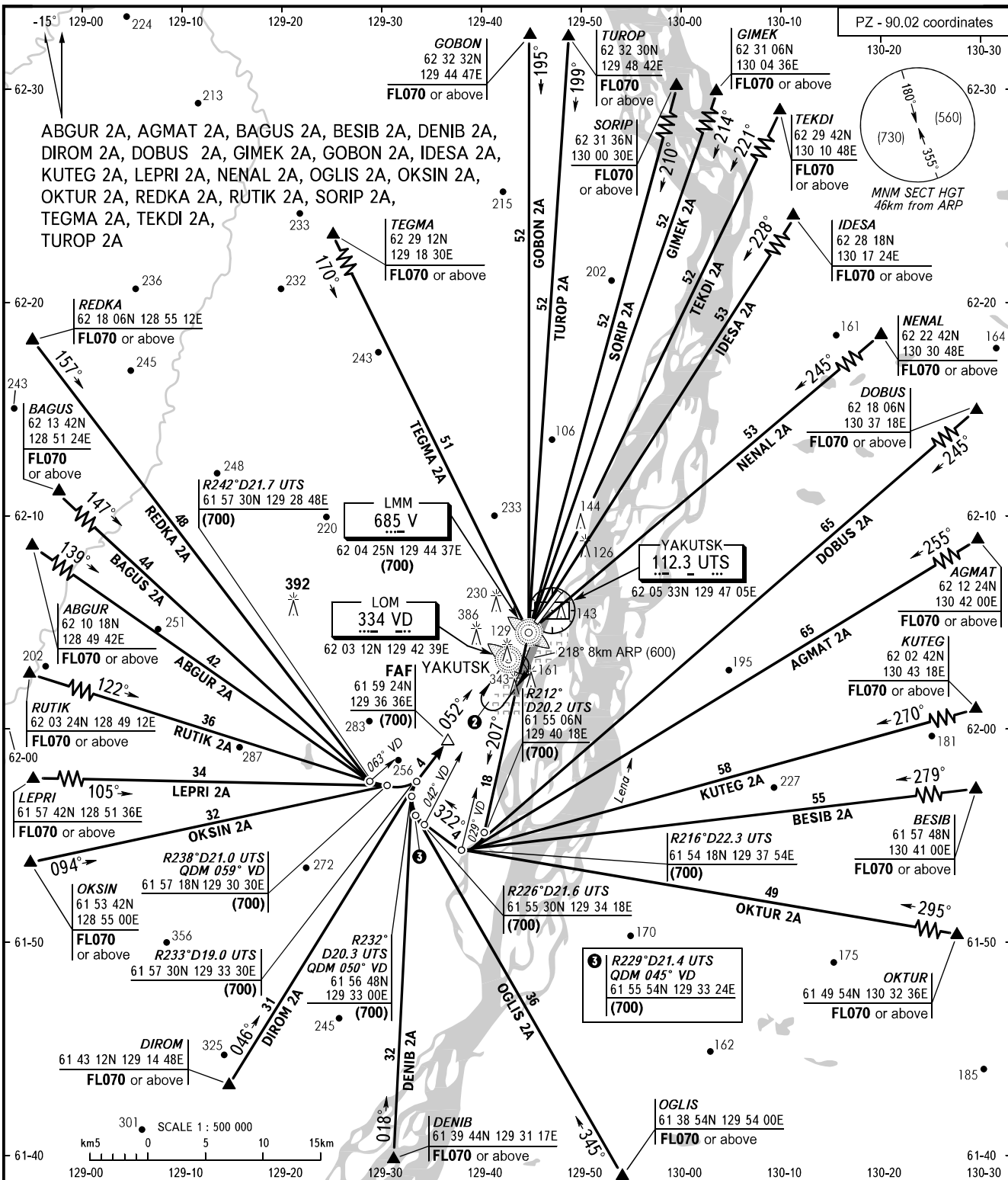


STANDARD ARRIVAL CHART
INSTRUMENT (STAR) - ICAO

YAKUTSK, RUSSIA
YAKUTSK
RWY 05R

TRANSITION
LEVEL : 1



APPROACH **129.300**
KRUG **120.300**

WARNING

When continuous radar control is not provided and airborne navigation facilities operate unsteadily (by crew's report) ACFT shall proceed to LMM with subsequent descent and approach in accordance with this chart.

BEARINGS AND TRACKS ARE MAGNETIC
ALTITUDES, HEIGHTS AND ELEVATIONS ARE IN METRES
DISTANCES ARE IN KILOMETRES

1 TRANSITION LEVEL:

- FL050 when atmospheric pressure is 751mm mercury column or above.
- FL060 when atmospheric pressure is below 751mm mercury column.

2 HOLDING PATTERN:

- all turns RIGHT with bank 25°.
- time to fly - 3min.
- IAS for ACFT: CAT A - 240km/h, CAT B - 320km/h, CAT C, D - 500km/h.
- altitudes and heights are by ATC, but not lower than MNM SECT HGT.

CHANGE: NIL