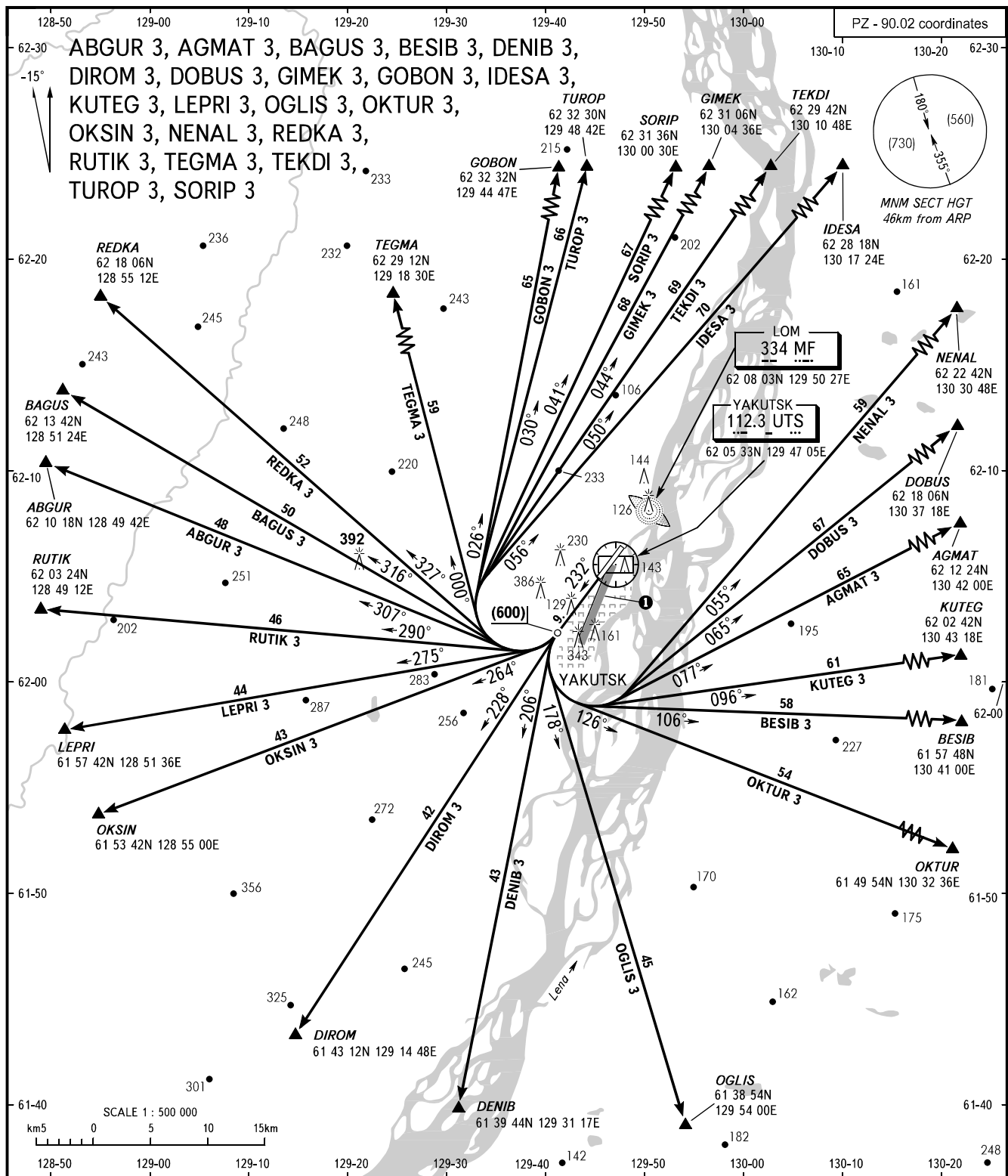


STANDARD DEPARTURE CHART
INSTRUMENT (SID) - ICAO

TRANSITION
HEIGHT : (1000)

YAKUTSK, RUSSIA
YAKUTSK
RWY 23L



START 120.000
KRUG 120.300
APPROACH 129.300

- ① 218° 8km ARP (600)
- WARNING:**
- Altitudes of crossing the airway entry points are by ATC instructions.
 - RIGHT turn shall be carried out under ATC control due to crossing MAGAN AERODROME area.
 - Take-off of ACFT between 1400-2100 shall be executed in accordance with noise abatement procedures as set in Aeroplane Flight Manual or NADP-1 and NADP-2 (ICAO Doc 8168).
 - ACFT shall turn LEFT and proceed to CRP TEGMA, REDKA, BAGUS, ABGUR, RUTIK, LEPRI, OKSIN by ATC instruction.

BEARINGS AND TRACKS ARE MAGNETIC
ALTITUDES, HEIGHTS AND ELEVATIONS ARE IN METRES
DISTANCES ARE IN KILOMETRES