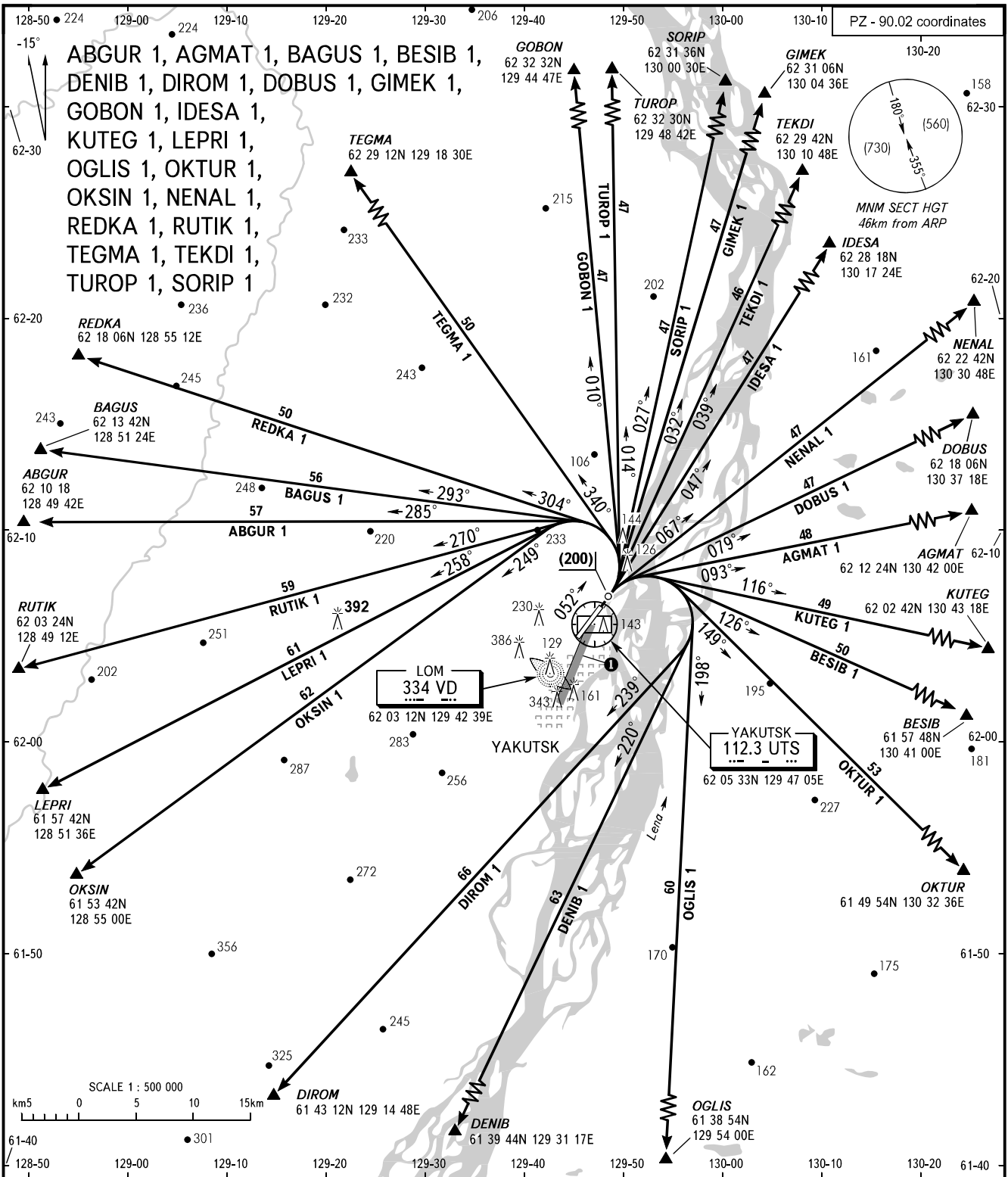


STANDARD DEPARTURE CHART
INSTRUMENT (SID) - ICAO

TRANSITION
HEIGHT : (1000)

YAKUTSK, RUSSIA
YAKUTSK
RWY 05R



START	120.000
KRUG	120.300
APPROACH	129.300

① 218° 8km ARP (600)

WARNING:

1. Altitudes of crossing the airway entry points are by ATC instructions.
2. LEFT turn shall be carried out under ATC control due to crossing MAGAN AERODROME area.
3. ACFT shall turn RIGHT and proceed to CRP IDESA, TEGMA, REDKA, BAGUS, ABGUR, RUTIK, LEPRI, OKSIN, by ATC instruction.

BEARINGS AND TRACKS ARE MAGNETIC
ALTITUDES, HEIGHTS AND ELEVATIONS ARE IN METRES
DISTANCES ARE IN KILOMETRES

CHANGE: New chart