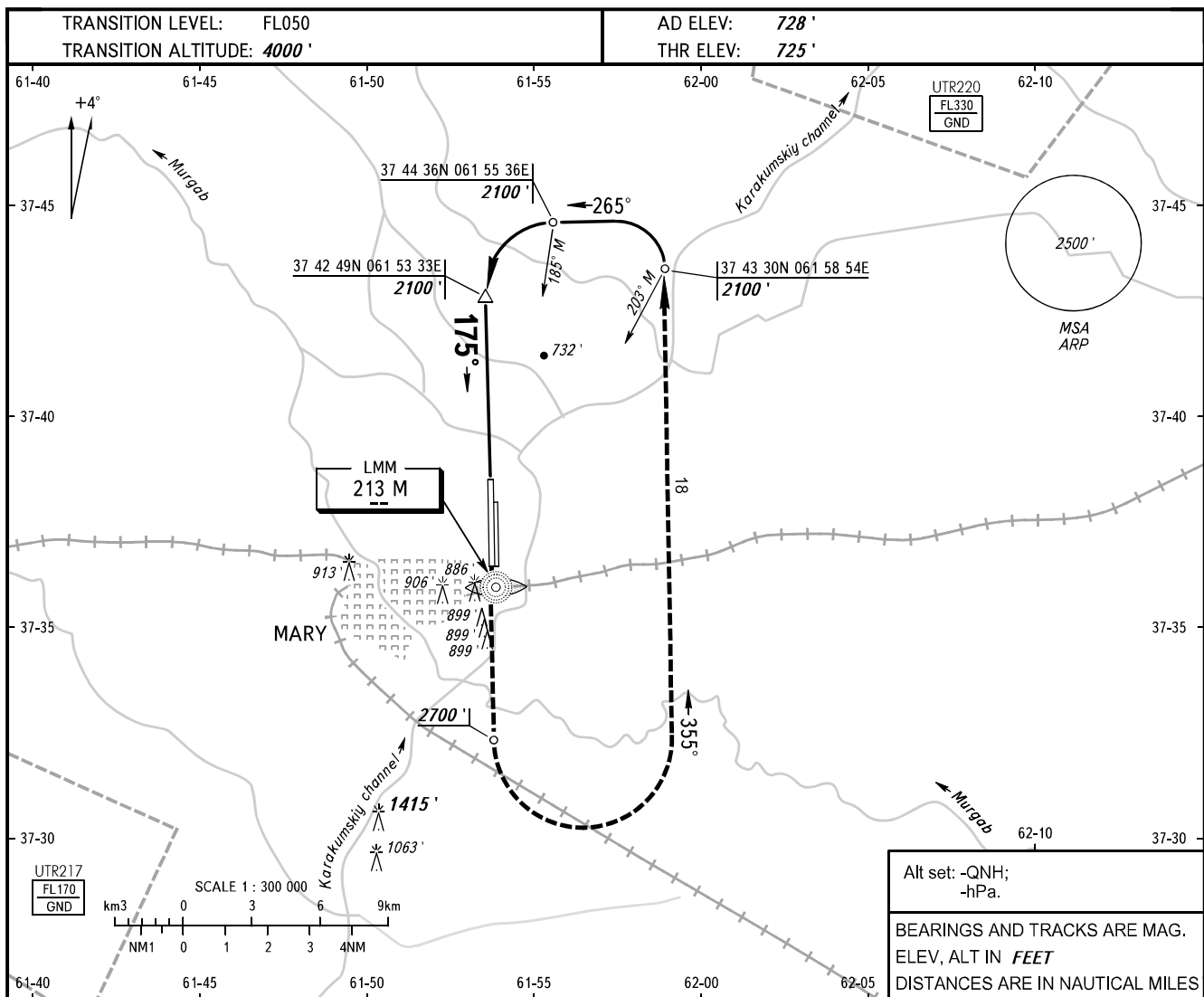


**INSTRUMENT
APPROACH
CHART - ICAO**

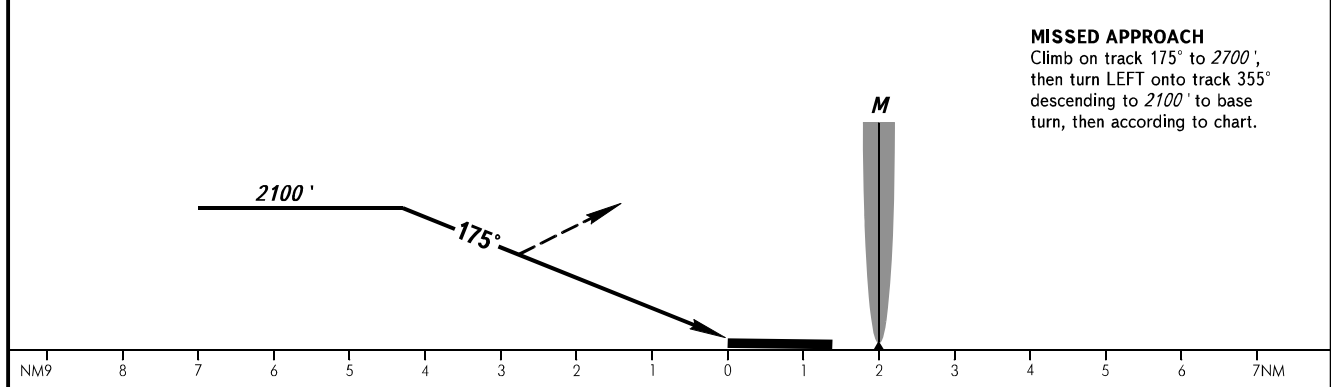
RADAR	124.000
TOWER	122.200
METEO	128.300

MARY, TURKMENISTAN
MARY
NDB RWY 18R



Alt set: -QNH;
-hPa.

BEARINGS AND TRACKS ARE MAG.
ELEV, ALT IN FEET
DISTANCES ARE IN NAUTICAL MILES



MISSED APPROACH
Climb on track 175° to 2700';
then turn LEFT onto track 355°
descending to 2100' to base
turn, then according to chart.

OCA(H)		A	B	C	D							
Straight-in Approach		1390' (660')	1390' (660')	1730' (1000')	1730' (1000')							
GROUND SPEED		KT	70	90	100	120	140	160				
RATE OF DESCENT		ft/min	372	478	531	637	743	849				