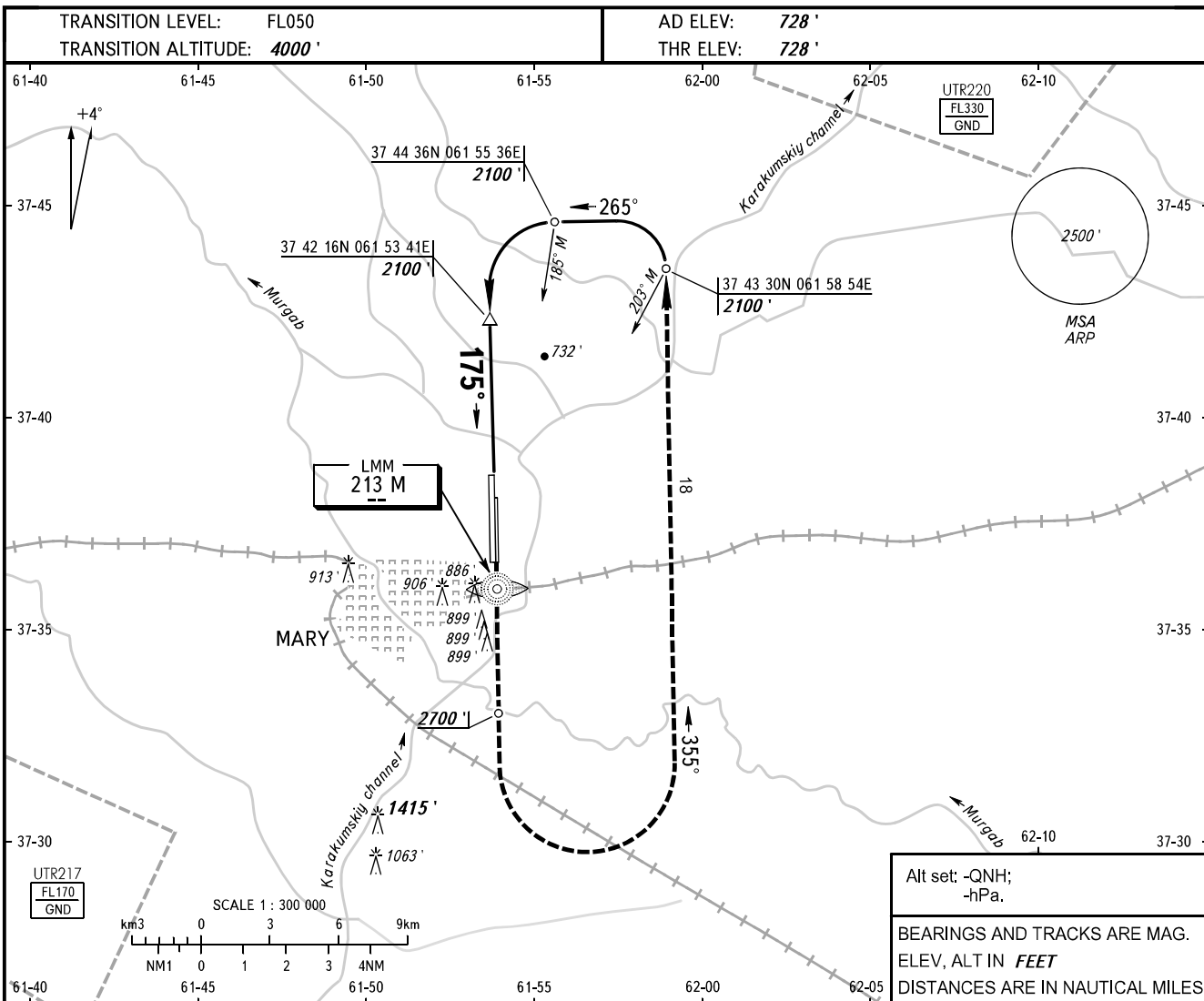


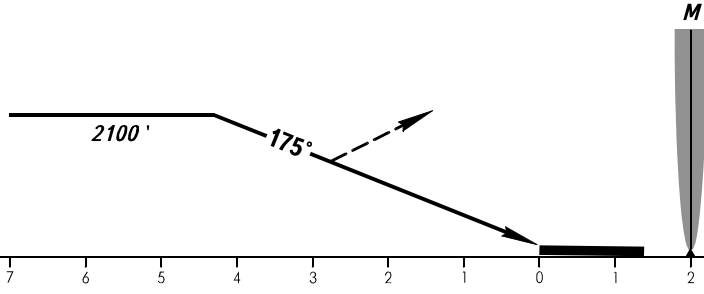
**INSTRUMENT  
APPROACH  
CHART - ICAO**

RADAR	124.000
TOWER	122.200
METEO	128.300

**MARY, TURKMENISTAN**  
MARY  
NDB RWY 18L



**MISSED APPROACH**  
Climb on track 175° to 2700'; then turn LEFT onto track 355° descending to 2100' to base turn, then according to chart.



OCA(H)		A	B	C	D										
Straight-in	Approach	1390' (660')	1390' (660')	1730' (1000')	1730' (1000')										
GROUND SPEED		KT	70	90	100	120	140	160							
RATE OF DESCENT		ft/min	372	478	531	637	743	849							

CHANGE: METEO