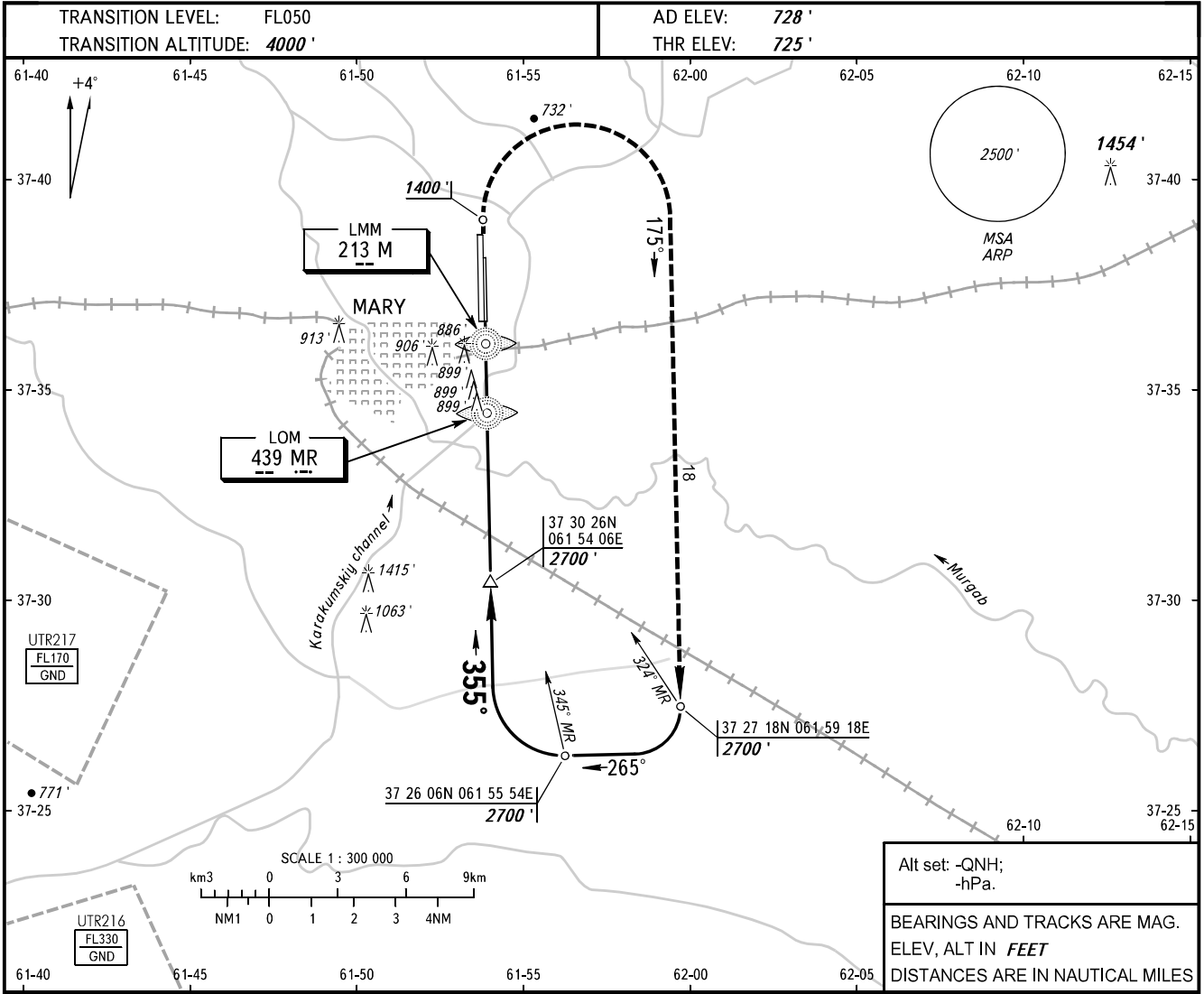


**INSTRUMENT  
APPROACH  
CHART - ICAO**

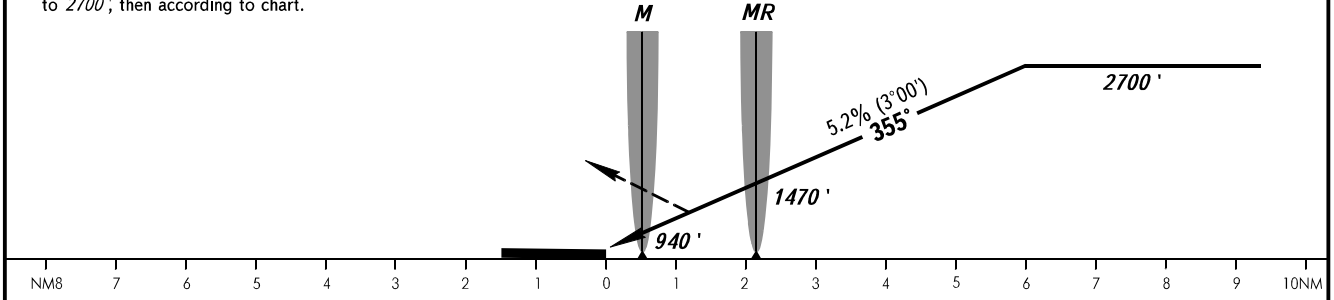
RADAR	124.000
TOWER	122.200
METEO	128.300

**MARY, TURKMENISTAN**  
MARY  
2 NDB RWY 36R



**MISSED APPROACH**

Climb on track 355° to 1400', then turn RIGHT onto track 175° climbing to 2700', then according to chart.



OCA(H)		A	B	C	D							
Straight-in	2 NDB	1160' (430')	1160' (430')	1160' (430')	1160' (430')							
	NDB (LOM)	1390' (660')	1390' (660')	1730' (1000')	1730' (1000')							
Approach												
GROUND SPEED		KT	70	90	100	120	140	160				
RATE OF DESCENT		ft/min	372	478	531	637	743	849				

CHANGE: METEO