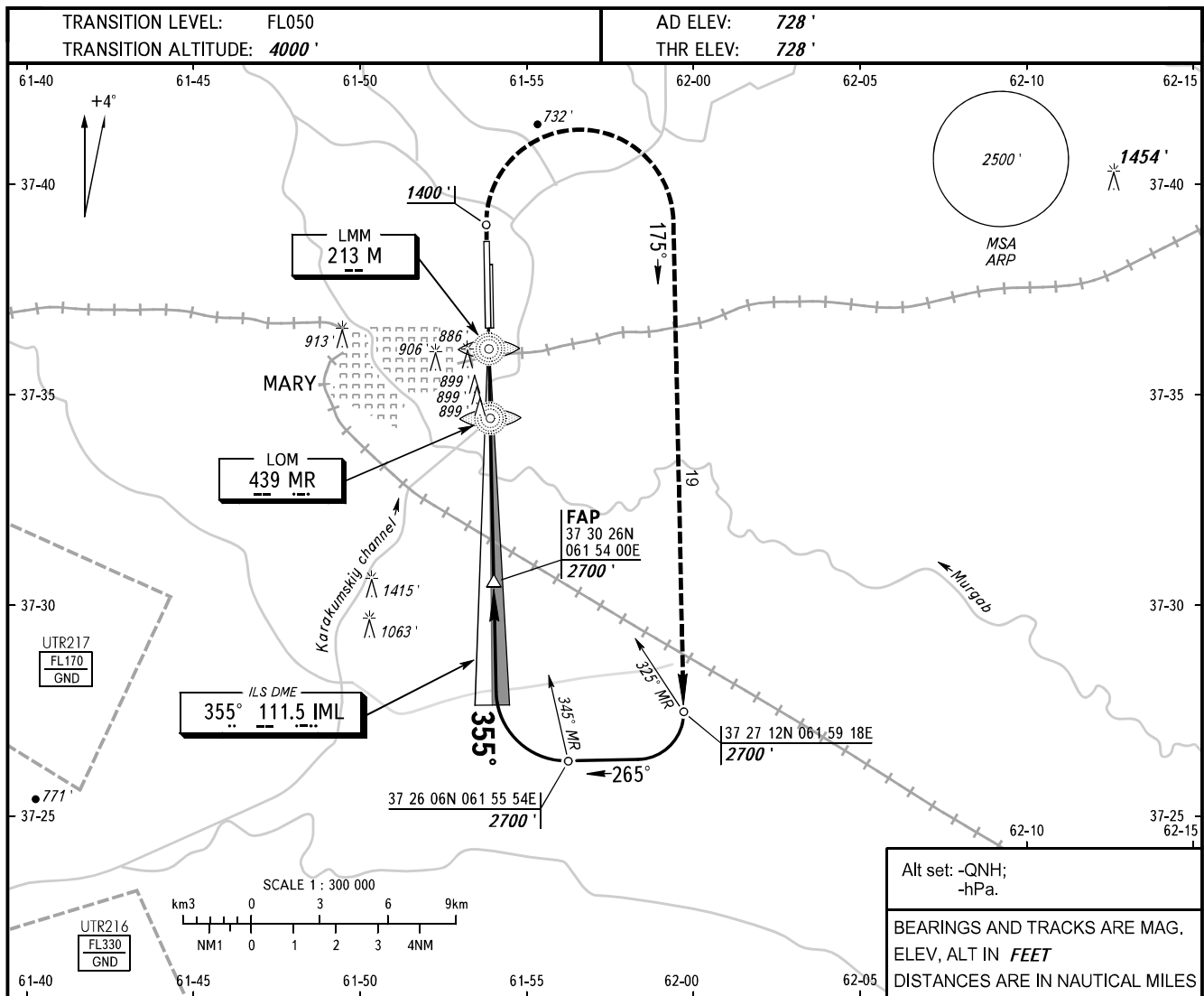


**INSTRUMENT
APPROACH
CHART - ICAO**

RADAR	124.000
TOWER	122.200
METEO	128.300

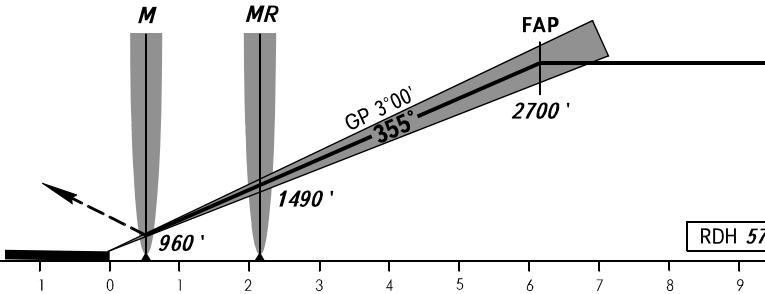
MARY, TURKMENISTAN
MARY
ILS RWY 36L



Alt set: -QNH;
-hPa.

BEARINGS AND TRACKS ARE MAG.
ELEV, ALT IN FEET
DISTANCES ARE IN NAUTICAL MILES

MISSED APPROACH
Climb on track 355° to 1400', then turn RIGHT onto track 175° climbing to 2700'; then according to chart.



OCA(H)		A	B	C	D							
Straight-in Approach		930' (200')	930' (200')	960' (230')	960' (230')							
GROUND SPEED	KT		70	90	100	120	140	160				
RATE OF DESCENT	ft/min		372	478	531	637	743	849				