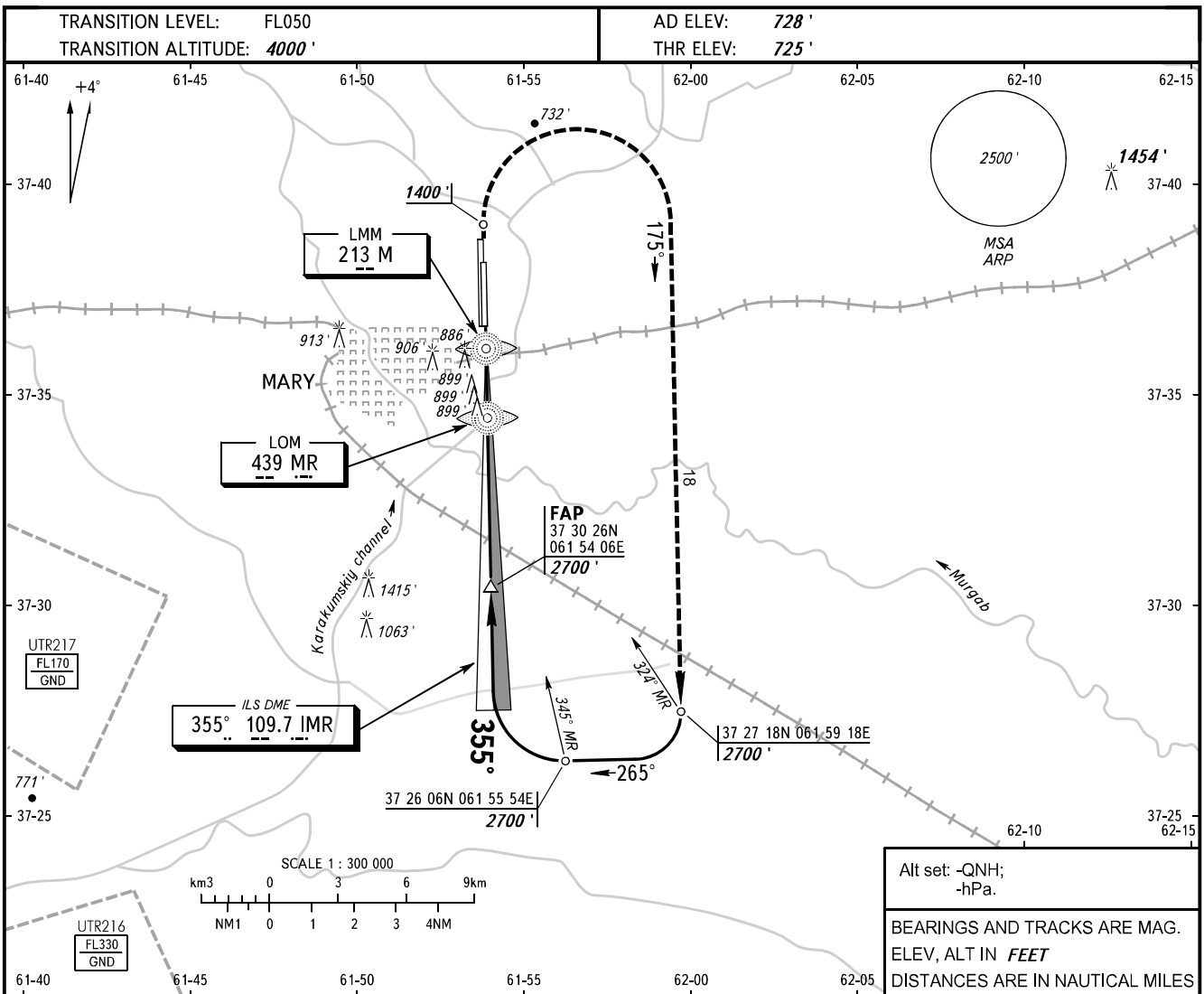


**INSTRUMENT  
APPROACH  
CHART - ICAO**

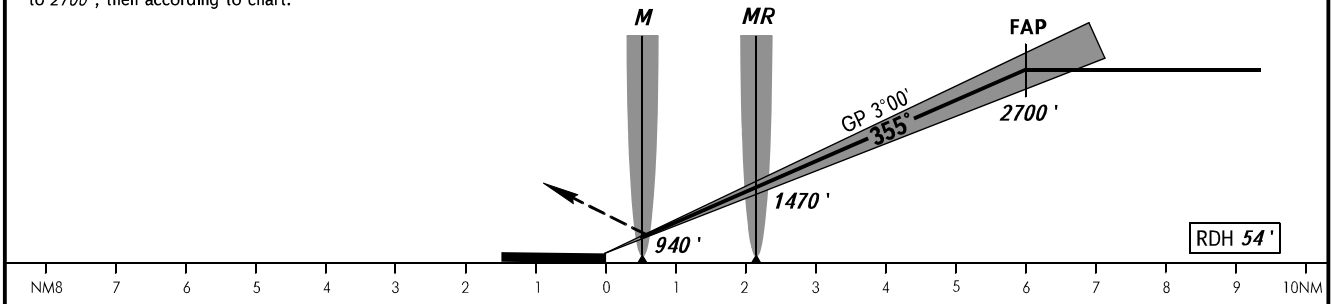
RADAR	124.000
TOWER	122.200
METEO	128.300

**MARY, TURKMENISTAN**  
MARY  
ILS RWY 36R



**MISSED APPROACH**

Climb on track 355° to 1400', then turn RIGHT onto track 175° climbing to 2700', then according to chart.



OCA(H)		A	B	C	D							
Straight-in Approach		925' (200')	925' (200')	955' (230')	955' (230')							
GROUND SPEED		KT	70	90	100	120	140	160				
RATE OF DESCENT		ft/min	372	478	531	637	743	849				