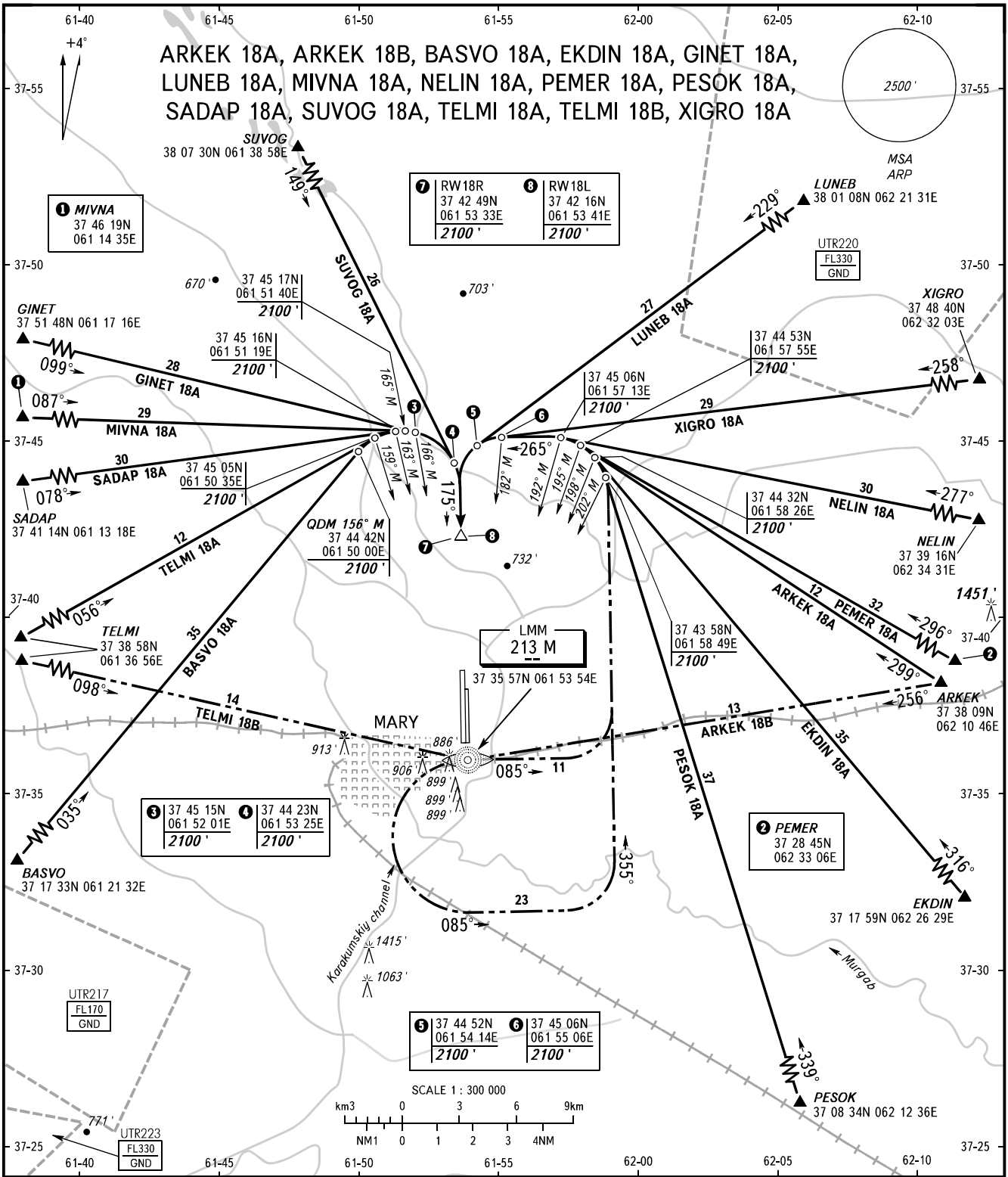


STANDARD ARRIVAL CHART  
INSTRUMENT (STAR) - ICAO

TRANSITION  
LEVEL : **FL050**

MARY, TURKMENISTAN  
MARY  
RWY 18L, 18R



RADAR 124.000  
TOWER 122.200  
METEO 128.300

BEARINGS AND TRACKS ARE MAGNETIC  
ALTITUDES AND ELEVATIONS ARE IN FEET  
DISTANCES ARE IN NAUTICAL MILES

CHANGE: METEO