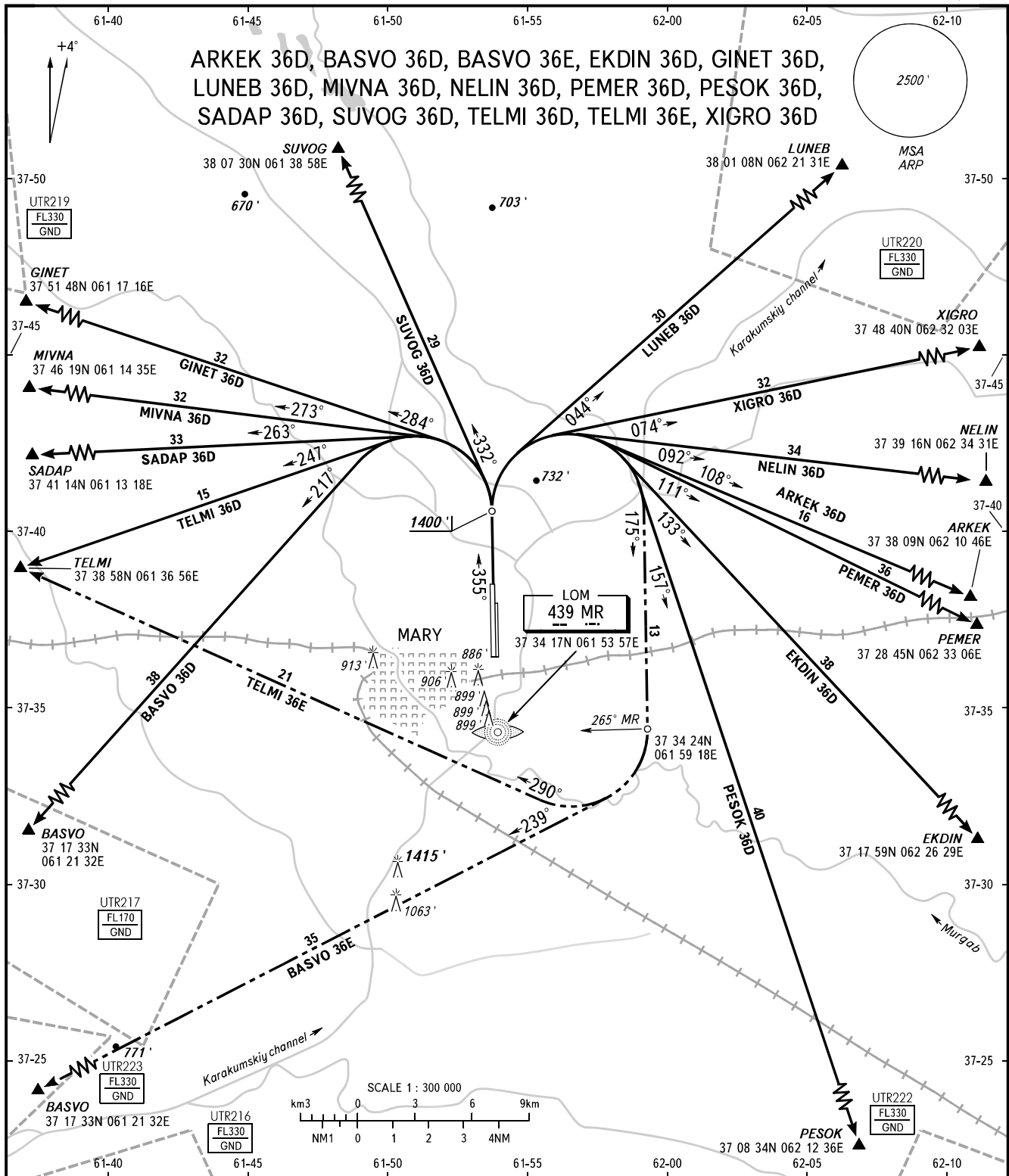


STANDARD DEPARTURE CHART
INSTRUMENT (SID) - ICAO

TRANSITION
ALTITUDE : 4000'

MARY, TURKMENISTAN

MARY
RWY 36L, 36R



TOWER	122.200
RADAR	124.000
METEO	128.300

BEARINGS AND TRACKS ARE MAGNETIC
 ALTITUDES AND ELEVATIONS ARE IN FEET
 DISTANCES ARE IN NAUTICAL MILES