

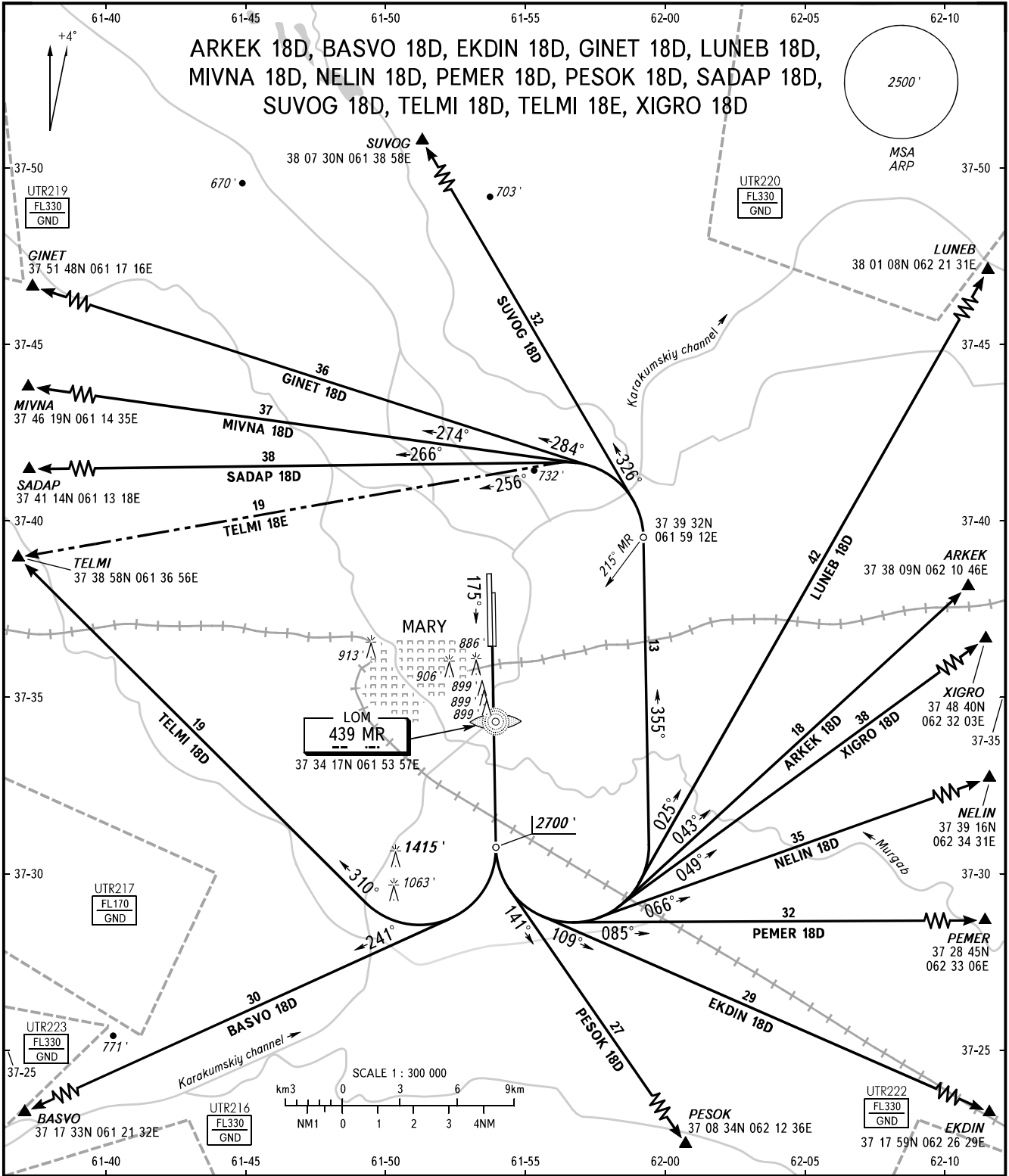
STANDARD DEPARTURE CHART  
INSTRUMENT (SID) - ICAO

TRANSITION  
ALTITUDE: 4000'

MARY, TURKMENISTAN

MARY

RWY 18L, 18R



TOWER	122.200
RADAR	124.000
METEO	128.300

BEARINGS AND TRACKS ARE MAGNETIC  
ALTITUDES AND ELEVATIONS ARE IN FEET  
DISTANCES ARE IN NAUTICAL MILES

CHANGE: METEO